

GEORGE T. DUNHAM  
SURVEYING & SUBDIVIDING  
DELAVER, WISCONSIN

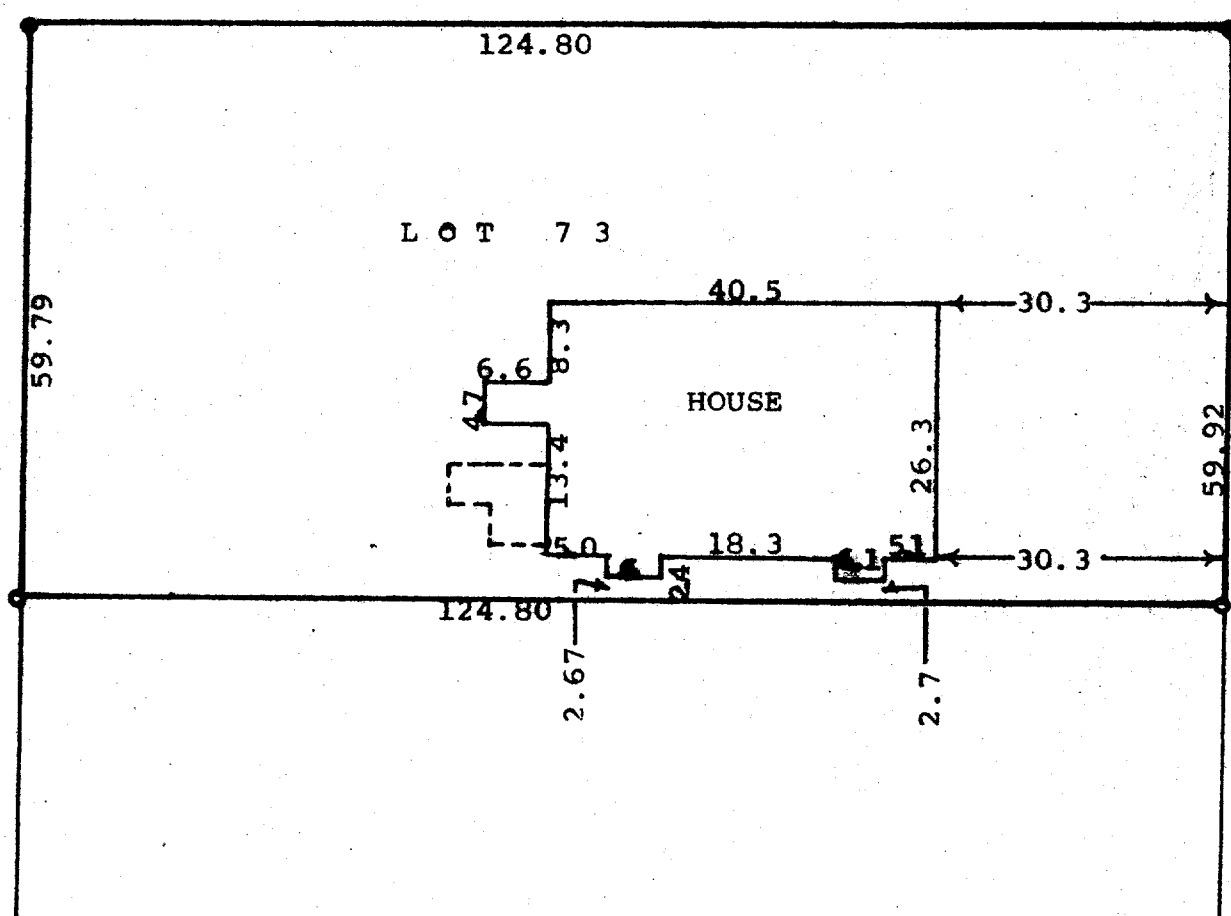
CLEVELAND

PARKWAY

DRIVEWAY

PARKWAY

LINCOLN



Scale - 1" = 20'  
● = Iron pipe  
● = Concrete monument

STATE OF WISCONSIN)  
COUNTY OF WALWORTH) SS

I, George T. Dunham, Surveyor, certify that I have surveyed the property described as follows, Lot 73 of Cedar Point Park, a subdivision located in the Village of Williams Bay, Walworth County, Wisconsin, and that the plat shown above is an accurate survey and a true representation thereof and correctly shows the exterior boundary lines and location of the buildings on said property and the correct measurements thereof.  
May 26, 1972

*George T. Dunham*  
George T. Dunham, Surveyor

