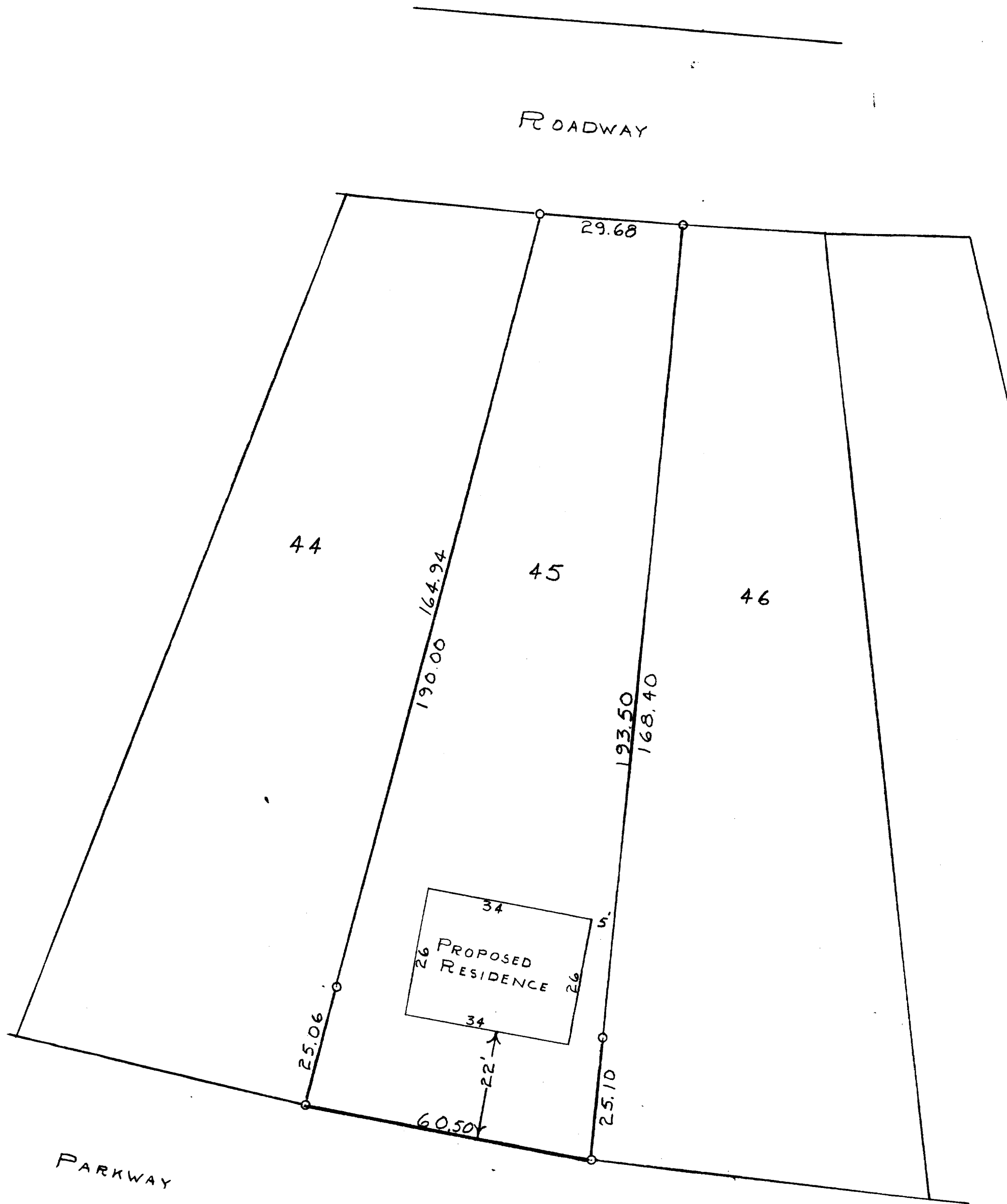


N
 SCALE ~ 1" = 20'
 O = IRON PIPE



PLAT OF SURVEY OF LOT 45, FIRST ADDITION, CEDAR POINT PARK
 SUBDIVISION, VILLAGE OF WILLIAMS BAY, WALWORTH COUNTY, WISC.
 NOV. 3, 1955

George T. Dunham
 GEORGE T. DUNHAM, SURVEYOR
 DELAVAN, WISCONSIN 11-11