

BENCH MARK - TOP OF HYDRANT ELEV. 150.27

ELEV. OF CENTERLINE OF CONCRETE PAVEMENT

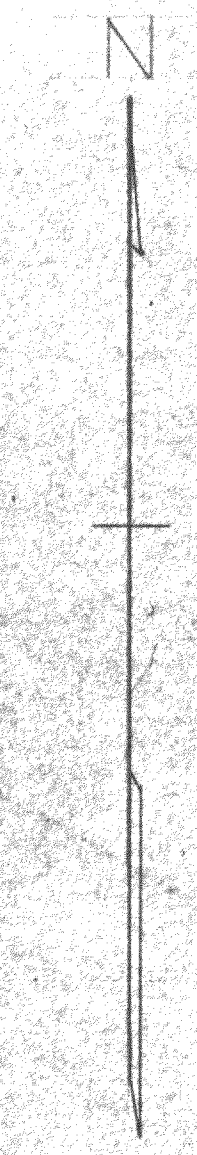
MAIN STREET U.S. HIGHWAY 12

6" WATER MAIN

8" SANITARY SEWER

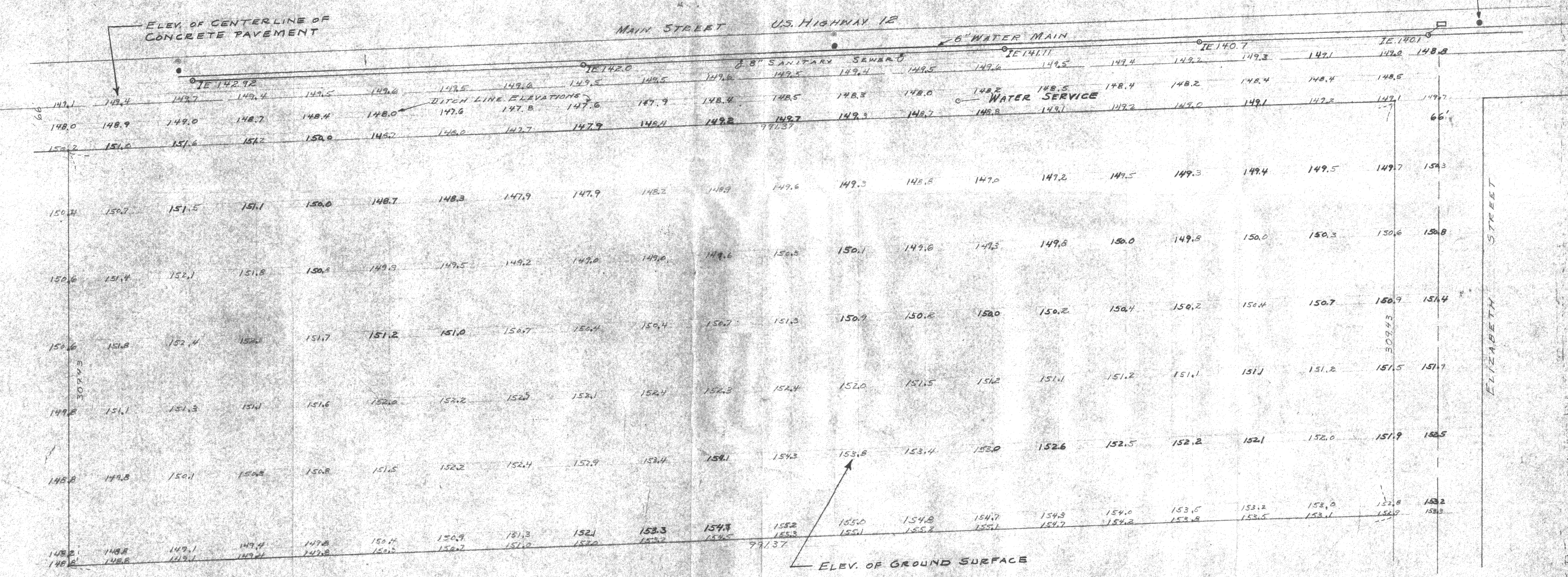
WATER SERVICE

DITCH LINE ELEVATIONS



● FIRE HYDRANT  
○ MANHOLE

ELIZABETH STREET



PART OF THE NW 1/4 OF THE SW 1/4 OF SECTION 5, T4N R15E, LOCATED IN THE CITY OF WHITEWATER, WALWORTH COUNTY, WISCONSIN.

TOPOGRAPHY		
DRAWN BY C.H. COETZEL	JENSEN & JOHNSON CIVIL ENGINEERS ELKHORN, WIS.	SCALE: 1"=40'
CHECKED BY S.P. JENSEN		REVISED
APPROVED BY		SHEET NO. 7 OF 7

WMP 219

10-87J-A