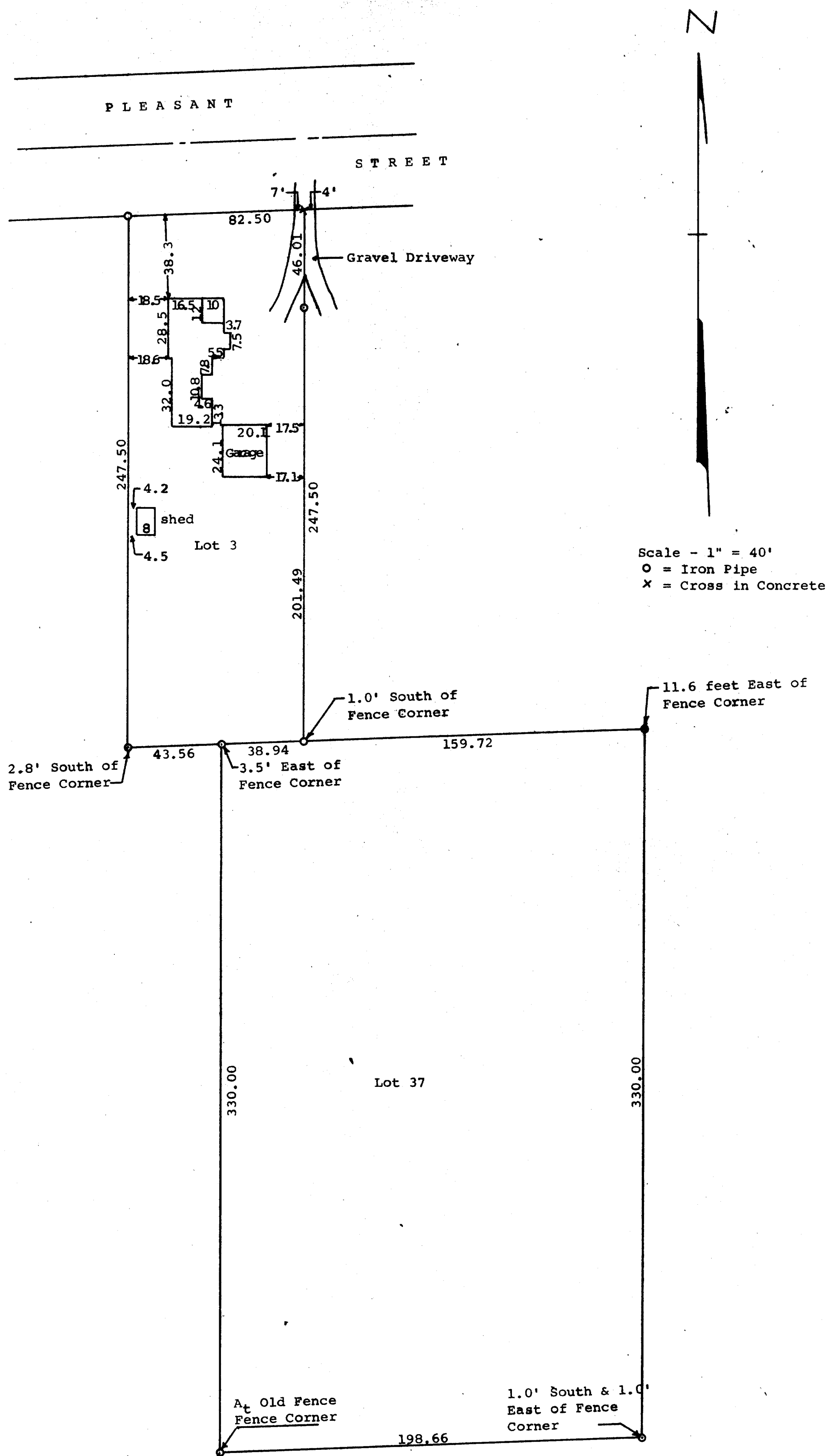


GEORGE T. DUNHAM
SURVEYING & SUBDIVISION
DELAVER, WISCONSIN



STATE OF WISCONSIN) SS
COUNTY OF WALWORTH)

I, George T. Dunham, Surveyor, certify that I have surveyed the property described as follows,

Lots 3 and 37 in Block 9 of Citizens Addition to the Village of Sharon, Walworth County, Wisconsin

and that the above plat is an accurate survey and a true representation thereof and correctly shows the exterior boundary lines and location of buildings on said property and the correct measurements thereof.

August 23, 1969

George T. Dunham
George T. Dunham, Surveyor