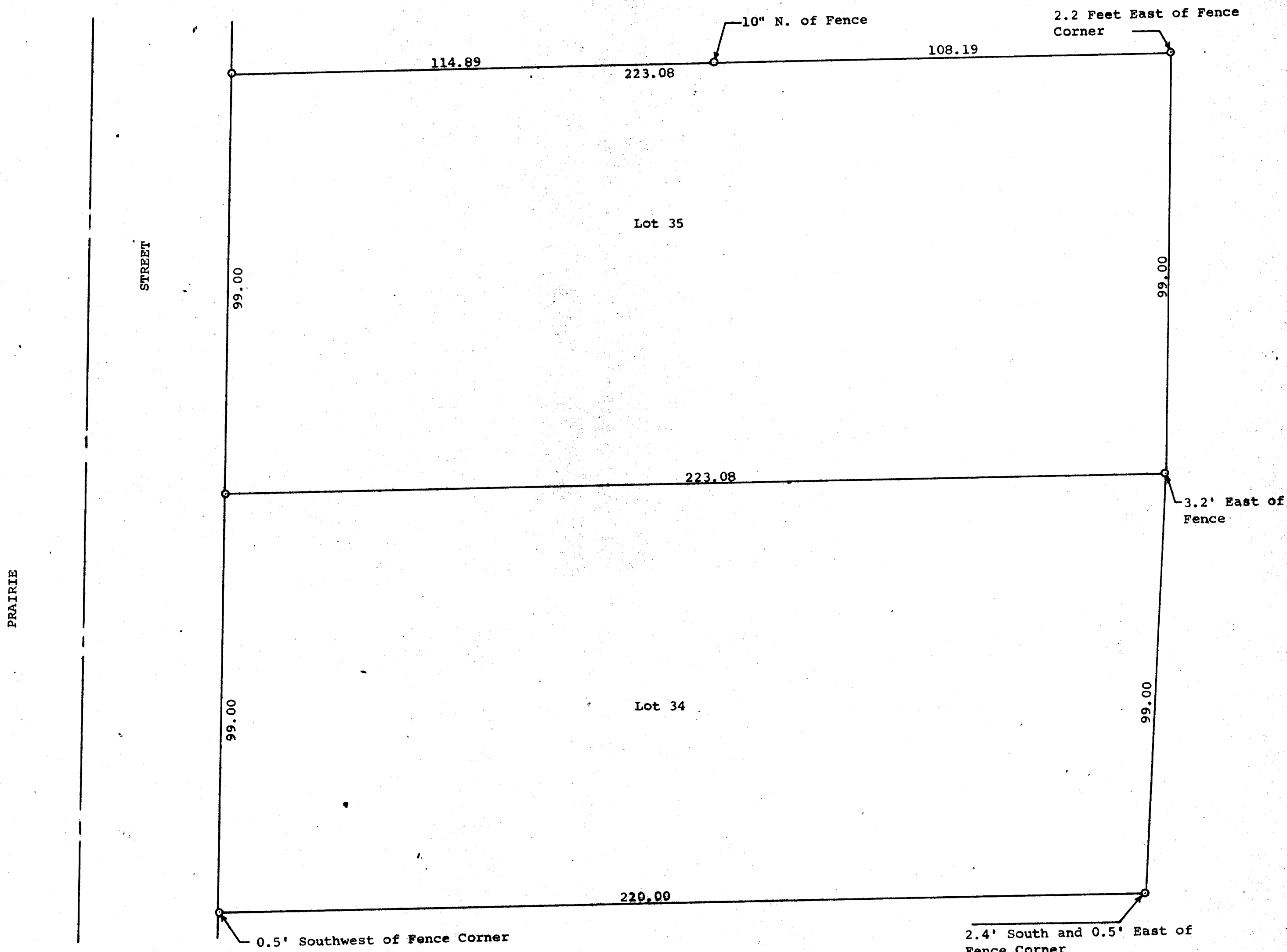


GEORGE T. DUNHAM
SURVEYOR & RECORDING
DELAWARE, WISCONSIN



STATE OF WISCONSIN)
WALWORTH COUNTY) SS

I, George T. Dunham, Surveyor, certify that I
have surveyed the property described as follows,
Lots 34 and 35 in Block 9 of Citizens Addition
to the Village of Sharon, Walworth County,
Wisconsin.

and that the above plat is an accurate survey and a true
representation thereof and correctly shows the exterior
boundary lines and the correct measurements thereof.
November 17, 1969

George T. Dunham
George T. Dunham, Surveyor

Scale - 1" = 20'
O = Iron Pipe