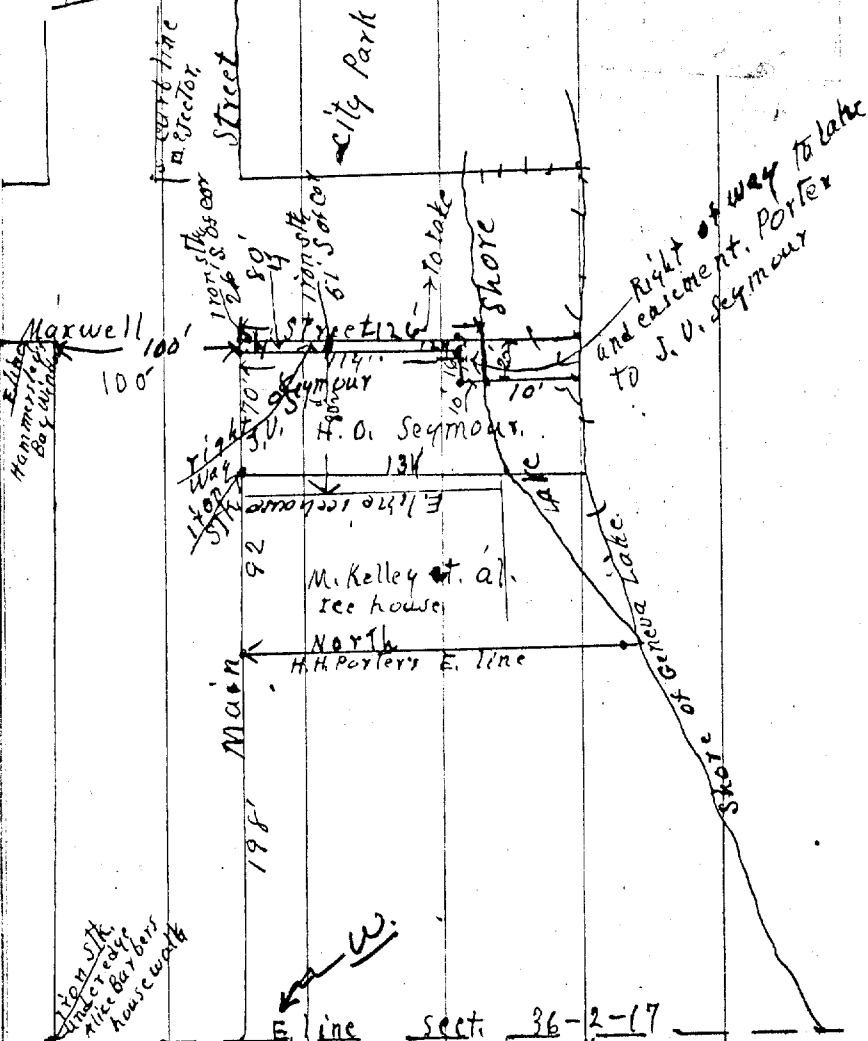


42.



Scale 100' to 1"
 May 4, 1927.

Plat No 114

Survey of H. O. Seymour lot nce H. N. Rose
 S. side Main + W. side Maxwell streets
 S. 70' wide, 290' E. of W. line sect. 36-2-17.
 Easement to J. V. Seymour as shown hereon,
 and described as follows:

Begin at a point in S. line Main St. 356'
 E. of W. line sect. 36-2-17. S. 11. said sect
 line 114' W. 11 S. line Main St. 16' S. 11
 said sect line to shore Geneva Lake N. E. along
 said shore to the W. line of Maxwell St.
 extended; thence N. 41' said W. line to S.
 line Main St. thence W. in said S. line 4'
 to place of beginning.

Surveyed Mar. 4, 1927.
 Measured east on N. line 70' from
 iron stake set by J. G. S. in former survey
 at N. E. cor. Martin Kelley lot, made notch
 in slab of old concrete walk. ^{also set iron stk} 26' south
 of true cor. Measured South on West
 line Maxwell Street, 50' + set iron stk.
 80 1/2' east of ice house; lined in
 and measured south on said W.
 line 63' and set iron stake thence
 S. in same line 12' to Lake shore.
 Measured West on N. line 4' and made
 notch in slab 2' south of cor.
 Measured West 4' from S. stake and
 set iron stk; thence West 16' and
 10' to Lake shore, 14' line 126'
 to Lake, ^{2nd line 114' x 10'}
 See plat, previous page, 134.
 Measured S. on W. line H. O. Seymour lot
 to Lake shore, iron stk near shore.