

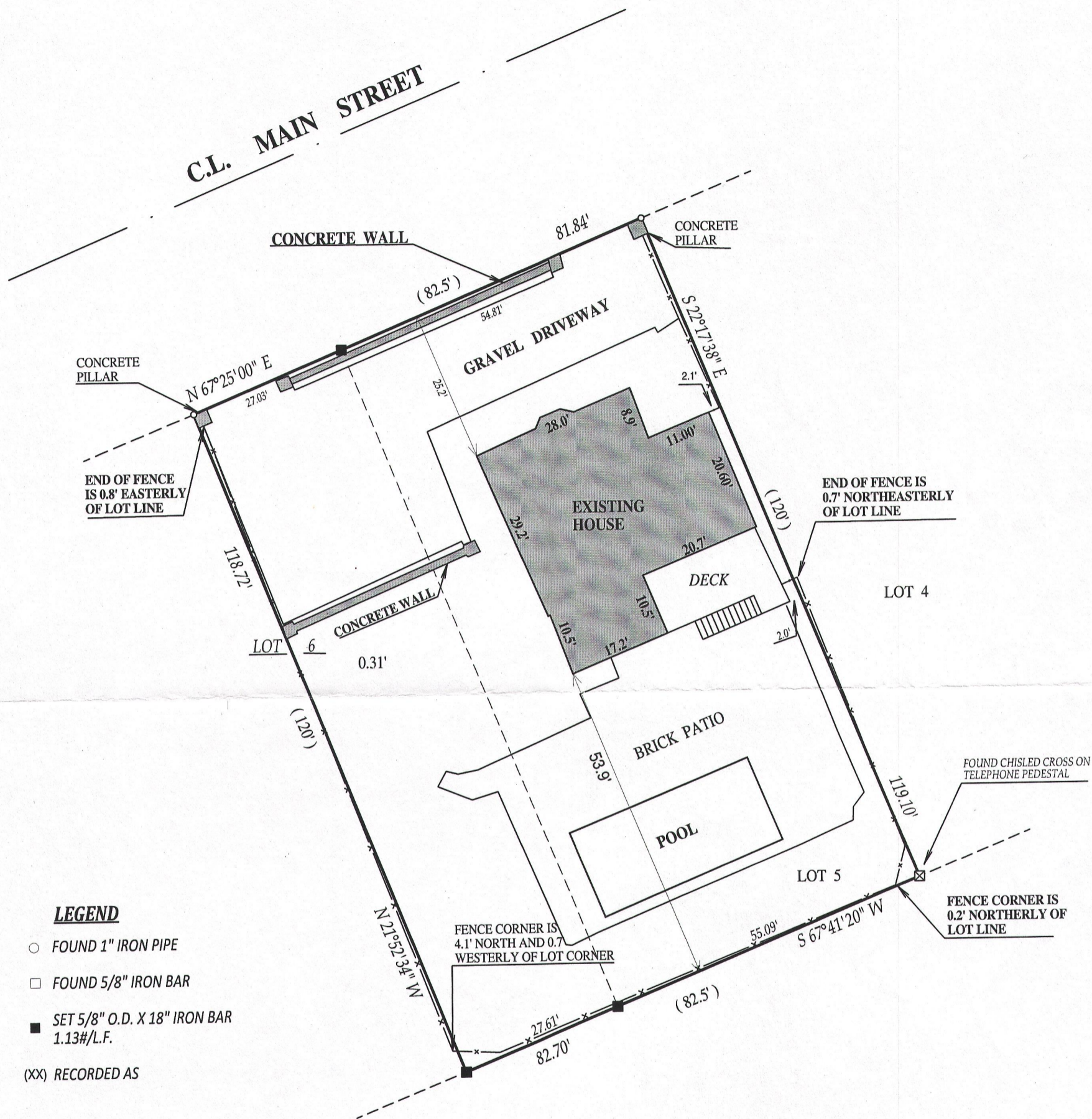
PREPARED FOR:  
DAVID C. CURRY  
GENEVA LAKEFRONT REALTY  
57 WEST GENEVA STREET  
WILLIAMS BAY, WI 53191

# PLAT OF SURVEY

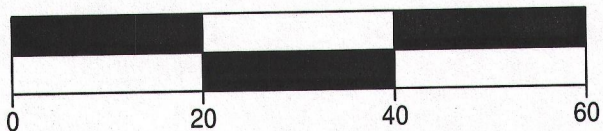
-OF-

LOT 5 AND THE EAST 1/2 OF LOT 6 IN BLOCK 31 OF LAKE  
GENEVA MANOR SUBDIVISION, TRACT 17, IN THE CITY OF  
LAKE GENEVA, WALWORTH COUNTY WISCONSIN.

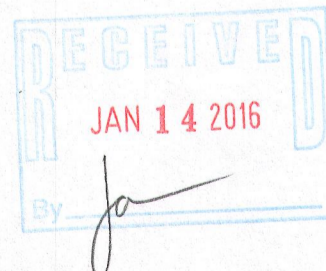
LYNCH & ASSOCIATES  
ENGINEERING CONSULTANTS, LLC.  
405 SKYLINE DRIVE, SUITE C  
LAKE GENEVA, WI 53147  
(262) 248-3697



SCALE 1" = 20'



JOB # 15-615  
TAX ID # ZLM 00071



DATED THIS 31st DAY OF JULY, 2015

KENNETH B. MEHRING S-2838  
Wisconsin Professional Land Surveyor  
(original if signed in red)