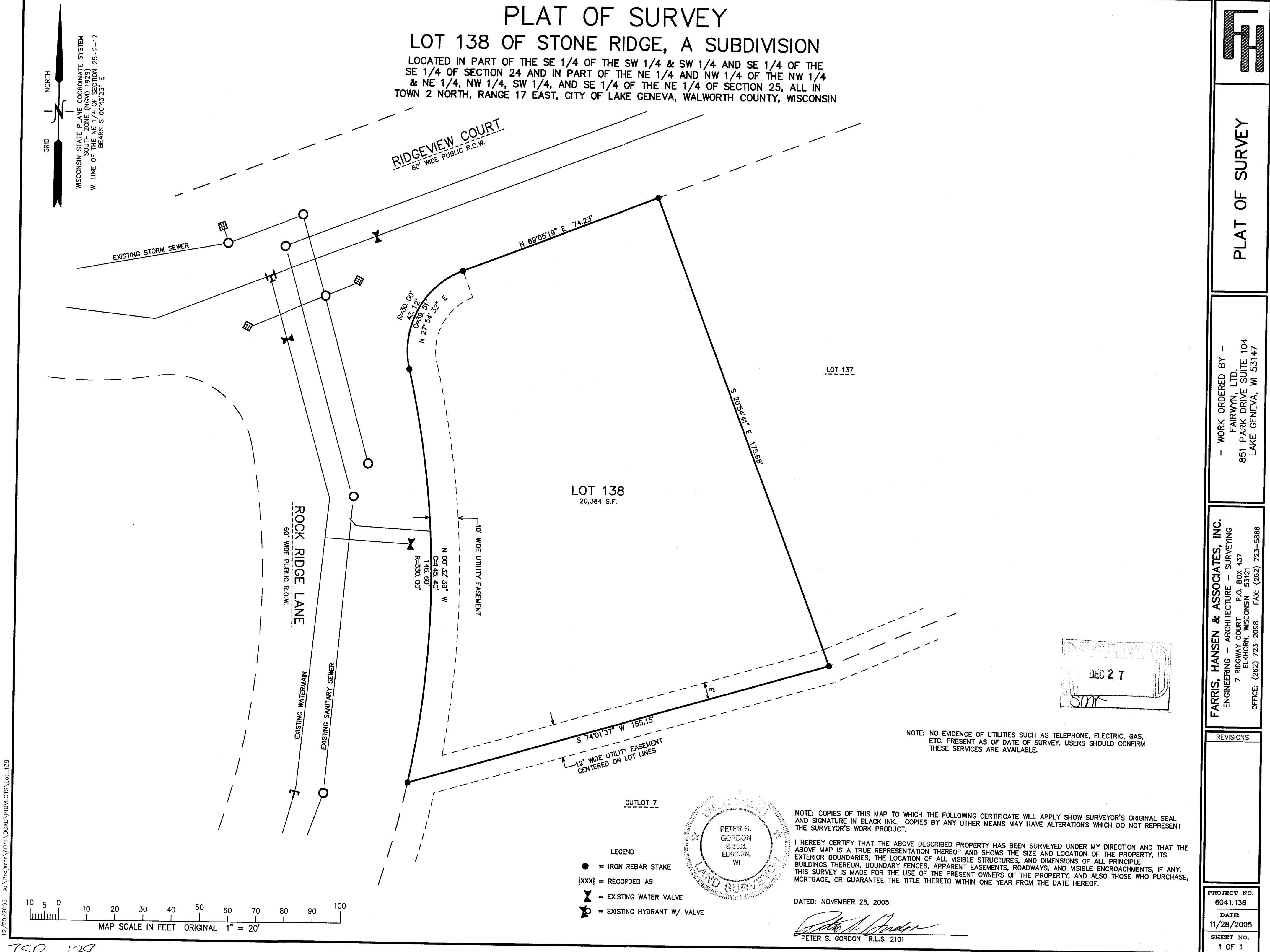


12/20/2005 X:\Projects\6041\DCAD\INDV.LOTS\Lot\_138

DEC 21 2005



PLAT OF SURVEY

— WORK ORDERED BY —  
FAIRWYN, LTD.  
851 PARK DRIVE SUITE 104  
LAKE GENEVA, WI 53147

FARRIS, HANSEN & ASSOCIATES, INC.  
ENGINEERING — ARCHITECTURE — SURVEYING  
7 RIDGWAY COURT P.O. BOX 437  
ELKHORN, WISCONSIN 53121  
OFFICE: (262) 723-2098 FAX: (262) 723-5886

REVISIONS

PROJECT NO.  
6041.138  
DATE:  
11/28/2005  
SHEET NO.  
1 OF 1