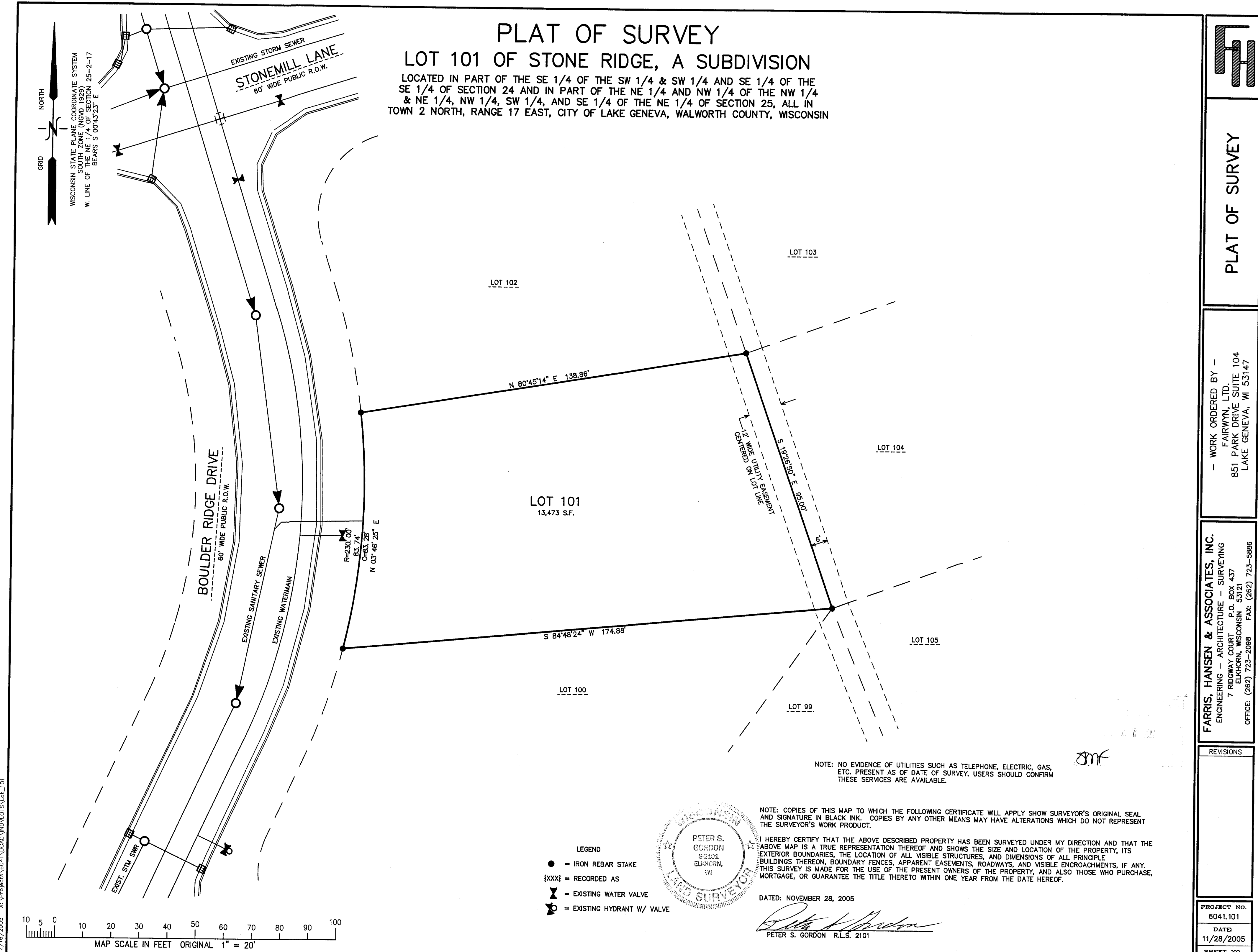
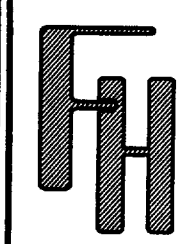


12/16/2005 X:\Projects\6041\DCAD\INDV.LOTS\Lot_101



ZSR-101

007-2333



PLAT OF SURVEY

WORK ORDERED BY -
FAIRWYN, LTD.
851 PARK DRIVE SUITE 104
LAKE GENEVA, WI 53147

FARRIS, HANSEN & ASSOCIATES, INC.
ENGINEERING - ARCHITECTURE - SURVEYING
7 RIDGWAY COURT P.O. BOX 437
ELKHORN, WISCONSIN 53121
OFFICE: (262) 723-2098 FAX: (262) 723-5886

REVISIONS	
PROJECT NO.	6041.101
DATE:	11/28/2005
SHEET NO.	1 OF 1