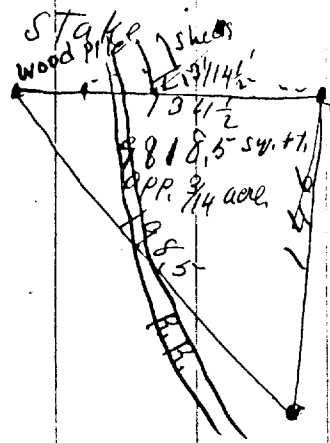


6 APR 8, 1919.

Survey of S. part of  
Transit set over iron stake  
and line run over stake.  
line continued S. to  
measured S. from S. E. Cor  
stake. at rt is measured  
Joy in - R. R. land extends  
foot of wood pile ~~98'~~  
1st point to E. rail switch  
S. of S. W. Cor. coat  
Measured S. on B line



Peter Plinn Est.

Peter Plinn Est. for Frank Briegel,  
N.W. Cor. George & Madison Sts.  
S.W. " " " " " "  
N.E. R.R. line  
J. Baskaw's land 126' + set iron  
W. to R.R. line 134 1/2' (124' is  
S. to said line Stake set a  
114 1/2 W. of 1st point  
Track 98'. Said E. + W. line is 13'  
sheds. W. end of line on top of <sup>Wood pile</sup>  
to R.R. Rt. of way 146' + set iron

Blue print + description  
delivered.