

LOT LINE ADJUSTMENT

RSV ENGINEERING, INC
 ENGINEERS, PLANNERS, SURVEYORS
 CONSTRUCTION MANAGERS
 ENVIRONMENTAL SCIENTISTS
 801 MAIN STREET, MUKWONAGO, WISCONSIN 53149 (414) 363-2004

REV. 4/8/98
 DATE: 11/19/97

FOR: KEEFE REALTY

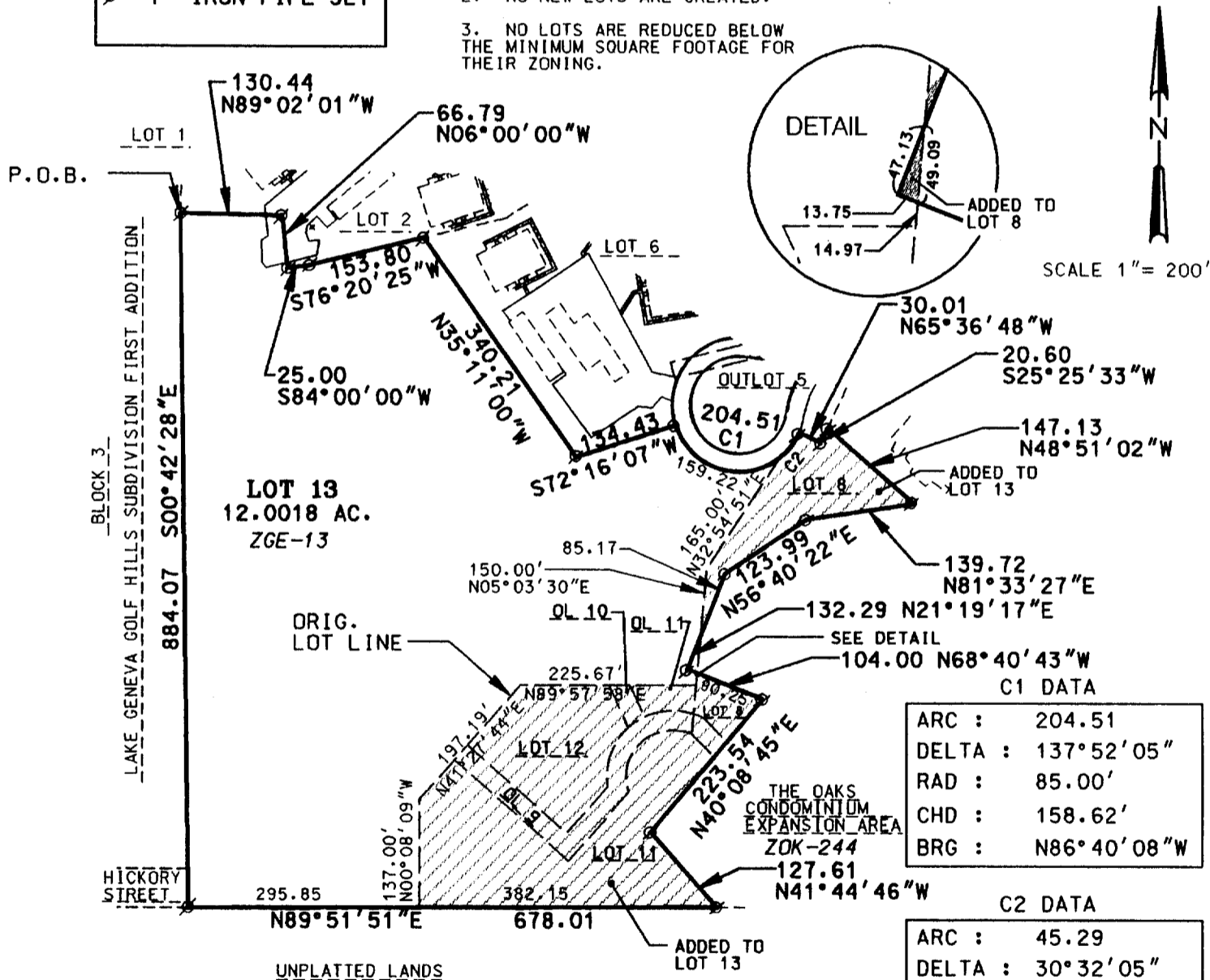
DESCRIPTION:

THE SUMMIT, BEING LOT 12, AND 13, OUTLOTS 10 AND 11, AND PARTS OF LOT 8 AND LOT 11 OF GENEVA EAST, LOCATED IN SECTION 31, TOWN 2 NORTH, RANGE 18 EAST, CITY OF LAKE GENEVA, WALWORTH COUNTY, WISCONSIN BEING MORE COMPLETELY DESCRIBED AS FOLLOWS: BEGINNING AT THE SOUTHWEST CORNER OF LOT 1, GENEVA EAST; THENCE S00°42'28"E, A DISTANCE OF 884.07' TO A POINT; THENCE N89°51'51"E, A DISTANCE OF 678.01' TO A POINT; THENCE N41°44'46"W, A DISTANCE OF 127.61' TO A POINT; THENCE N40°08'45"E, A DISTANCE OF 223.54' TO A POINT; THENCE N68°40'43"W, A DISTANCE OF 104.00' TO A POINT; THENCE N21°19'17"E, A DISTANCE OF 132.29' TO A POINT; THENCE N56°40'22"E, A DISTANCE OF 123.99' TO A POINT; THENCE N81°33'27"E, A DISTANCE OF 139.72' TO A POINT; THENCE N48°51'02"W, A DISTANCE OF 147.13' TO A POINT; THENCE S25°25'33"W, A DISTANCE OF 20.60' TO A POINT; THENCE N65°36'48"W, A DISTANCE OF 30.01' TO A POINT; THENCE ALONG SAID CURVE TO THE RIGHT, A LENGTH OF 204.51', SAID CURVE HAVING A RADIUS OF 85.00' A CHORD THAT BEARS N86°40'08"W, A DISTANCE OF 158.62'; THENCE S72°16'07"W, A DISTANCE OF 134.43' TO A POINT; THENCE N35°11'00"W, A DISTANCE OF 340.21' TO A POINT; THENCE S76°20'25"W, A DISTANCE OF 153.80' TO A POINT; THENCE S84°00'00"W, A DISTANCE OF 25.00' TO A POINT; THENCE N06°00'00"W, A DISTANCE OF 66.79' TO A POINT; THENCE N89°02'01"W, A DISTANCE OF 130.44' TO THE POINT OF BEGINNING. SAID LANDS CONTAINING 12.0018 ACRES MORE OR LESS.

- NOTES:**
1. THIS IS A LOT LINE ADJUSTMENT BETWEEN ADJACENT PROPERTY OWNERS.
 2. NO NEW LOTS ARE CREATED.
 3. NO LOTS ARE REDUCED BELOW THE MINIMUM SQUARE FOOTAGE FOR THEIR ZONING.

LEGEND

∅ 1" IRON PIPE SET



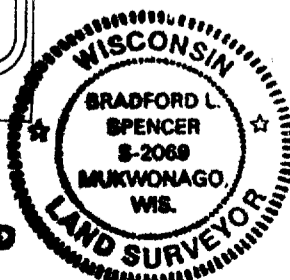
THE ABOVE MAP IS A TRUE REPRESENTATION THEREOF AND SHOWS THE SIZE AND LOCATION OF ALL THE PROPERTY, EXTERIOR BOUNDARIES, THE LOCATION OF ALL VISIBLE BOUNDARY FENCES, APPARENT EASEMENTS, ROADWAYS AND VISIBLE ENCROACHMENTS, IF ANY.

THIS SURVEY IS MADE FOR THE USE OF THE PRESENT OWNERS OF THE PROPERTY, AND ALSO THOSE WHO PURCHASE, MORTGAGE OR GUARANTEE TITLE THERETO WITHIN ONE (1) YEAR FROM DATE HERETO.

BRADFORD L. SPENCER, R.L.S. 2069
 RSV#97025/7025LOT.DGN

RECEIVED
 APR 16 1998

**THIS IS ORIGINAL
 PRINT ONLY IF
 SEAL IS IMPRINTED
 IN RED**



007-1752

LOT LINE ADJUSTMENT



FOR: KEEFE REALTY

REV. 4/8/98
DATE: 11/19/97

LAND TO BE ADDED TO TAX KEY #ZGE 13

BEING A PART OF THE OAKS CONDOMINIUM EXPANSION AREA IN THE SOUTHWEST $\frac{1}{4}$ OF SECTION 31, TOWNSHIP 2 NORTH, RANGE 18 EAST, CITY OF LAKE GENEVA, WALWORTH COUNTY, WISCONSIN, BEING MORE COMPLETELY DESCRIBED AS FOLLOWS:

COMMENCING AT THE SOUTHWEST CORNER OF LOT 13 OF GENEVA EAST SUBDIVISION; THENCE WITH THE SOUTH LINE OF LOT 13 N89°51'51"E, 295.85' TO THE POINT OF BEGINNING; THENCE FROM THE POINT OF BEGINNING N00°08'09"W, 137.00' TO A POINT; THENCE N41°27'44"E, 197.19' TO A POINT; THENCE N89°57'58"E, 225.67' TO A POINT; THENCE N05°03'30"E, 14.97' TO A POINT; THENCE S68°40'43"E, 90.25' TO A POINT; THENCE S40°08'45"W, 223.54' TO A POINT; THENCE S41°44'46"E, 127.61' TO A POINT; THENCE S89°51'51"W, 382.16' TO THE POINT OF BEGINNING. CONTAINING 2.1530 ACRES, MORE OR LESS.

LAND TO BE ADDED TO TAX KEY #ZGE 13

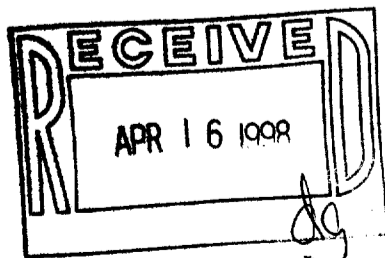
BEING A PART OF THE OAKS CONDOMINIUM EXPANSION AREA IN THE SOUTHWEST $\frac{1}{4}$ OF SECTION 31, TOWNSHIP 2 NORTH, RANGE 18 EAST, CITY OF LAKE GENEVA, WALWORTH COUNTY, WISCONSIN, BEING MORE COMPLETELY DESCRIBED AS FOLLOWS:

BEGINNING AT THE COMMON CORNER OF LOT 7, LOT 8, AND OUTLOT 5 OF GENEVA EAST SUBDIVISION; THENCE WITH THE LINE OF LOT 8 S25°25'33"W, 20.60'; THENCE N65°36'48"W, 30.01' TO A POINT OF CURVATURE; THENCE WITH A CURVE TO THE RIGHT HAVING AN ARC OF 45.29', A RADIUS OF 85.00', AND A CHORD THAT BEARS S39°39'52"W, 44.76' TO A POINT; THENCE S32°54'51"W, 165.00' TO A POINT; THENCE S05°03'30"W, 85.94' TO A POINT; THENCE N21°19'17"E, 85.17' TO A POINT; THENCE N56°40'22"E, 123.99' TO A POINT; THENCE N81°33'27"E, 139.72' TO A POINT; THENCE N48°51'02"W, 147.13' TO THE POINT OF BEGINNING. CONTAINING 0.4447 ACRES, MORE OR LESS.

LAND TO BE ADDED TO TAX KEY #ZOK-24A

BEING A PART OF THE OAKS CONDOMINIUM EXPANSION AREA IN THE SOUTHWEST $\frac{1}{4}$ OF SECTION 31, TOWNSHIP 2 NORTH, RANGE 18 EAST, CITY OF LAKE GENEVA, WALWORTH COUNTY, WISCONSIN, BEING MORE COMPLETELY DESCRIBED AS FOLLOWS:

COMMENCING AT THE SOUTHWEST CORNER OF LOT 13, GENEVA EAST SUBDIVISION; THENCE WITH THE SOUTH LINE OF LOT 13 N89°51'51"E, 295.85' TO A POINT; THENCE N00°08'09"W, 137.00' TO A POINT; THENCE N41°27'44"E, 197.19' TO A POINT; THENCE N89°57'56"E, 225.67' TO A POINT; THENCE N05°30'30"E, 14.97' TO THE POINT OF BEGINNING; THENCE FROM THE POINT OF BEGINNING N68°40'43"W, 13.75' TO A POINT; THENCE N21°19'17"E, 47.13' TO A POINT; THENCE S05°03'30"W, 49.09' TO THE POINT OF BEGINNING. CONTAINING 0.0074 ACRES, MORE OR LESS.



THIS IS ORIGINAL
PRINT ONLY IF
SEAL IS IMPRINTED
IN RED

