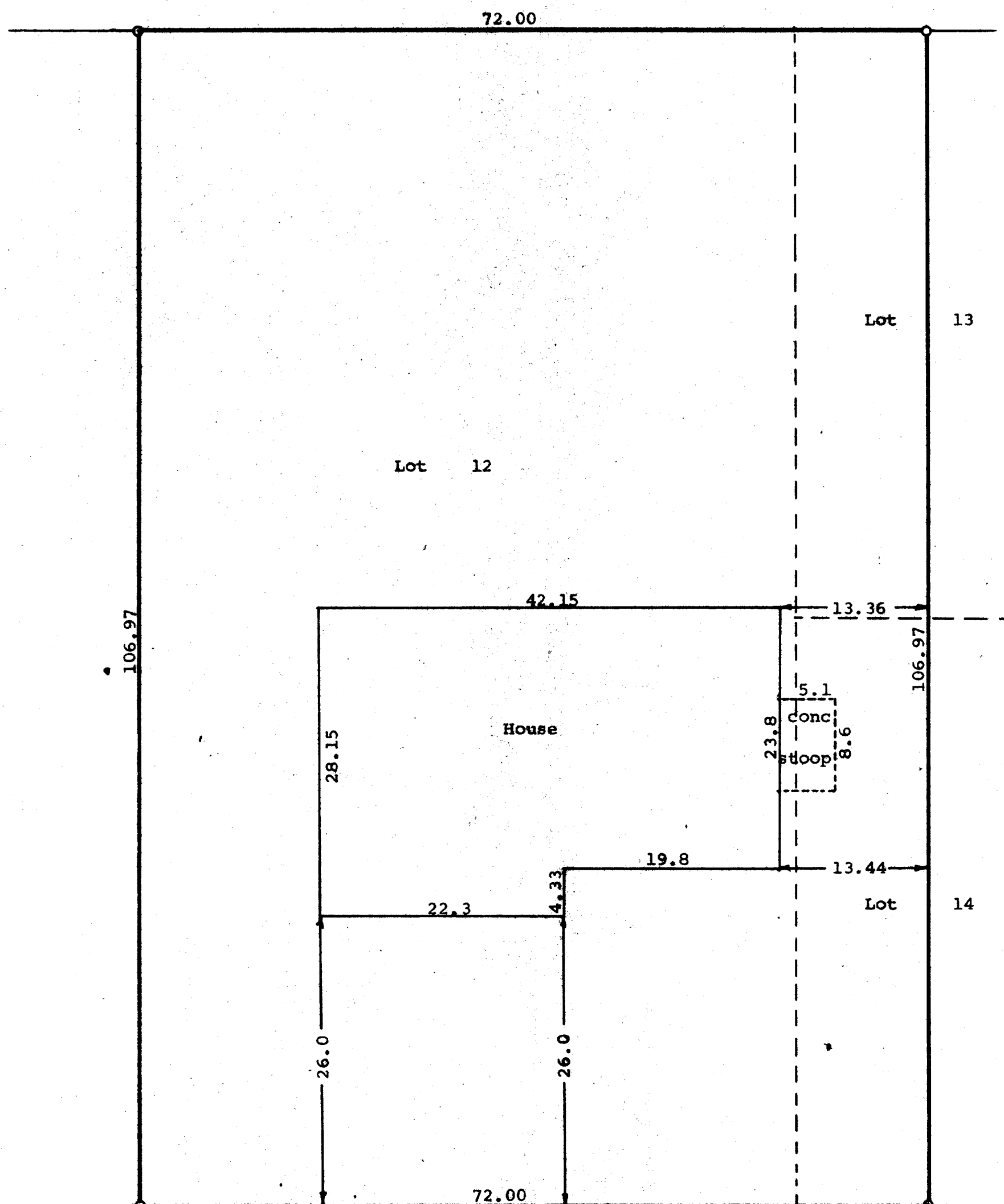


GEORGE T. DUNHAM
SURVEYING & ENGINEERING
DELAVER, WISCONSIN



N

Scale - 1" = 10'
O = Iron Pipe.

MILWAUKEE STREET

STATE OF WISCONSIN) SS
COUNTY OF WALWORTH)

I, George T. Dunham, Surveyor, certify that I have surveyed the property described as follows,

Lot 12 and the West 12.00 feet of Lots 13 and 14, Block 1, Warhurst Subdivision of the City of Lake Geneva, Walworth County, Wisconsin.

and that the above plat is an accurate survey and a true representation thereof and correctly shows the exterior boundary lines and location of buildings on said property and the correct measurements thereof.
October 16, 1969

George T. Dunham
George T. Dunham, Surveyor