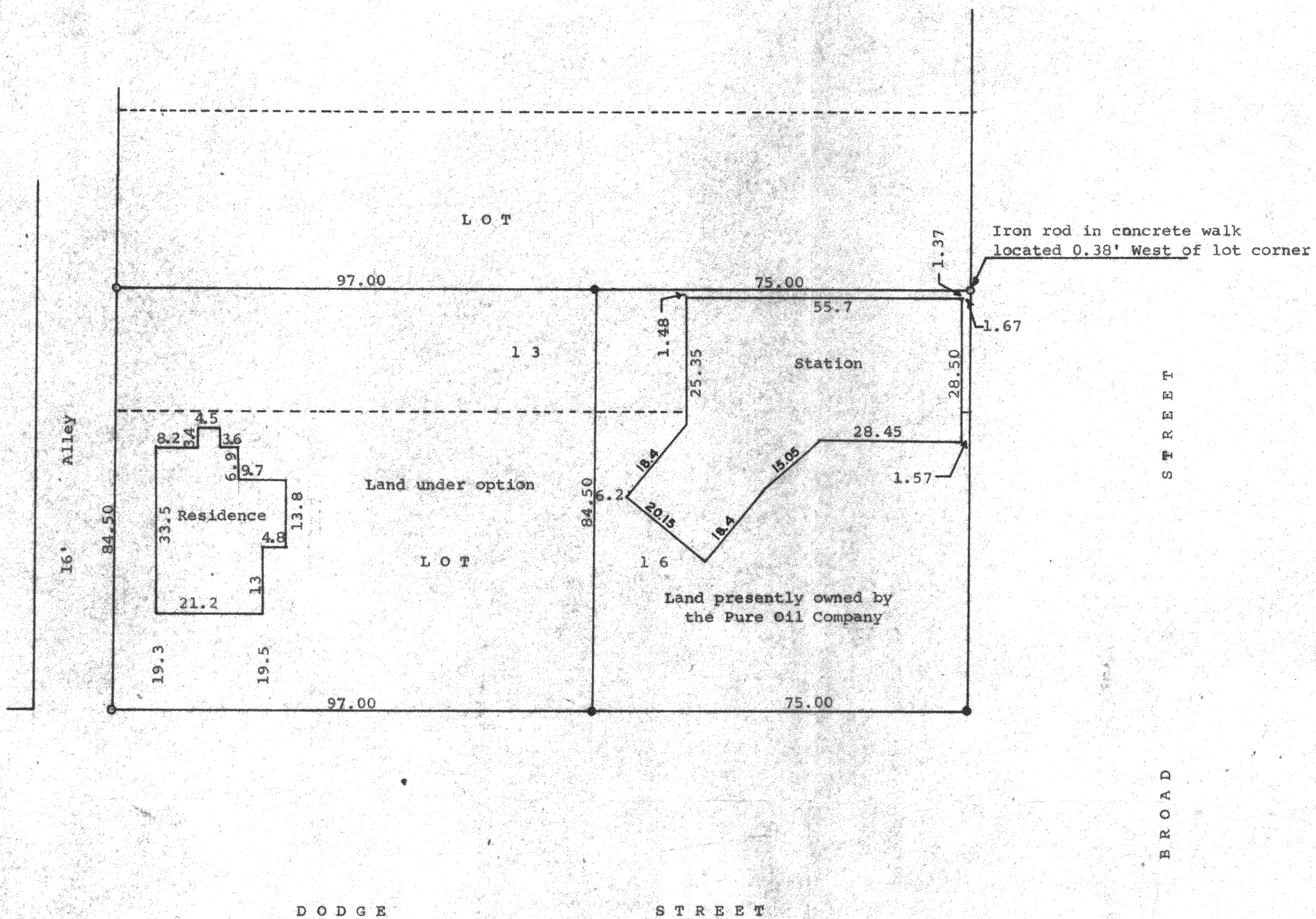


GEORGE T. DUNHAM
SURVEYING & SUBDIVIDING
DELAVER, WISCONSIN



Scale - 1" = 20'
● = Concrete Monument
○ = Iron Pipe

Plat of survey of Lot 16 and the South 24.5 feet of Lot 13, in Block 3 of Charles M. Goodsell's Subdivision of Blocks 3 and 4 of the Village of Geneva (Now City of Lake Geneva) Walworth County, Wisconsin. March 2, 1966

George T. Dunham
George T. Dunham, Surveyor