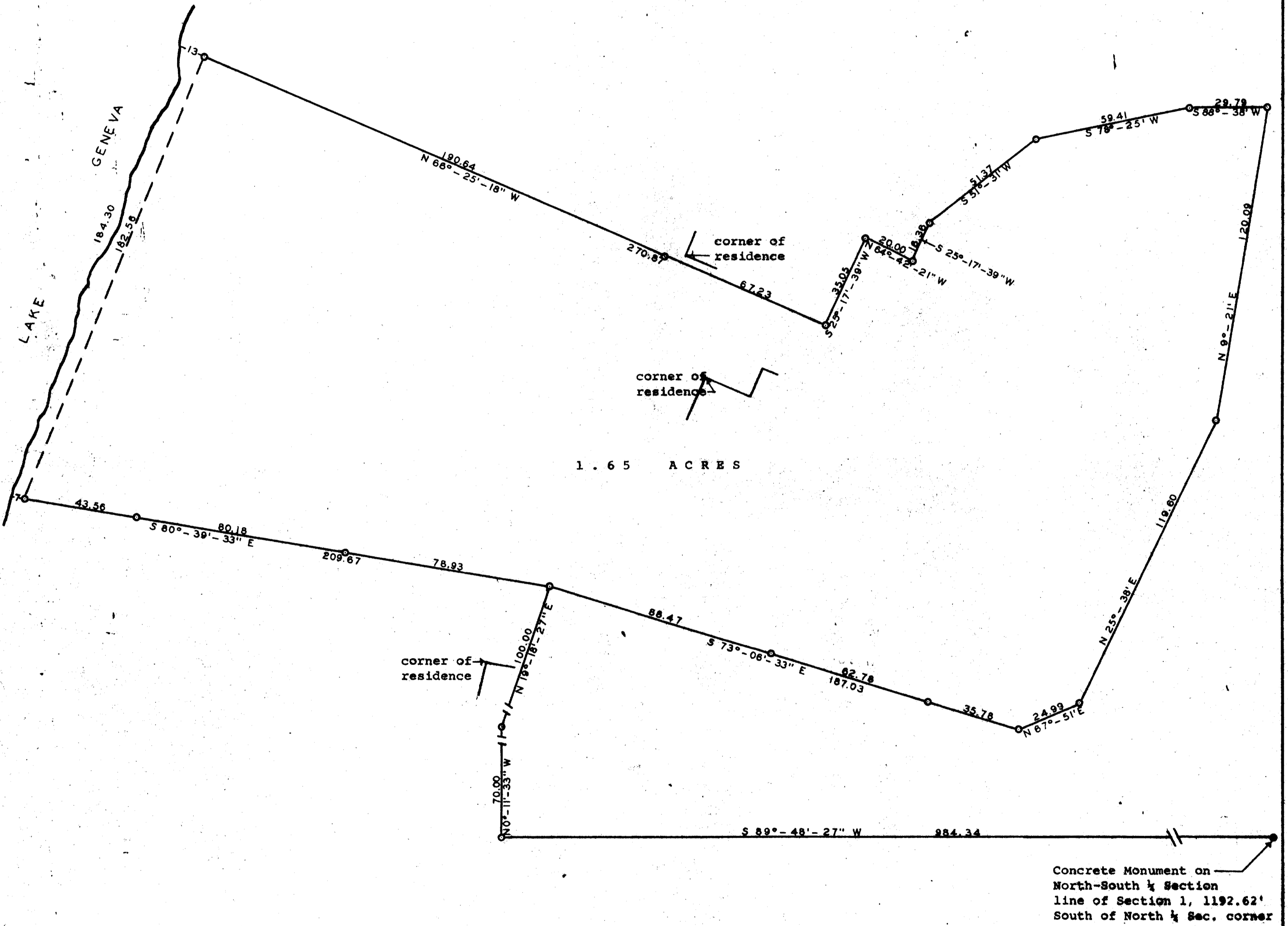


GEORGE T. DUNHAM
SURVEYING & SUBDIVIDING
DELAVAN, WISCONSIN



Scale - 1" = 30'
O = Iron Pipe



Plat of survey of a parcel of land located in the Northwest ¼
of Section 1, T 1 N R 17 E, City of Lake Geneva, Walworth County,
Wisconsin.
July 27, 1964

George T. Dunham
George T. Dunham, Surveyor

Concrete Monument on
North-South ¼ Section
line of Section 1, 1192.62'
South of North ¼ Sec. corner