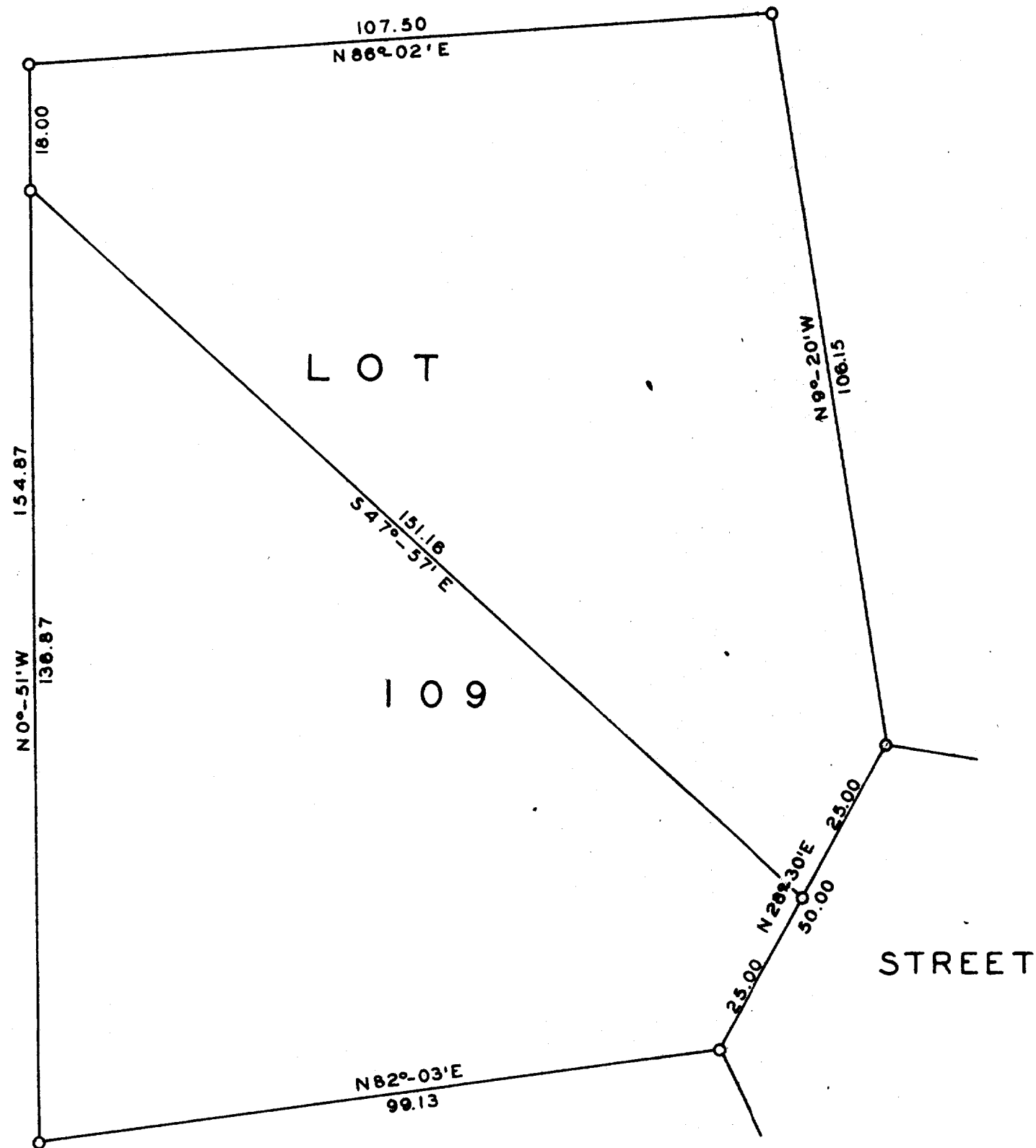


DUNHAM & RASMUSSEN  
SURVEYING & ENGINEERING  
DELAVAN, WISCONSIN



SCALE  $\sim 1" = 20'$   
O = IRON PIPE

Plat of survey of Lot 109 of Sturwood Addition No. 4,  
City of Lake Geneva, Walworth County, Wisconsin.  
July, 1961

*George C. Dunham*  
George C. Dunham, Surveyor