

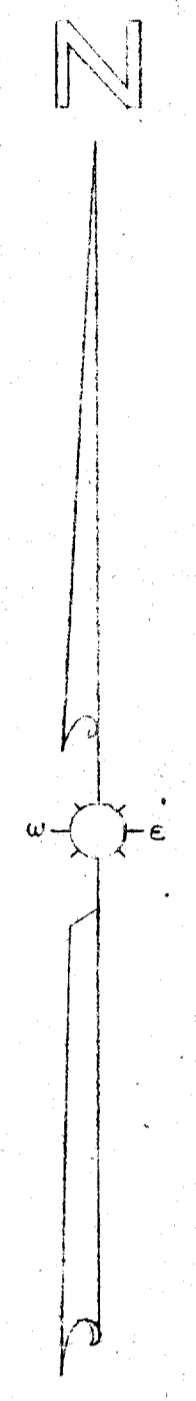
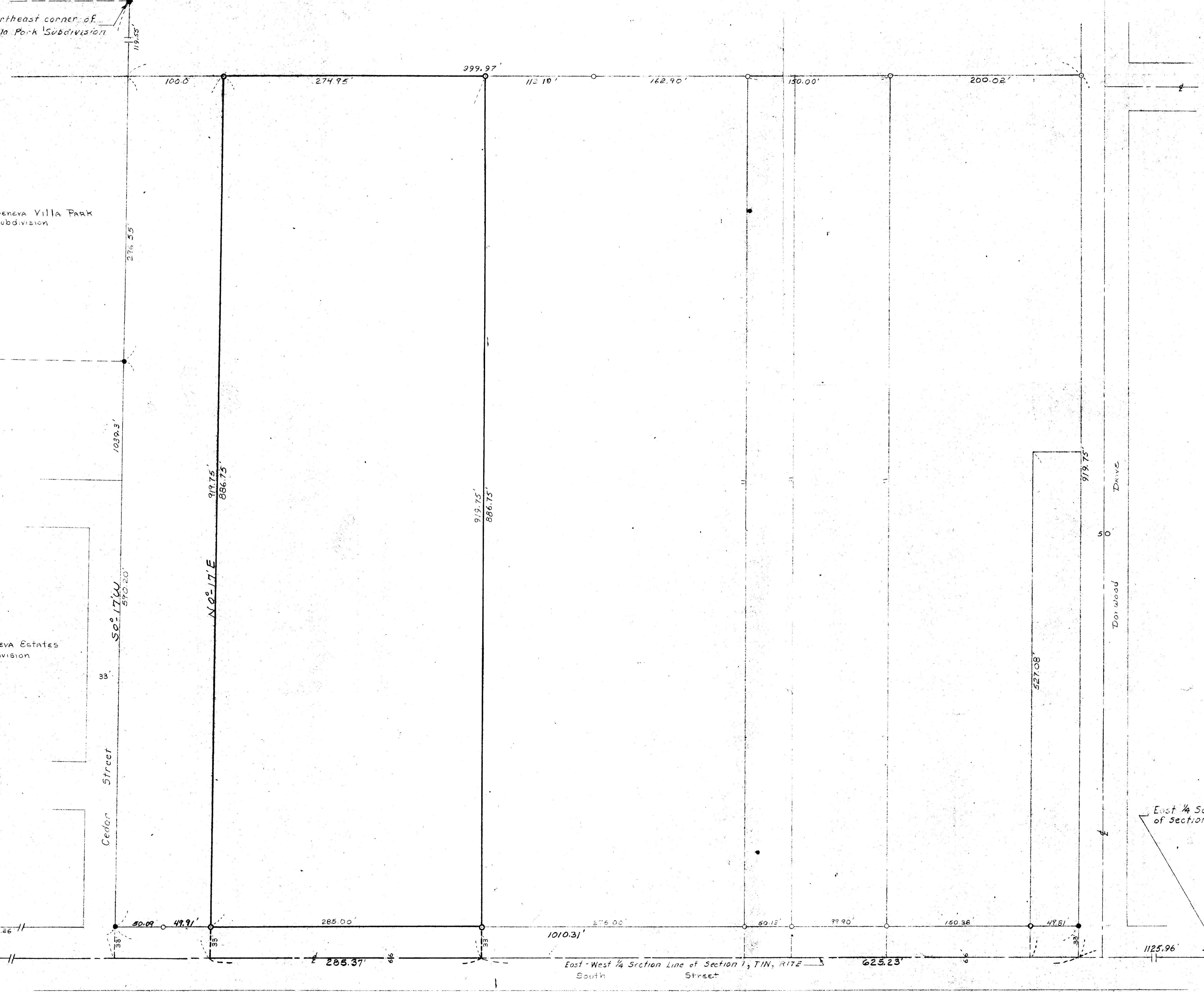
Northeast corner of Villa Park Subdivision

Lake Geneva Villa Park Subdivision

Lake Geneva Estates Subdivision

Middle 1/4 Section corner of Section 1, T1N, R17E

Now UP-118 + UP-118 J



H.E. Wells' Addition

East 1/4 Section corner of Section 1, T1N, R17E

- Iron Pipe
- Concrete Monument
- Cut Stone monument

Plat of Survey of Parcel of land located in the NE 1/4 of Section 1, T1N, R17E, City of Lake Geneva, Walworth County, Wisconsin

DRAWN BY P.J.	JENSEN & JOHNSON CIVIL ENGINEERS ELKHORN, WIS. DATE FEBRUARY 1, 1968	SCALE: 1" = 50'
CHECKED BY <i>Floyd Jensen</i>		REVISION
APPROVED BY		SHEET NO. 1 OF 7-53 J