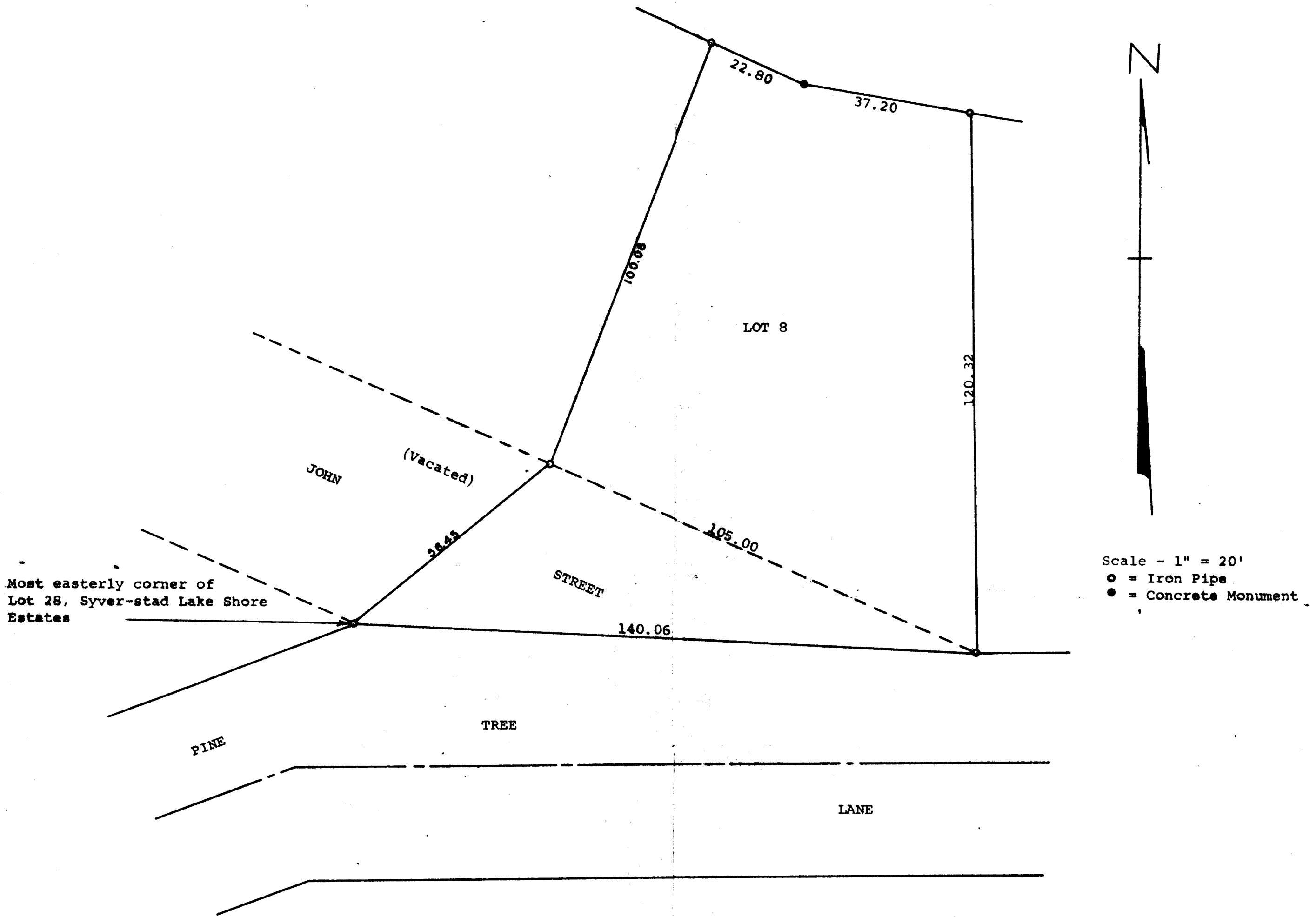


GEORGE T. DUNHAM
SURVEYING & SUBDIVIDING
DELAVAN, WISCONSIN



Plat of Lot 8 in Syver-stad Lake Shore Estates and of a part of John Street, now vacated, in said Syver-stad Lake Shore Estates located in Section 1, T 1 N, R 17 E, City of Lake Geneva, Walworth County, Wisconsin.
October 1, 1973

George T. Dunham
George T. Dunham, Surveyor

