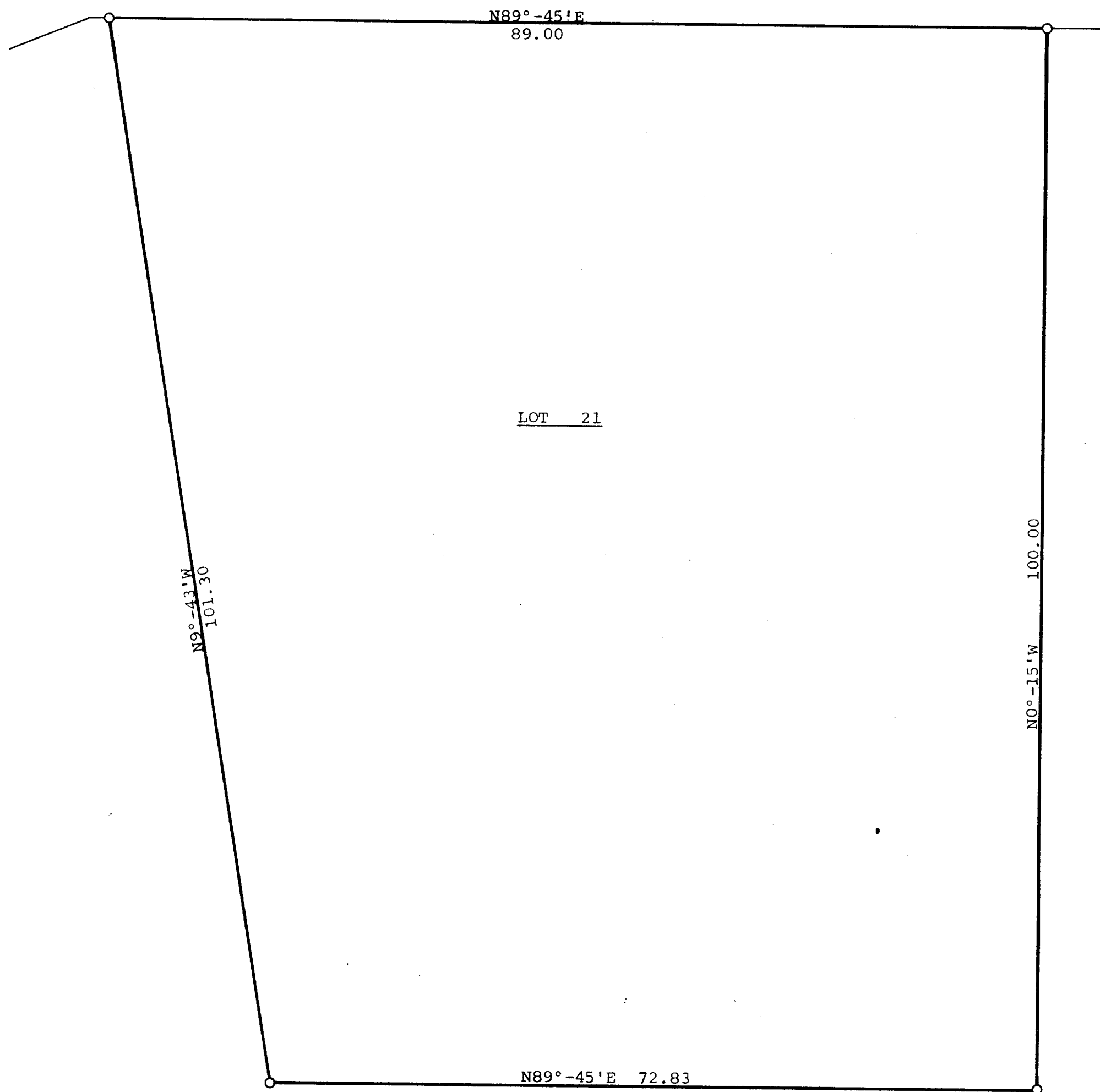


GEORGE T. DUNHAM
SURVEYING & SUBDIVIDING
DELAVAN, WISCONSIN

PINE

TREE

LANE



N

Scale - 1" = 10'
○ = Iron Pipe
● = Concrete Monument

Plat of survey of Lot 21 of Syverstad Lake Shore Estates, City
of Lake Geneva, Walworth County, Wisconsin.
August 22, 1970

George T. Dunham
George T. Dunham, Surveyor