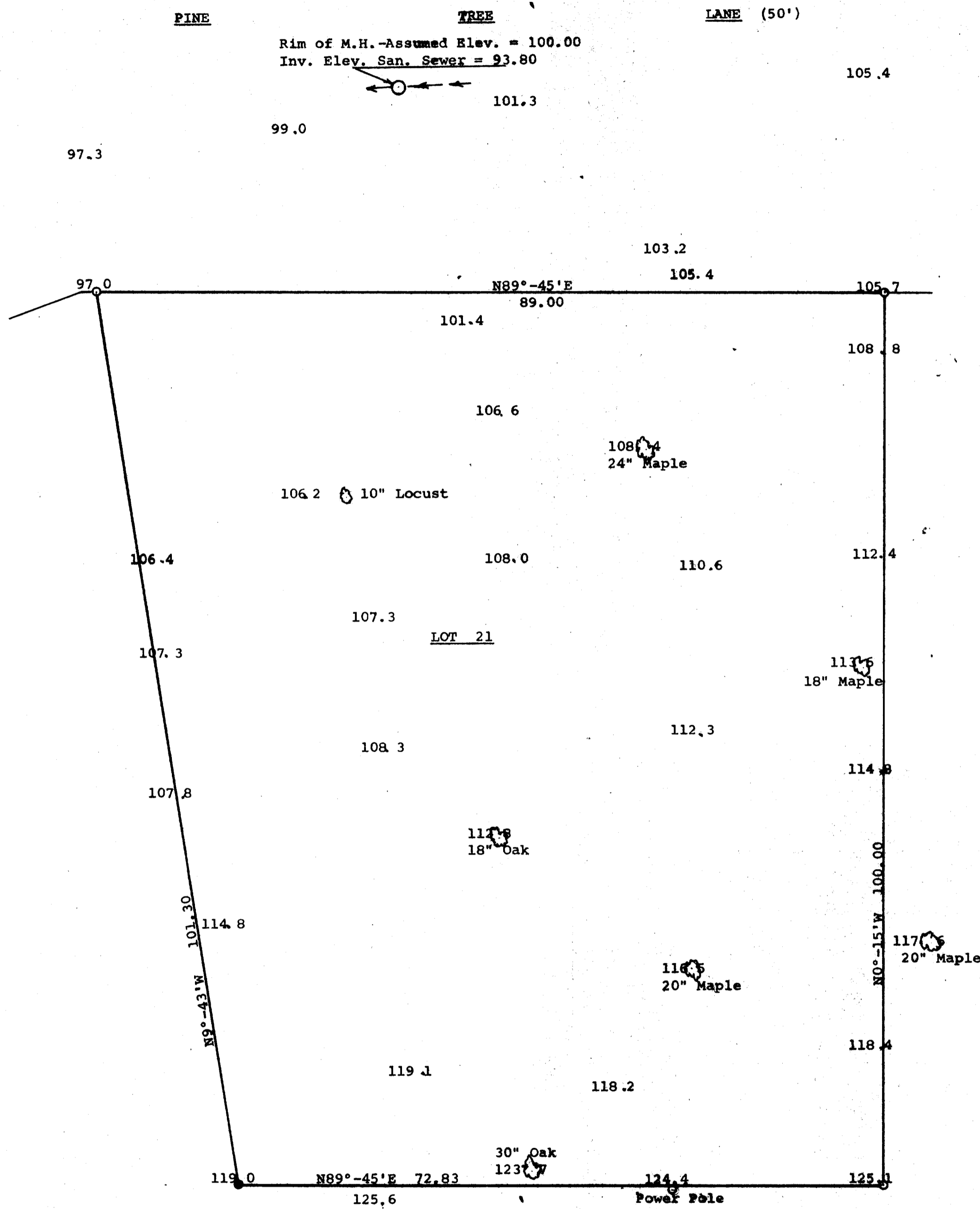


GEORGE T. DUNHAM
 SURVEYING & SUBDIVISION
 DELAVAN, WISCONSIN



Scale - 1" = 10'
 O = Iron Pipe
 ● = Concrete Monument

Plat of survey of Lot 21 of Syverstad Lake Shore Estates, City of Lake Geneva, Walworth County, Wisconsin showing the location of the larger trees with elevations spotted at various points.
 August 22, 1970

George T. Dunham
 George T. Dunham, Surveyor