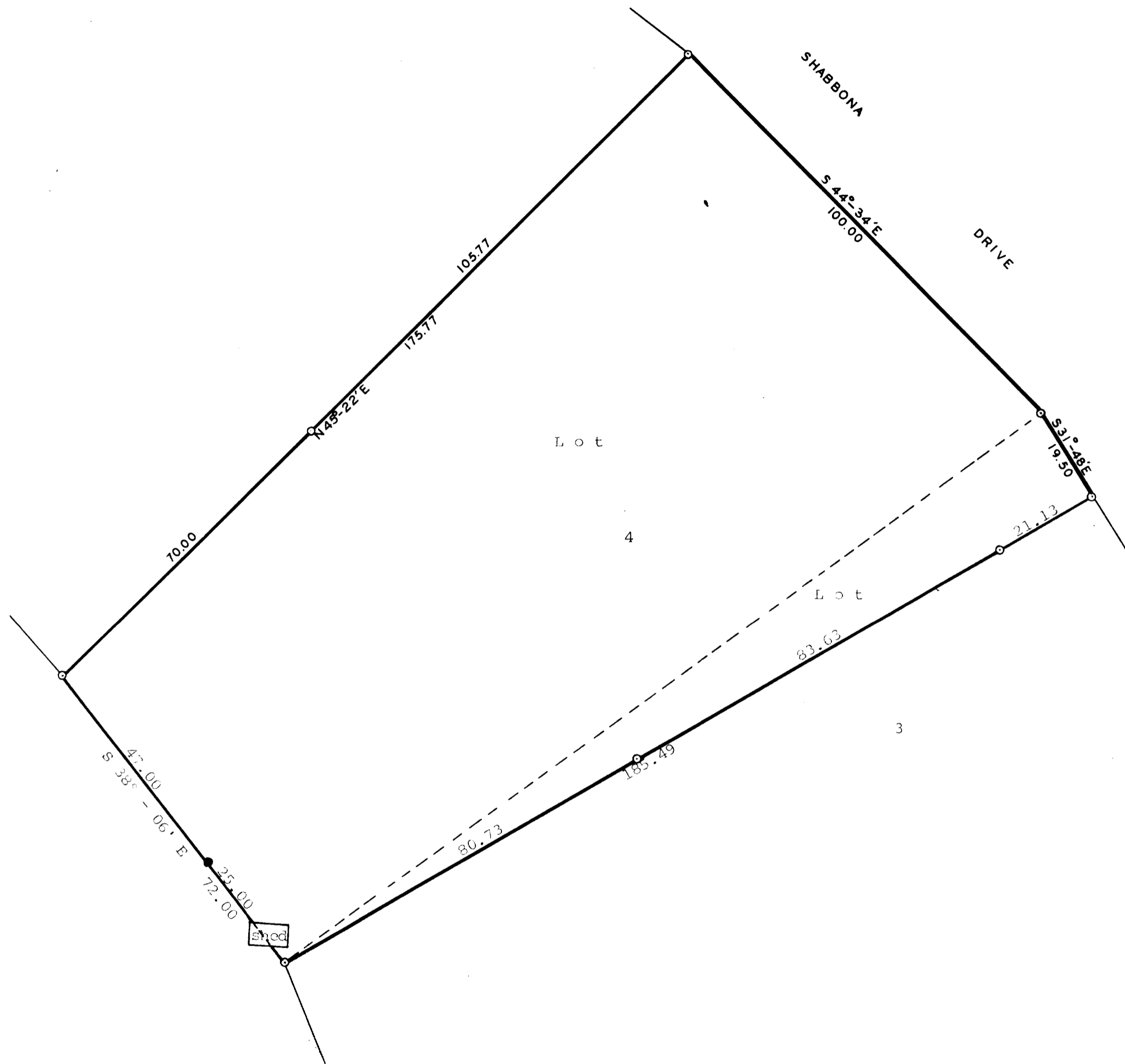


GEORGE T. DUNHAM
 SURVEYING & SUBDIVIDING
 DELAVAN, WISCONSIN



Scale - 1" = 20'
 ○ = Iron Pipe
 ● = Concrete Monument

Plat of survey of Lot 4 and a part of Lot 3 located
 in Addition No. 1 to Country Club Estates, Village of
 Fontana, Walworth County, Wisconsin.
 August 25, 1966

George T. Dunham
 George T. Dunham, Surveyor

5-98

SCT-4, 3