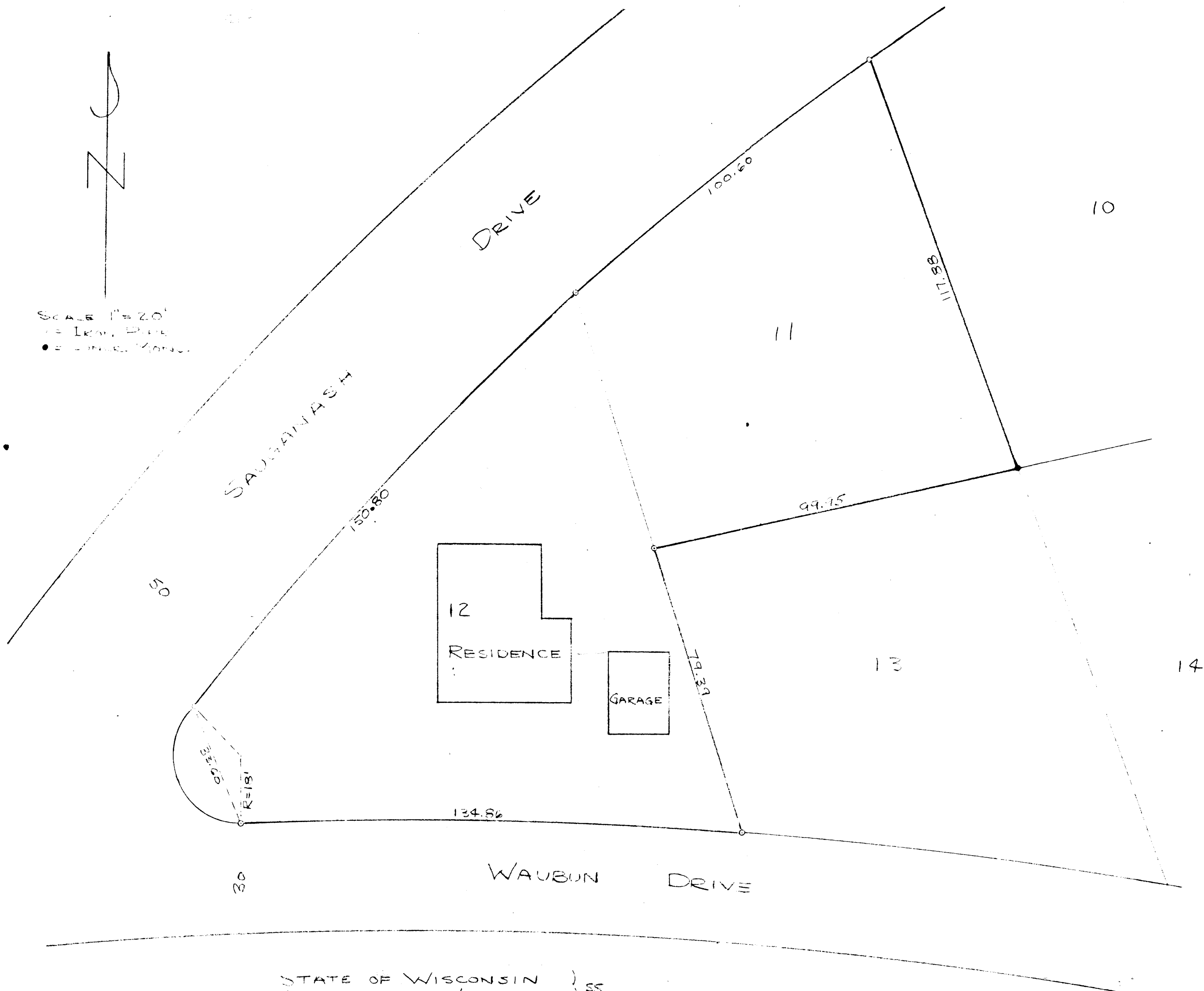


SCALE 1" = 20'  
1/8" = 100.00'  
• = Corner Monument



STATE OF WISCONSIN )  
COUNTY OF WALWORTH ) SS

I, LLOYD L. JENSEN, DO HEREBY CERTIFY THAT I HAVE SURVEYED THE PROPERTY DESCRIBED, ACCORDING TO THE OFFICIAL RECORDS, AS FOLLOWS:

LOTS 11 & 12 OF UNIT 2 OF COUNTRY CLUB ESTATES, A SUBDIVISION IN FONTANA - ON GENEVA LAKE, WALWORTH COUNTY, WISCONSIN, AND THAT THE PLAT SHOWN ABOVE IS A CORRECT REPRESENTATION OF THE LOT LINES AND THE PRINCIPAL LINES OF BUILDINGS TO BE LOCATED THEREON.

MAY 2, 1951

*Lloyd L. Jensen*  
COUNTY SURVEYOR