

GENEVA LAKE

BOAT HOUSE

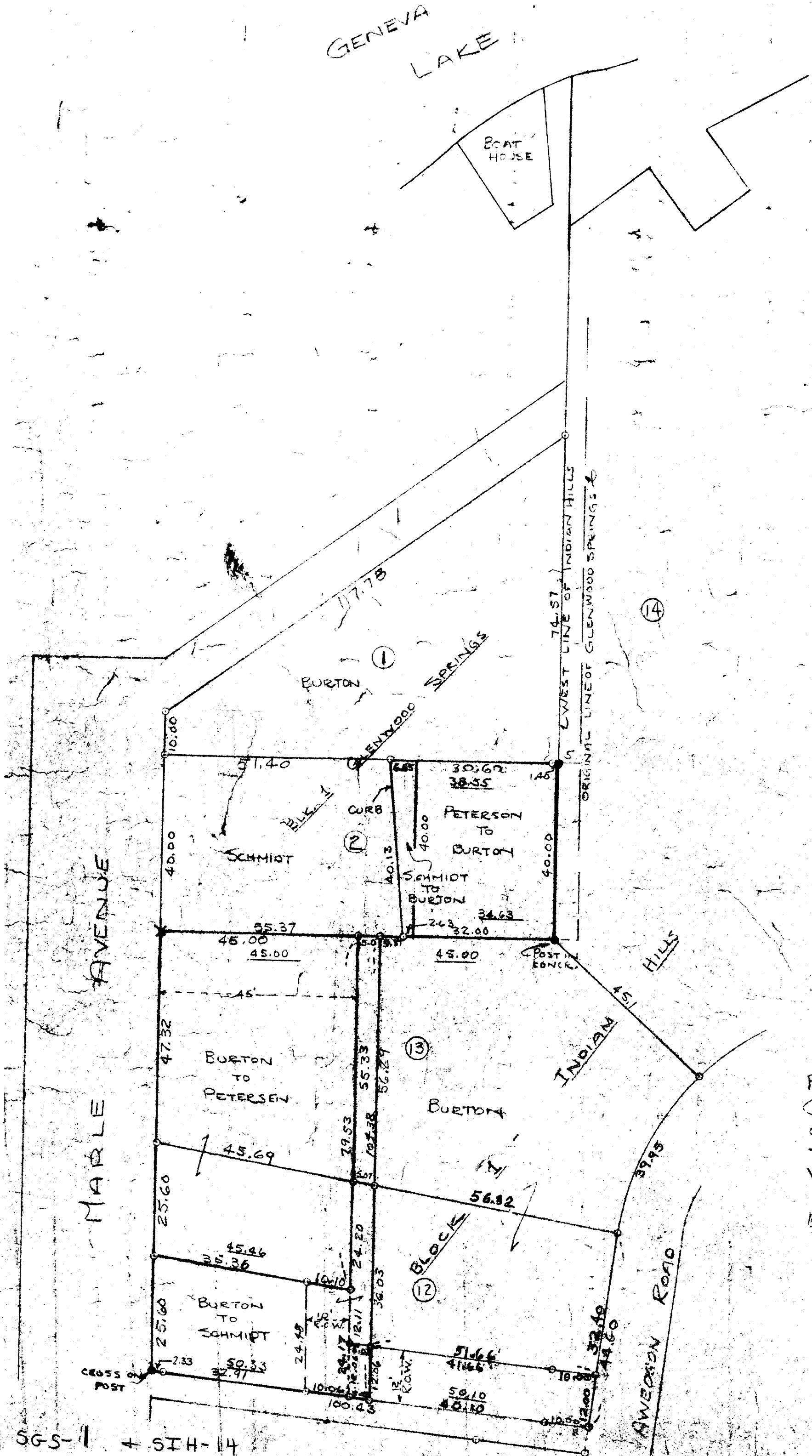


SCALE 1"=20'

O = IRON PIPE

X = CROSS IN CONCR.

• = POST



PLAT OF SURVEY OF LOTS 1 & 2 OF GLENWOOD SPRINGS AND LOTS 12 & 13 OF INDIAN HILLS, SUBDIVISIONS LOCATED IN THE VILLAGE OF FONTANA-ON-GENEVA LAKE, WALWORTH COUNTY, WISCONSIN.

AUGUST 1950

Floyd L. Jensen
COUNTY SURVEYOR

SGS-1 + SIH-14

5-72 J