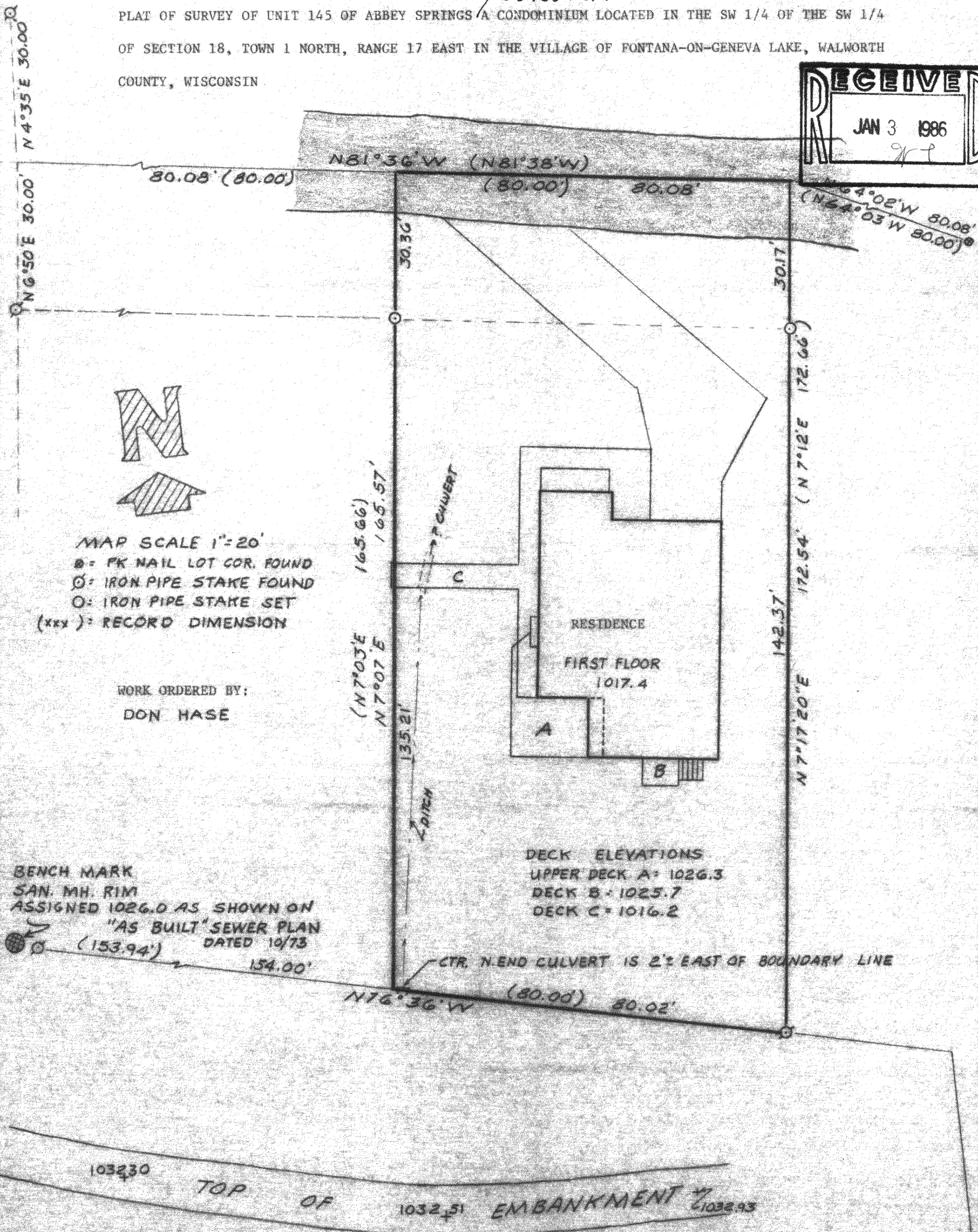
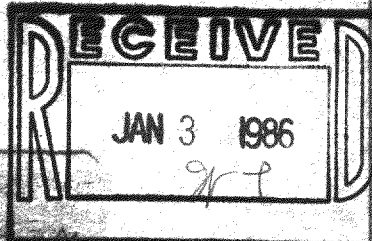


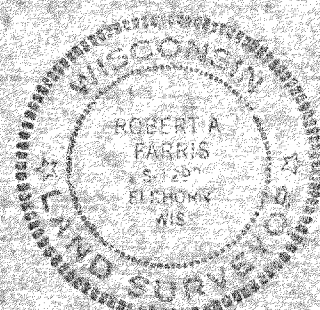
PLAT OF SURVEY OF UNIT 145 OF ABBEY SPRINGS CONDO No. 4 A CONDOMINIUM LOCATED IN THE SW 1/4 OF THE SW 1/4 OF SECTION 18, TOWN 1 NORTH, RANGE 17 EAST IN THE VILLAGE OF FONTANA-ON-GENEVA LAKE, WALWORTH COUNTY, WISCONSIN



I HEREBY CERTIFY THIS MAP IS A TRUE AND ACCURATE REPRESENTATION OF THE UNIT BOUNDARY LINES, THE LOCATION OF THE EXISTING RESIDENCE, AND OF THE RELATIVE ELEVATIONS SHOWN TO THE BEST OF MY PROFESSIONAL KNOWLEDGE AND BELIEF.

Robert A. Farris, R.L.S.  
FARRIS, HANSEN & ASSOCIATES, INC.  
7 RIDGEWAY COURT  
ELKHORN, WI 53121

DATED THIS 5th DAY OF DECEMBER, 1985.



SCOR 4-145

PROJECT NUMBER 2514

5-630-F