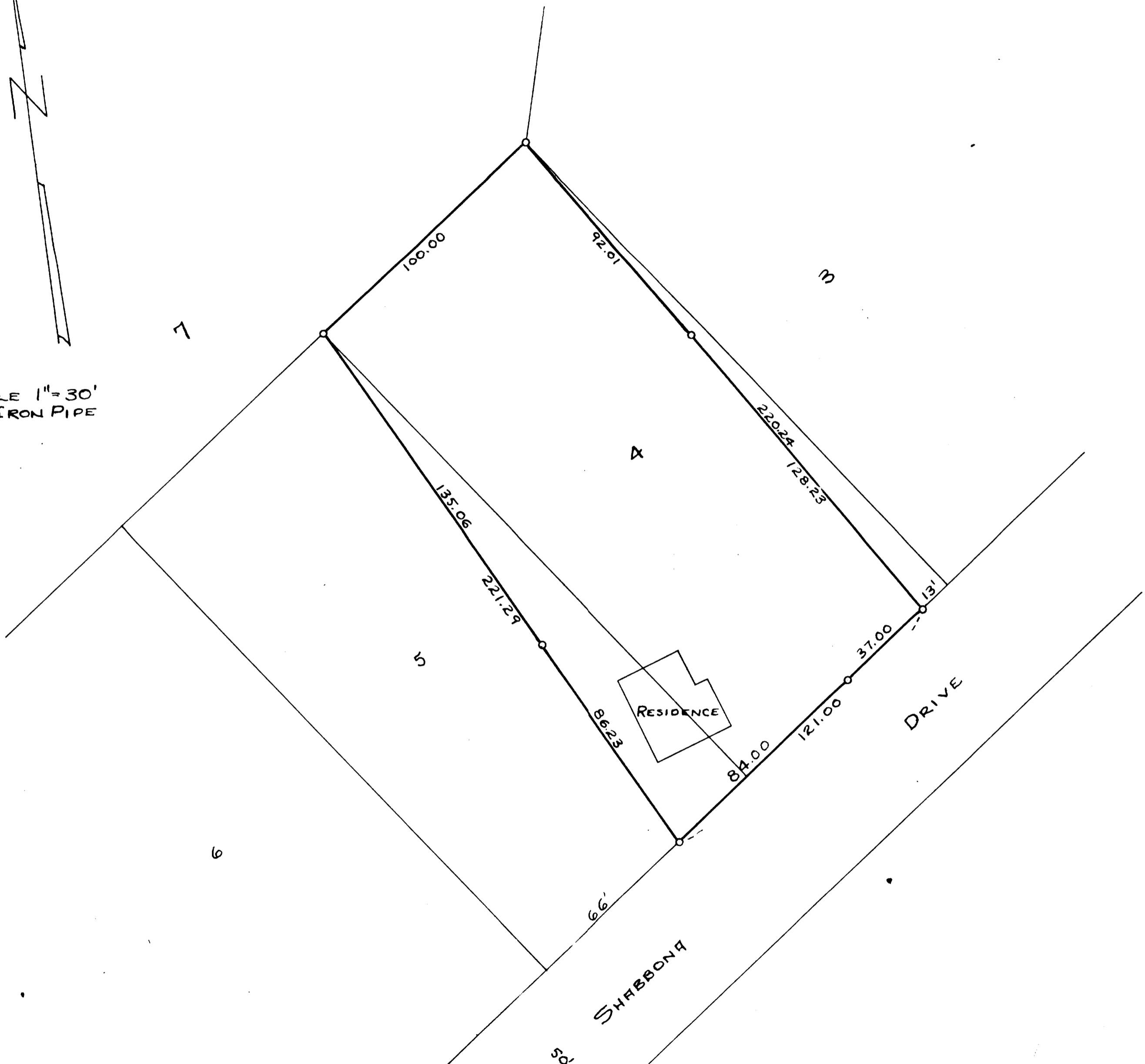




SCALE 1" = 30'
O = IRON PIPE



PLAT OF SURVEY OF PART OF LOTS 4 & 5 OF UNIT 1 OF
COUNTRY CLUB ESTATES IN THE VILLAGE OF FONTANA -
ON GENEVA LAKE, WALWORTH COUNTY, WISCONSIN.

AUGUST 1949

Lloyd L. Jensen
COUNTY SURVEYOR 5-53

SC01-6