

HOGANSON & ROBERS, INC.
CONSULTING ENGINEERS & LAND SURVEYORS

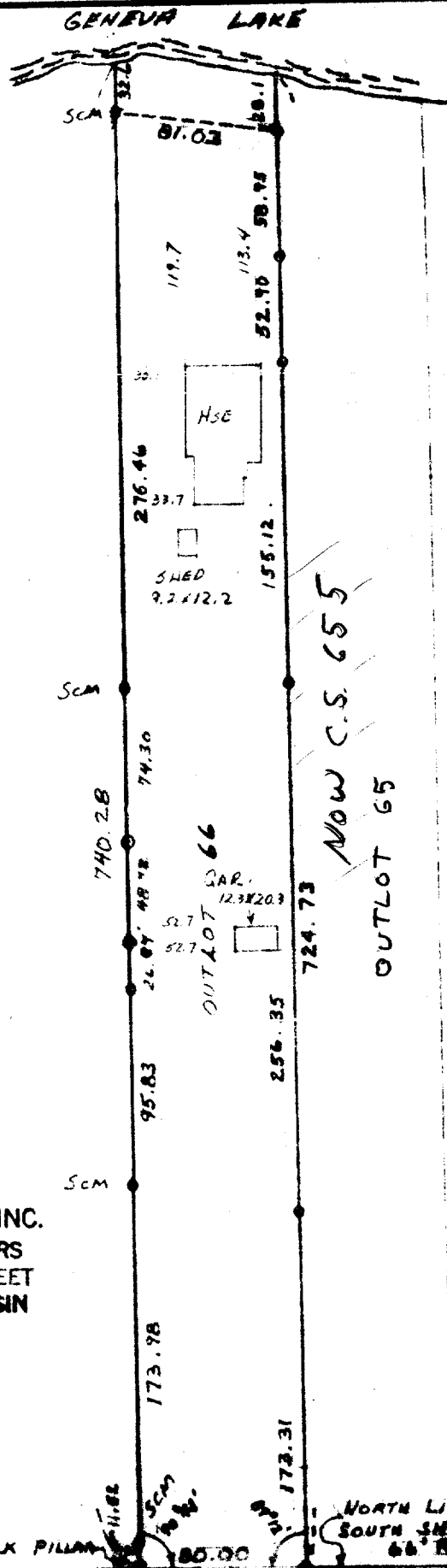
PHONE (414) 763-2652

116 E. CHESTNUT ST.

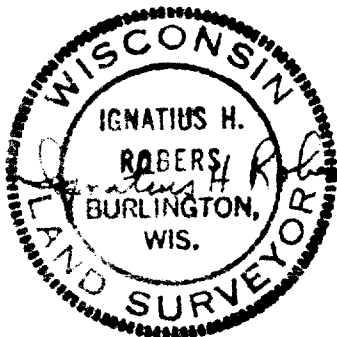
BURLINGTON, WIS. 53105

PLAT OF SURVEY

of
 the West 60 feet of the East 1 chain and 98.5
 links of West 1/2 of the Northwest fractional
 1/4 of Section 13, T 1 N., R16 E., also a strip
 of land 20 feet in width lying West of and ad-
 joining said 1 chain 98.5 links of West 1/2 of
 the Northwest 1/4 of Section 13, also known as
 Out Lot 66 of Assessor's Plat of the Village of
 Fontana-on-Geneva Lake.

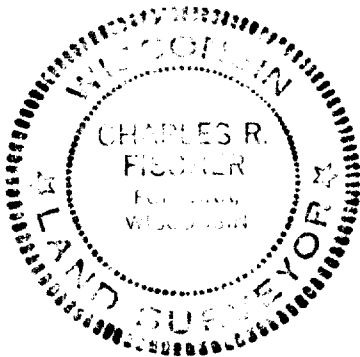


~ LEGEND ~
 ● FOUND CONC. MON.
 ○ FOUND IRON PIPE
 SCM SET CONC. MON.
 SCALE 1"=80'



REVISED JAN. 19, 1972

BY **ROBERS & FISCHER, INC.**
 CONSULTING ENGINEERS
 116 E. CHESTNUT STREET
 BURLINGTON, WISCONSIN



I HEREBY CERTIFY THAT WE HAVE SURVEYED THE LANDS DESCRIBED
 ABOVE ACCORDING TO OFFICIAL RECORDS AND THAT THE PLAT
 DRAWN HEREON IS A CORRECT REPRESENTATION OF SAID SURVEY.

Charles R. Fischer
 CHAS. R. FISCHER
 LAND SURVEYOR

DATE 12-13-68

R 72002

JOB NO. 6-9067

EV-106

Sur. # 5-446