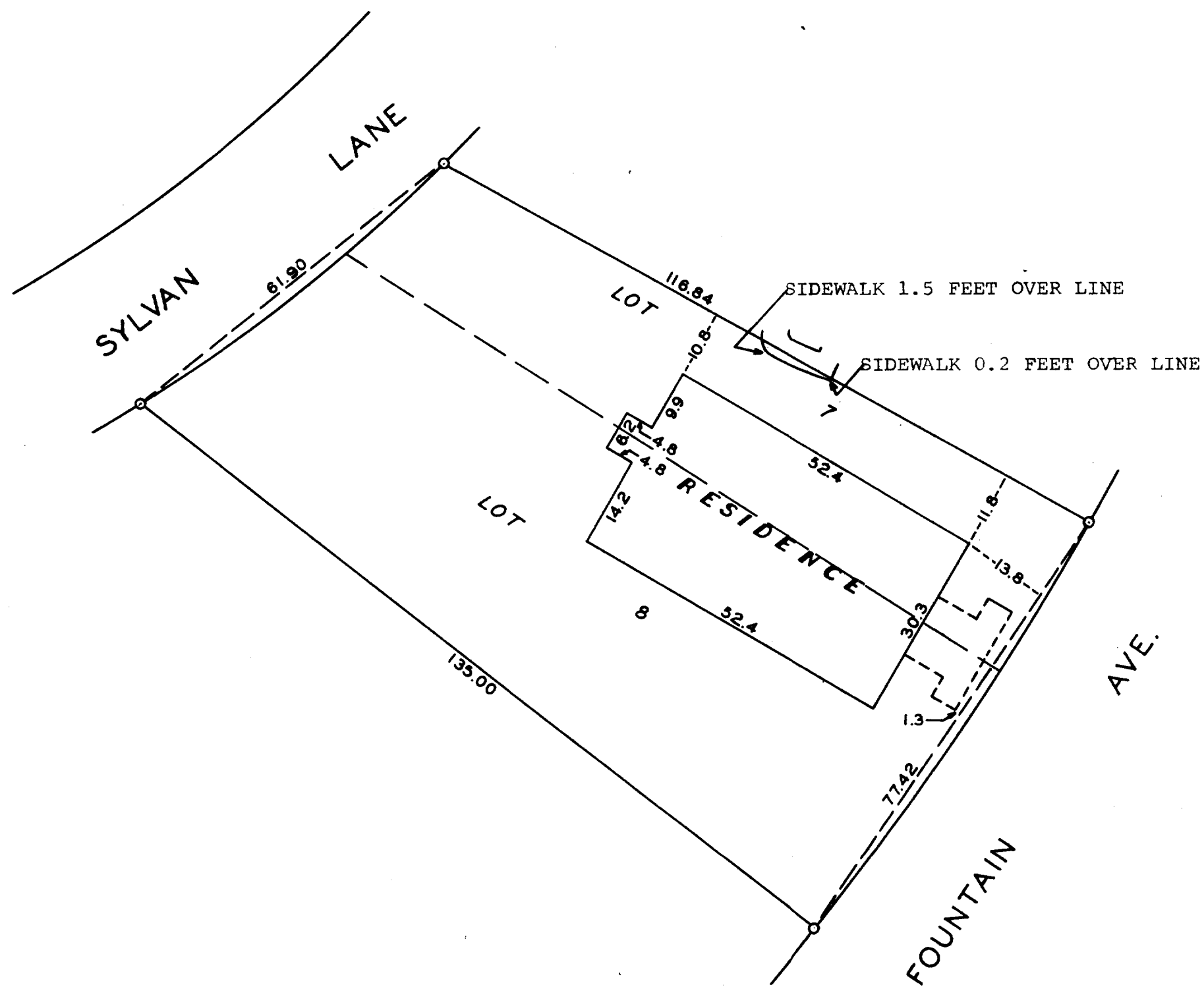


DUNHAM & RASMUSSEN
SURVEYING & ENGINEERING
DELAVAN, WISCONSIN



SCALE ~ 1" = 20'
O = IRON PIPE

Plat of survey of Lot 8 and a part of Lot 7 in Buena Vista Sub-
division, Village of Fontana, Walworth County, Wisconsin.
August 22, 1961

George T. Dunham
George T. Dunham, Surveyor