

PLAT OF SURVEY

OF

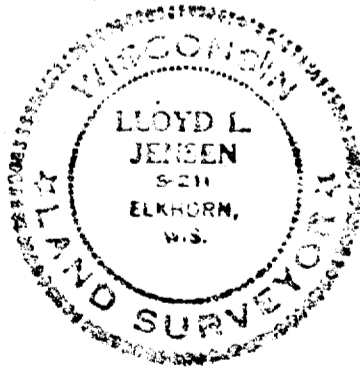
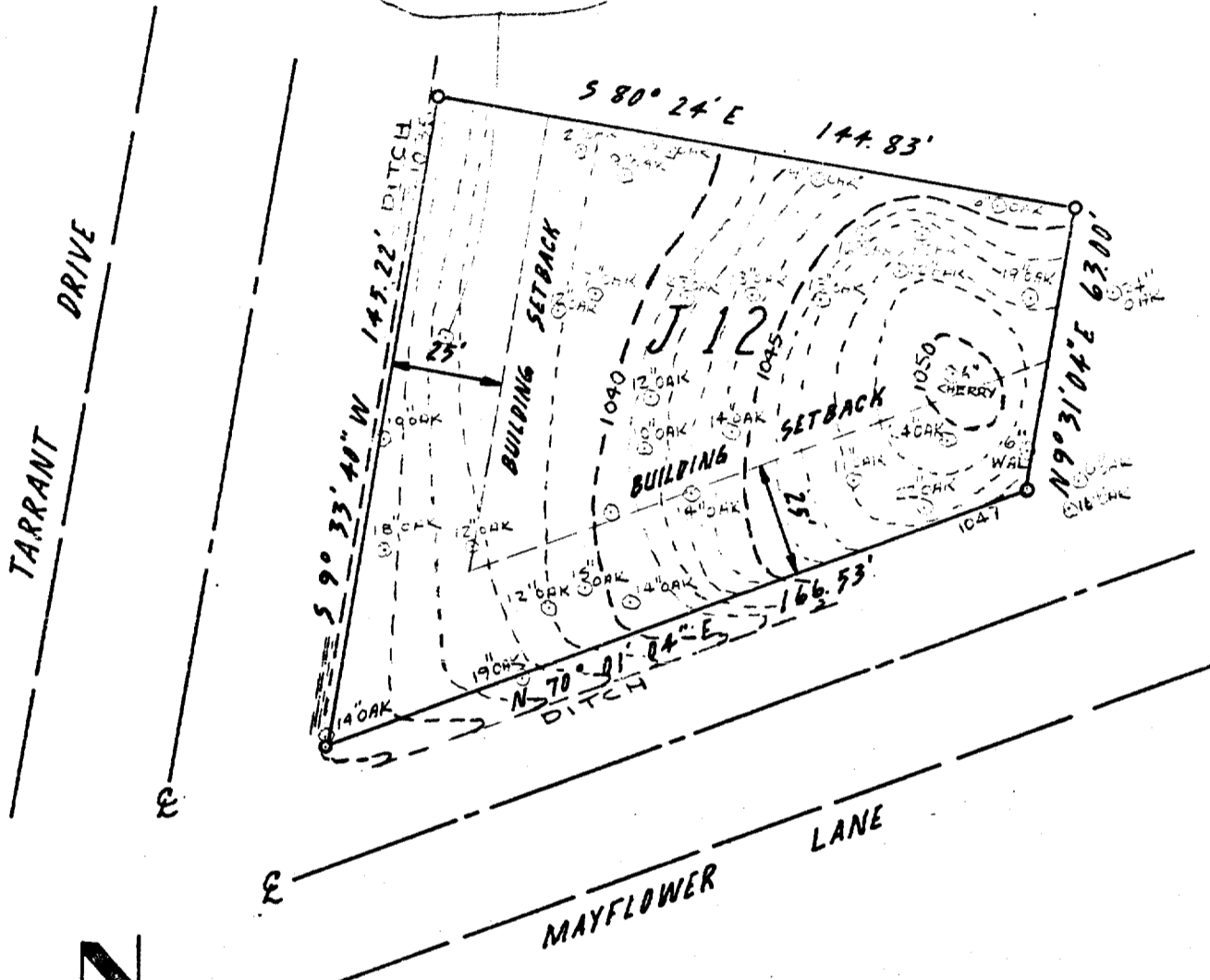
LOT J12 OF

COUNTRY CLUB ESTATES

ADDITION "J"; FONTANA-ON-GENEVA LAKE

WALWORTH COUNTY, WISCONSIN

BM #4 SPIKE IN
16" OAK
ELEV. 1037.95



SURVEY AND PLAT BY
JENSEN & JOHNSON, INC.
CIVIL ENGINEERS AND SURVEYORS
Elkhorn, Wisconsin

LEGEND

- — Iron Pipe
 - — Concrete Monument
- Scale 1" = 40'

WE CERTIFY: That we have surveyed the above described property and that the plat shown hereon is an accurate survey and a true representation thereof and correctly shows the exterior boundary lines and all divisions of said property.

Date MAY 1973

Lloyd L. Jensen
LLOYD L. JENSEN,

Wisconsin Registered Land Surveyor, No. S-211

SCTJ-12