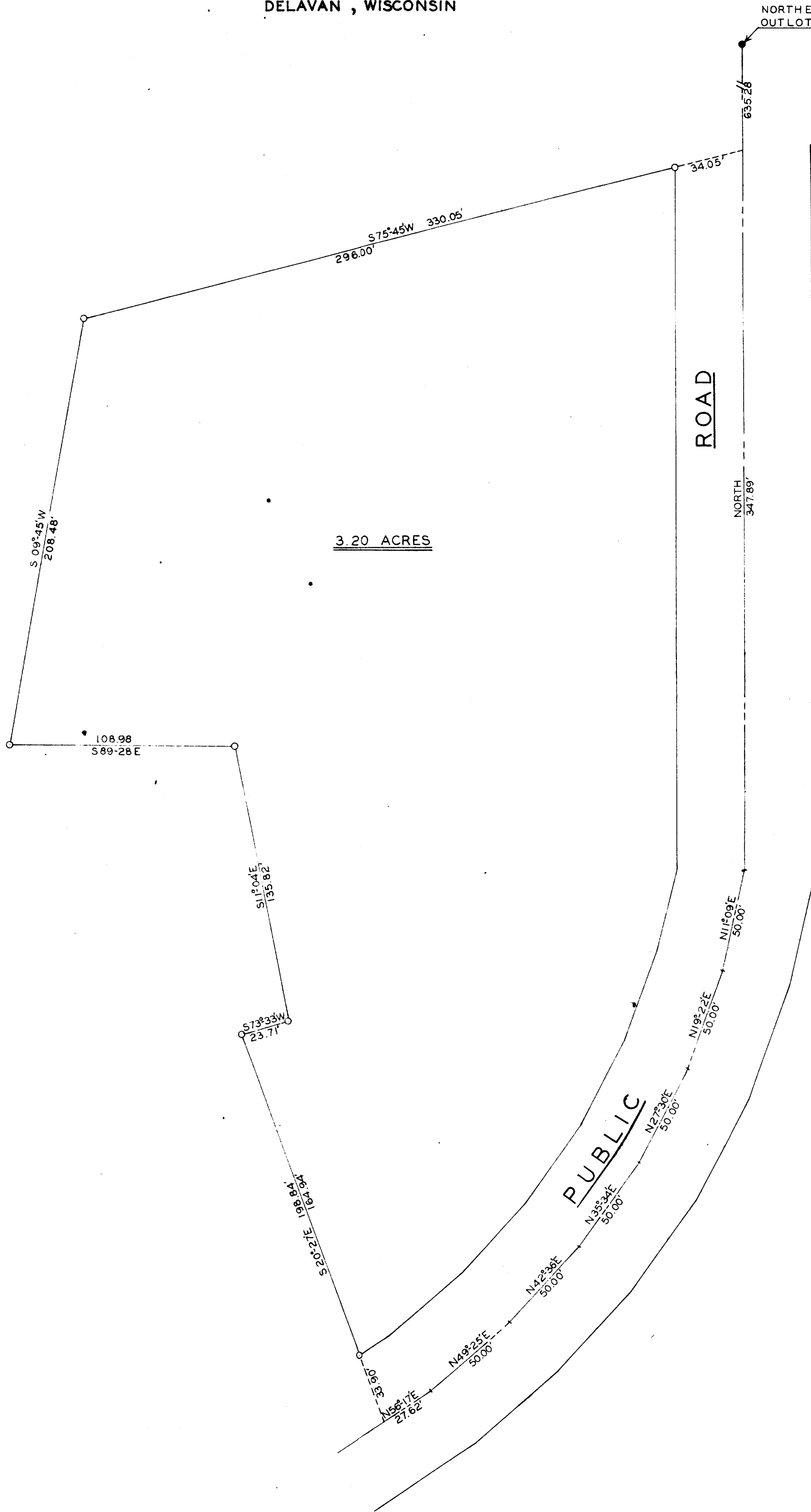


DUNHAM & RASMUSSEN  
 SURVEYING & ENGINEERING  
 DELAVAN, WISCONSIN

NORTHEAST CORNER OF  
 OUTLOT 21

N

SCALE: 1"=40'  
 O= IRON PIPE  
 ●= CONCRETE MONUMENT



A PLAT OF SURVEY OF A PARCEL OF LAND LO-  
 CATED IN OUTLOT 21, ASSESSOR'S PLAT NO. 1 OF THE  
 VILLAGE OF FONTANA, WALWORTH COUNTY, WISCONSIN.

*George J. Dunham*  
 GEORGE J. DUNHAM, SURVEYOR