

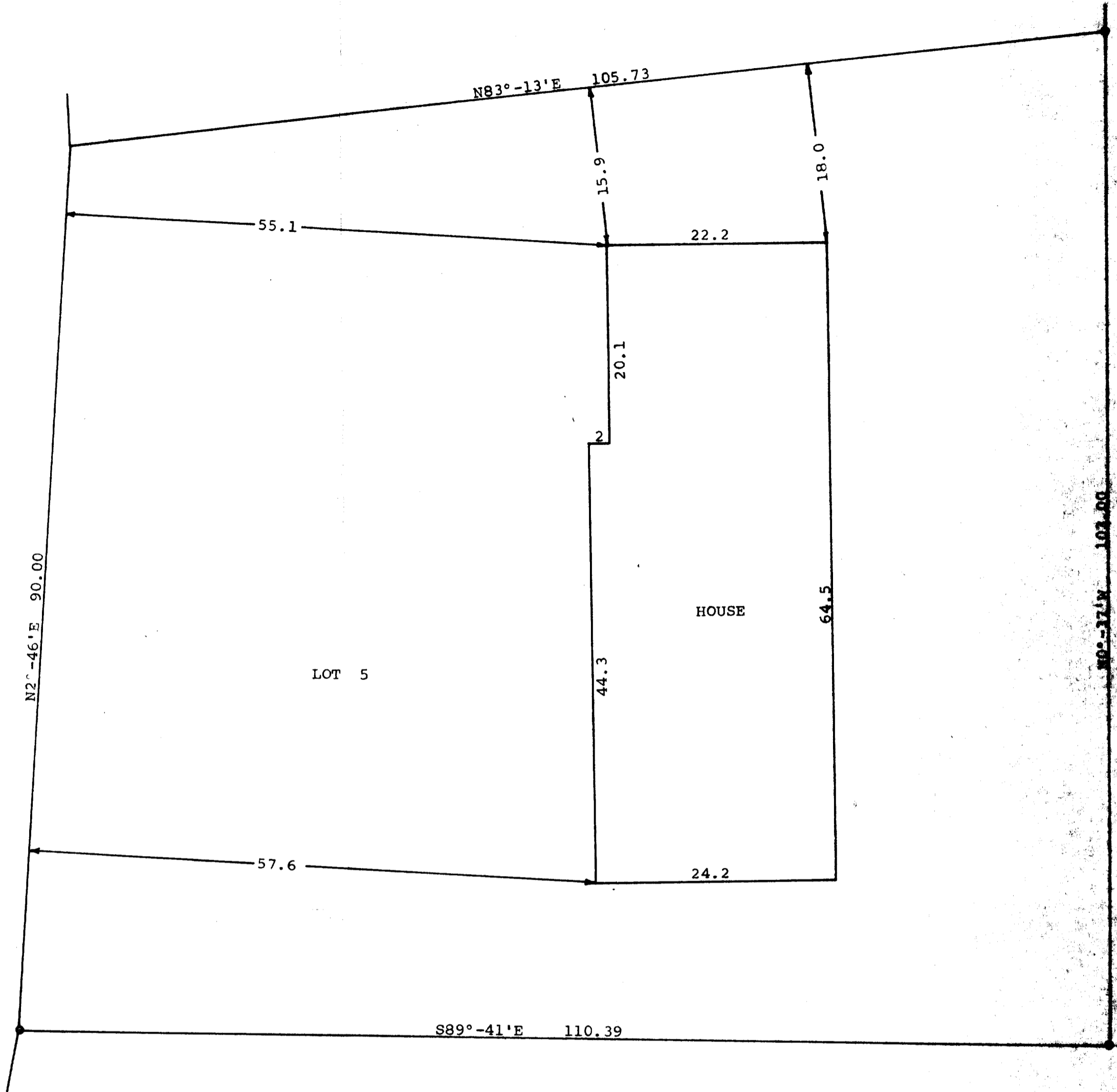
GEORGE T. DUNHAM
SURVEYING & SUBDIVIDING
DELAVAN, WISCONSIN

N



Scale - 1" = 10'
○ = Iron Pipe

FEATHERSTONE DRIVE



STATE OF WISCONSIN)SS
COUNTY OF WALWORTH)

I, George T. Dunham, Surveyor, certify that I have surveyed the property described as follows,

Lot 5 in Addition A to Country Club Estates, a subdivision located in the Village of Fontana on Geneva Lake, Walworth County, Wisconsin,

and that the above plat is an accurate survey and a true representation thereof and correctly shows the exterior boundary lines and location of buildings on said property and the correct measurements thereof.
January 5, 1972.

George T. Dunham
George T. Dunham, Surveyor

