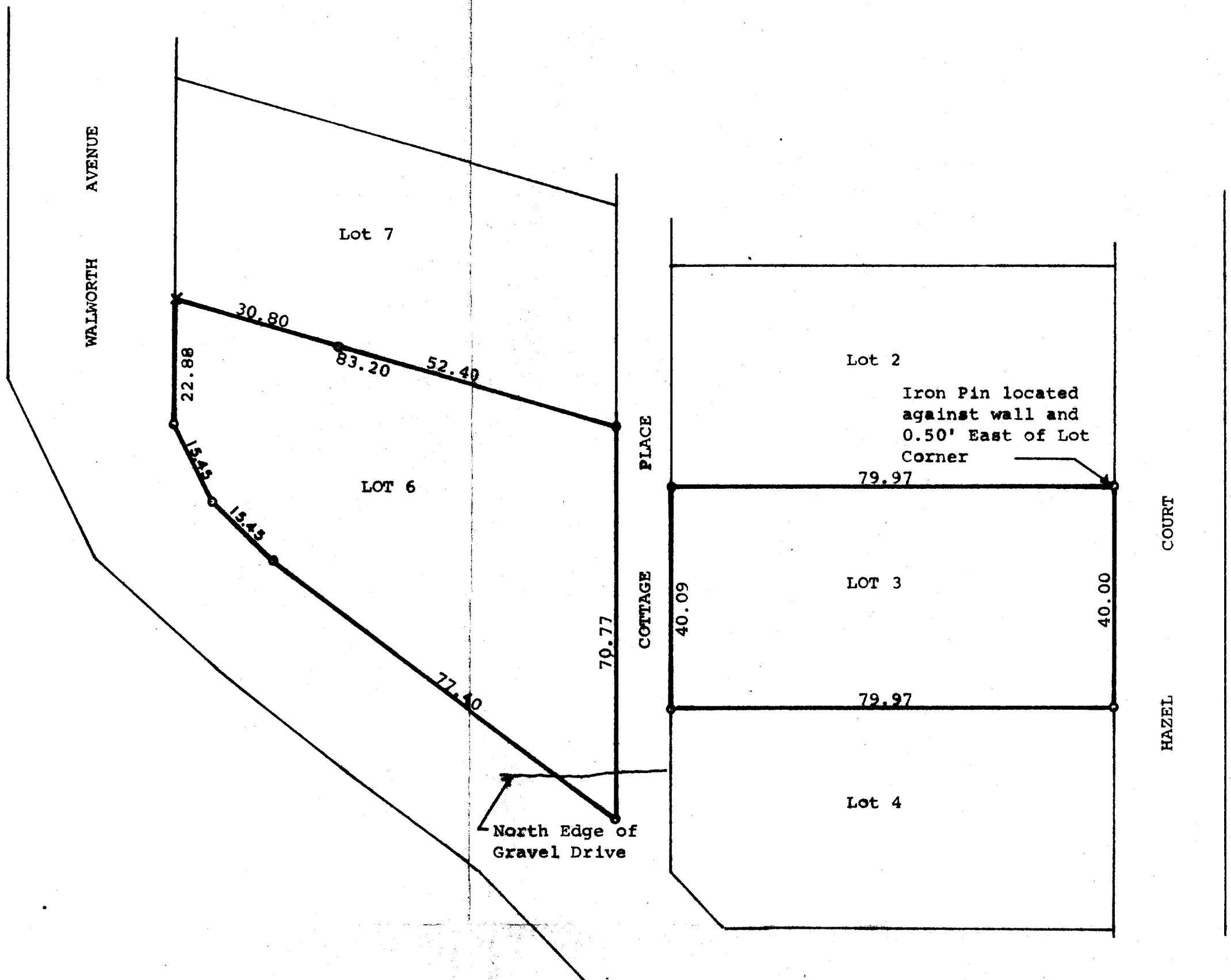


**GEORGE T. DUNHAM**  
 SURVEYING & SUBDIVIDING  
 DELAVAN, WISCONSIN

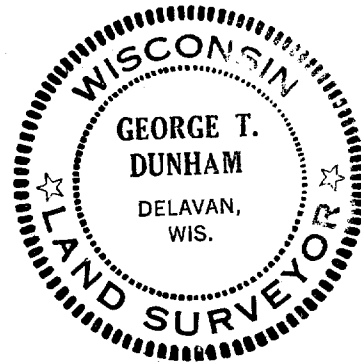
N

Scale - 1" = 20'  
 ○ = Iron Pipe or Rod



Plat of survey of Lots 3 and 6 in Block 8 of Glenwood Springs, a subdivision located in the Village of Fontana, Walworth County, Wisconsin.  
 August 3, 1972

*George T. Dunham*  
 George T. Dunham, Surveyor



5-254