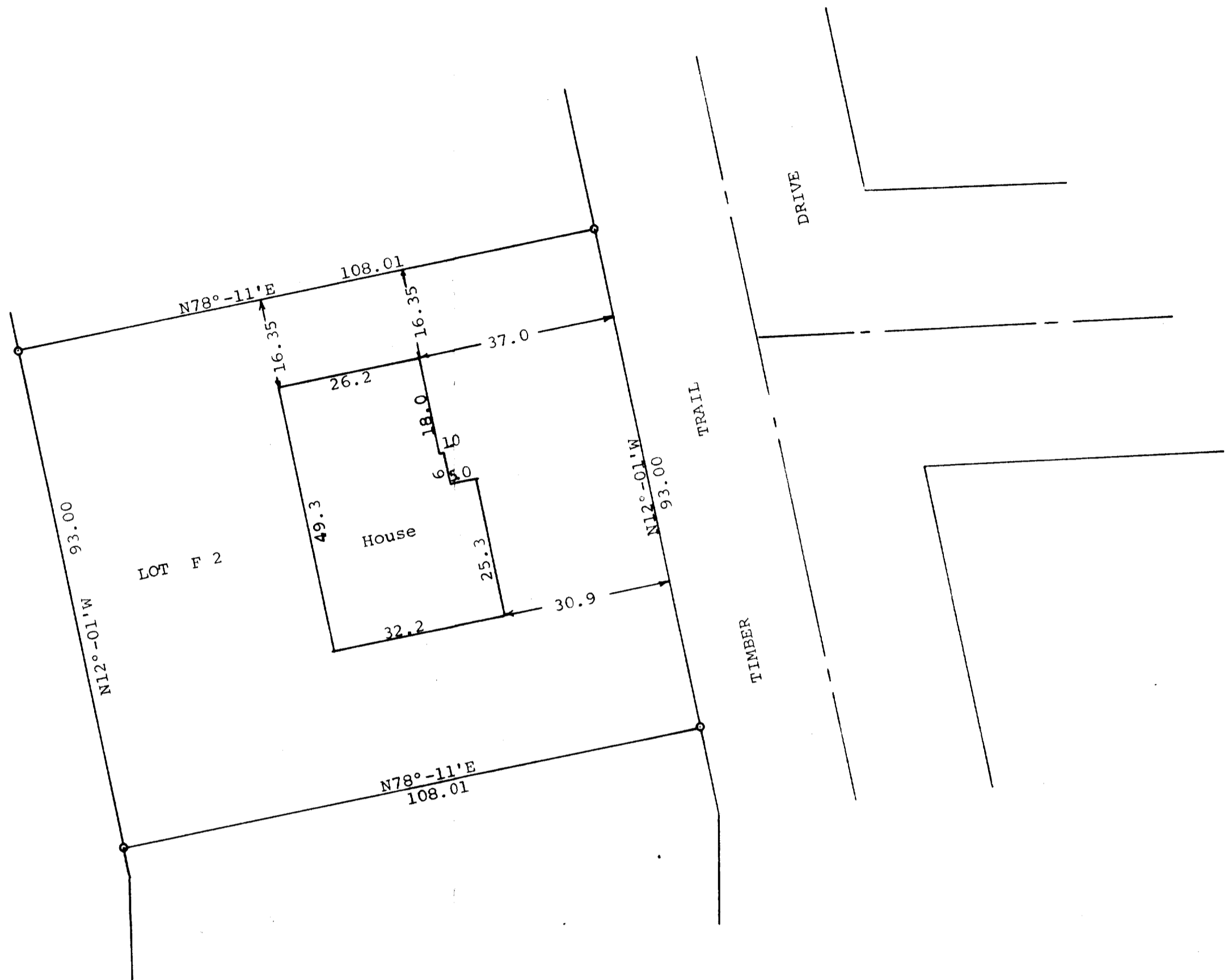


GEORGE T. DUNHAM  
SURVEYING & SUBDIVIDING  
DELAVAN, WISCONSIN

N

Scale - 1" = 20'  
○ = Iron Pipe

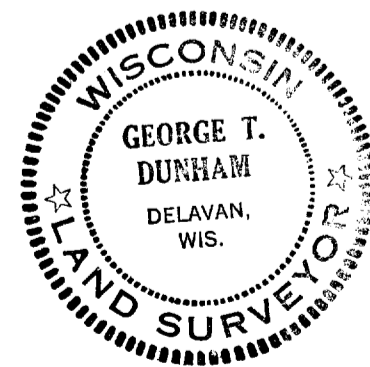


STATE OF WISCONSIN) SS  
COUNTY OF WALWORTH)

I, George T. Dunham, Surveyor, certify that I have surveyed the property described as follows,  
Lot F 2 in Addition F to Country Club Estates located in the Village of Fontana-on-Geneva-Lake, Walworth County, Wisconsin,

and that the above plat is an accurate survey and a true representation thereof and correctly shows the exterior boundary lines and location of buildings on said property and the correct measurements thereof.  
August 30, 1971

*George T. Dunham*  
George T. Dunham, Surveyor



5-253