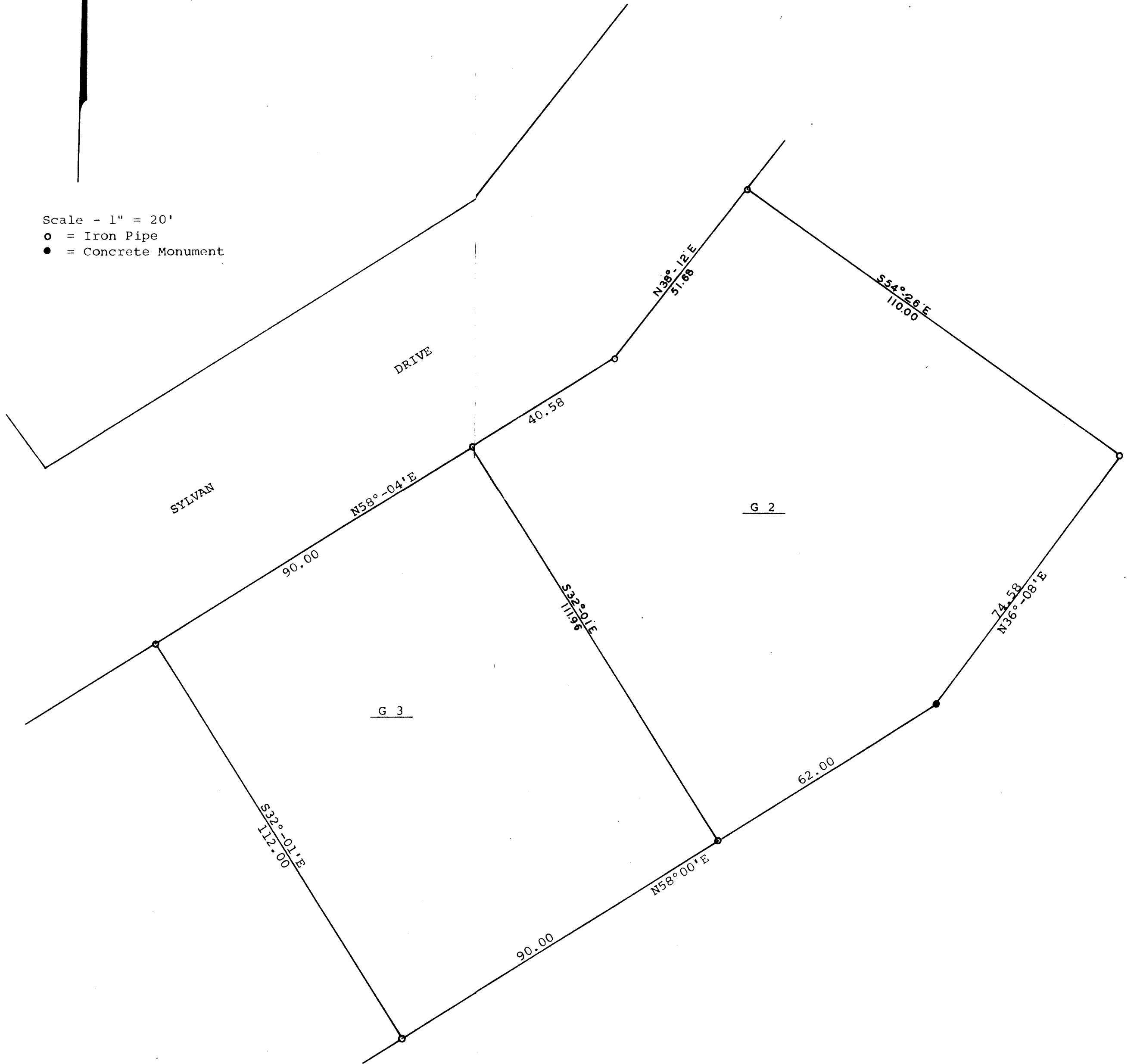


GEORGE T. DUNHAM
 SURVEYING & SUBDIVIDING
 DELAVAN, WISCONSIN

N



Scale - 1" = 20'
 ○ = Iron Pipe
 ● = Concrete Monument



Plat of survey of Lots G 2 and G 3 in Addition G
 to Country Club Estates, Village of Fontana, Walworth
 County, Wisconsin.
 August 12, 1971

George T. Dunham
 George T. Dunham, Surveyor

