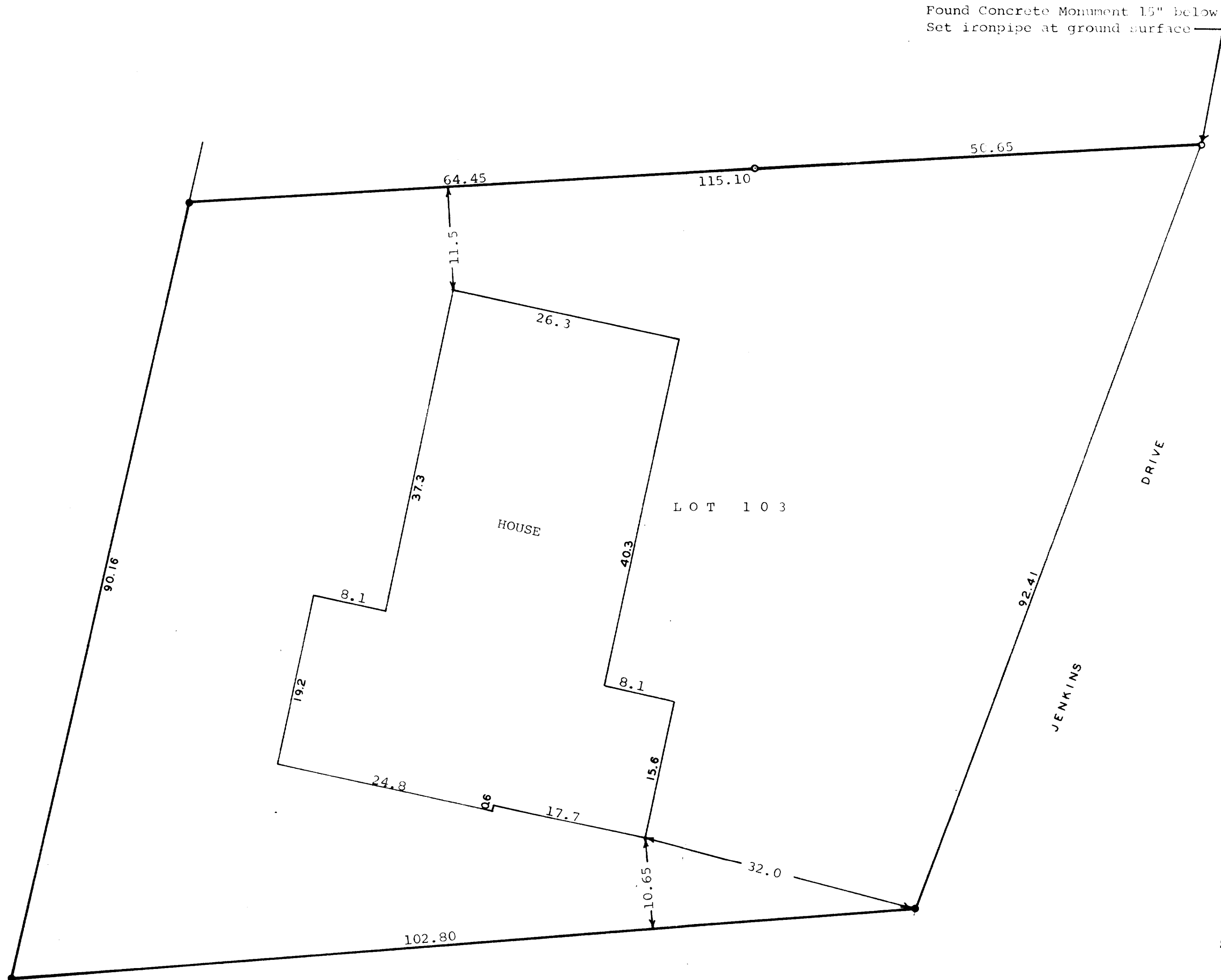


GEORGE T. DUNHAM
SURVEYING & SUBDIVIDING
DELAVER, WISCONSIN

Found Concrete Monument 15" below ground
Set ironpipe at ground surface



Scale - 1" = 10'
○ = Iron Pipe
● = Concrete Monument

STATE OF WISCONSIN) ss
COUNTY OF WALWORTH)

I, George T. Dunham, Surveyor, certify that I have surveyed the property described as follows,
Lot 103 of Country Club Estates Unit No. 2, located in the Village of Fontana on Geneva Lake, Walworth County, Wisconsin,
and that the above plat is an accurate survey and a true representation thereof and correctly shows the exterior boundary lines and location of buildings on said property and the correct measurements thereof.
July 14, 1971

George T. Dunham
George T. Dunham, Surveyor

