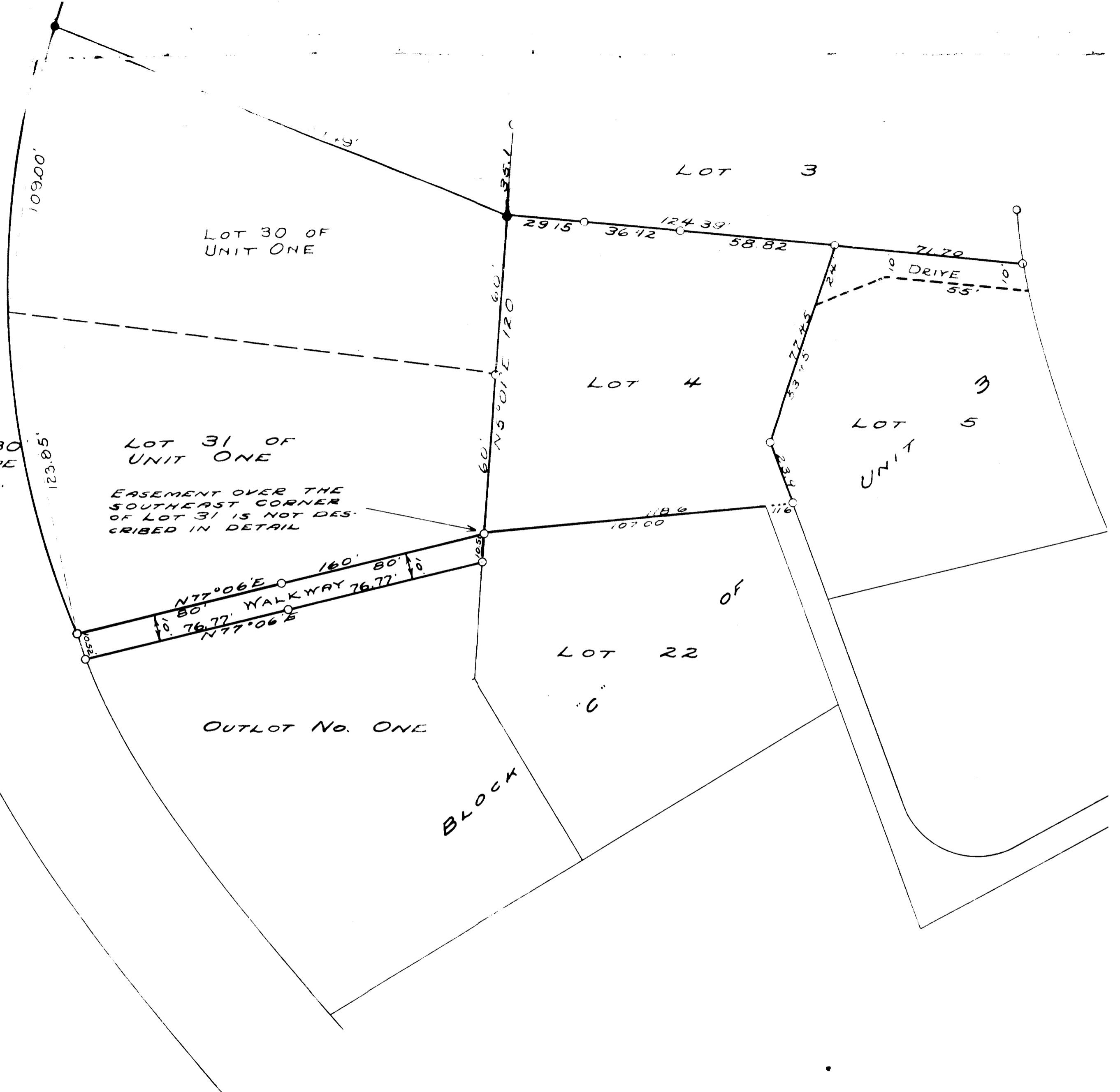


SCALE - 1" = 30'  
 ○ = IRON PIPE  
 ● = CONC. MONU.



PLAT OF SURVEY OF PART OF OUTLOT 1, AND LOT 5 AND OF ALL OF LOT 4, ALL IN BLOCK C OF UNIT 3 OF COUNTRY CLUB ESTATES, IN THE VILLAGE OF FONTANA-ON-GENEVA LAKE, WALWORTH COUNTY, WISCONSIN.

SEPTEMBER 26, 1941

SURVEY AND PLAT OF LOTS 30 AND 31 OF UNIT NO. I OF COUNTRY CLUB ESTATES MADE DECEMBER 21, 1948.

*Lloyd L. Jensen*  
 COUNTY SURVEYOR