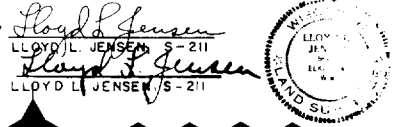


PLAT OF SURVEY  
OF  
PROPERTY OWNED BY BIG FOOT CORPORATION

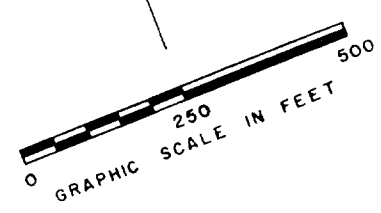
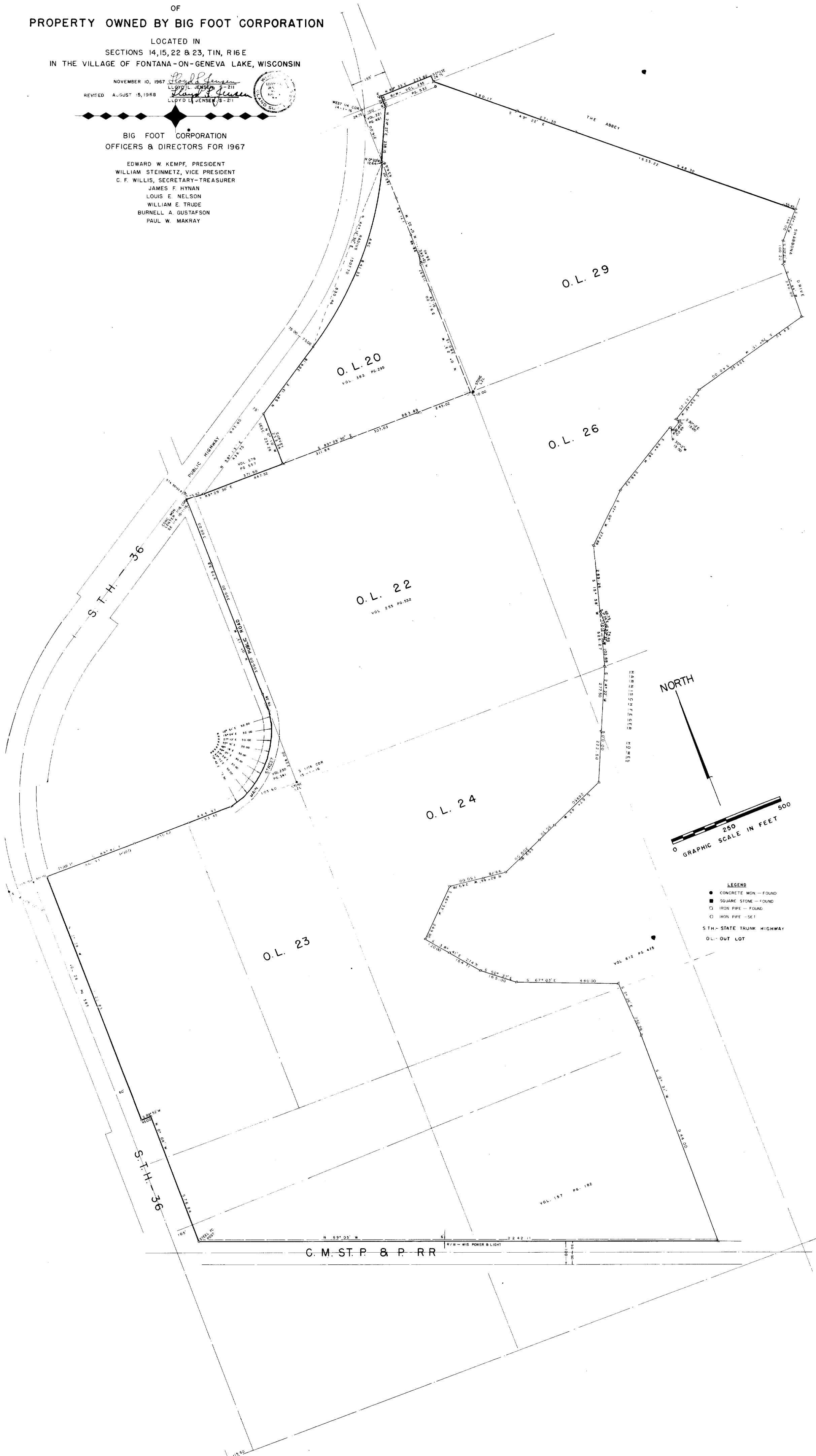
LOCATED IN  
SECTIONS 14, 15, 22 & 23, T1N, R16E  
IN THE VILLAGE OF FONTANA-ON-GENEVA LAKE, WISCONSIN

NOVEMBER 10, 1967  
REVISED AUGUST 15, 1968



BIG FOOT CORPORATION  
OFFICERS & DIRECTORS FOR 1967

EDWARD W. KEMPF, PRESIDENT  
WILLIAM STEINMETZ, VICE PRESIDENT  
C. F. WILLIS, SECRETARY-TREASURER  
JAMES F. HYNAN  
LOUIS E. NELSON  
WILLIAM E. TRUDE  
BURNELL A. GUSTAFSON  
PAUL W. MAKRAY



- LEGEND
- CONCRETE MON. - FOUND
  - SQUARE STONE - FOUND
  - IRON PIPE - FOUND
  - IRON PIPE - SET
  - S.T.H. - STATE TRUNK HIGHWAY
  - O.L. - OUT LOT

ST FV-34  
ST FV-35  
43

and w 22-34

5-198J ~~023-52~~