

ROBERS & FISCHER, INC.
CONSULTING ENGINEERS & LAND SURVEYORS

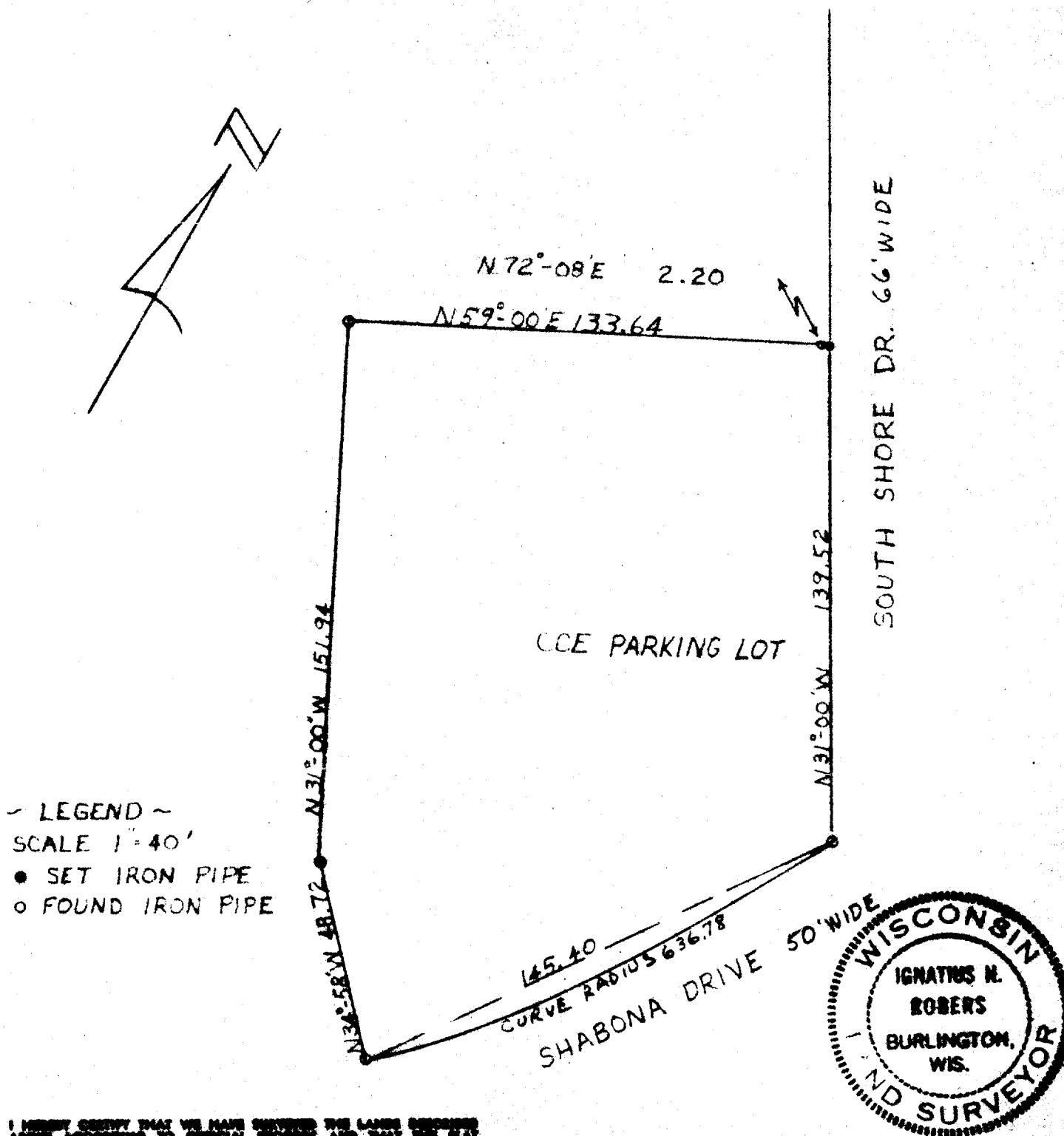
PHONE (414) 763-2652

116 E. CHESTNUT ST.

BURLINGTON, WIS. 53105

Plat of Survey

Part of Lot 1, Unit 1, Country Club Estates Subdivision Fontana-on-Geneva
Lake, Walworth County, Wisconsin.



~ LEGEND ~

SCALE 1" = 40'

- SET IRON PIPE
- FOUND IRON PIPE

I HEREBY CERTIFY THAT WE HAVE SURVEYED THE LAND DESCRIBED
HEREIN ACCORDING TO GENERAL SURVEYING AND THAT THE
BEARINGS AND DISTANCES ARE A CORRECT REPRESENTATION OF THE TRUTH.

Ignatius H. Rober
WISCONSIN LAND SURVEYOR
500787

DATE 3-1-71

5-137

JOB NO. 70156