

GEORGE T. DUNHAM  
SURVEYING & SUBDIVIDING  
DELAVAN, WISCONSIN

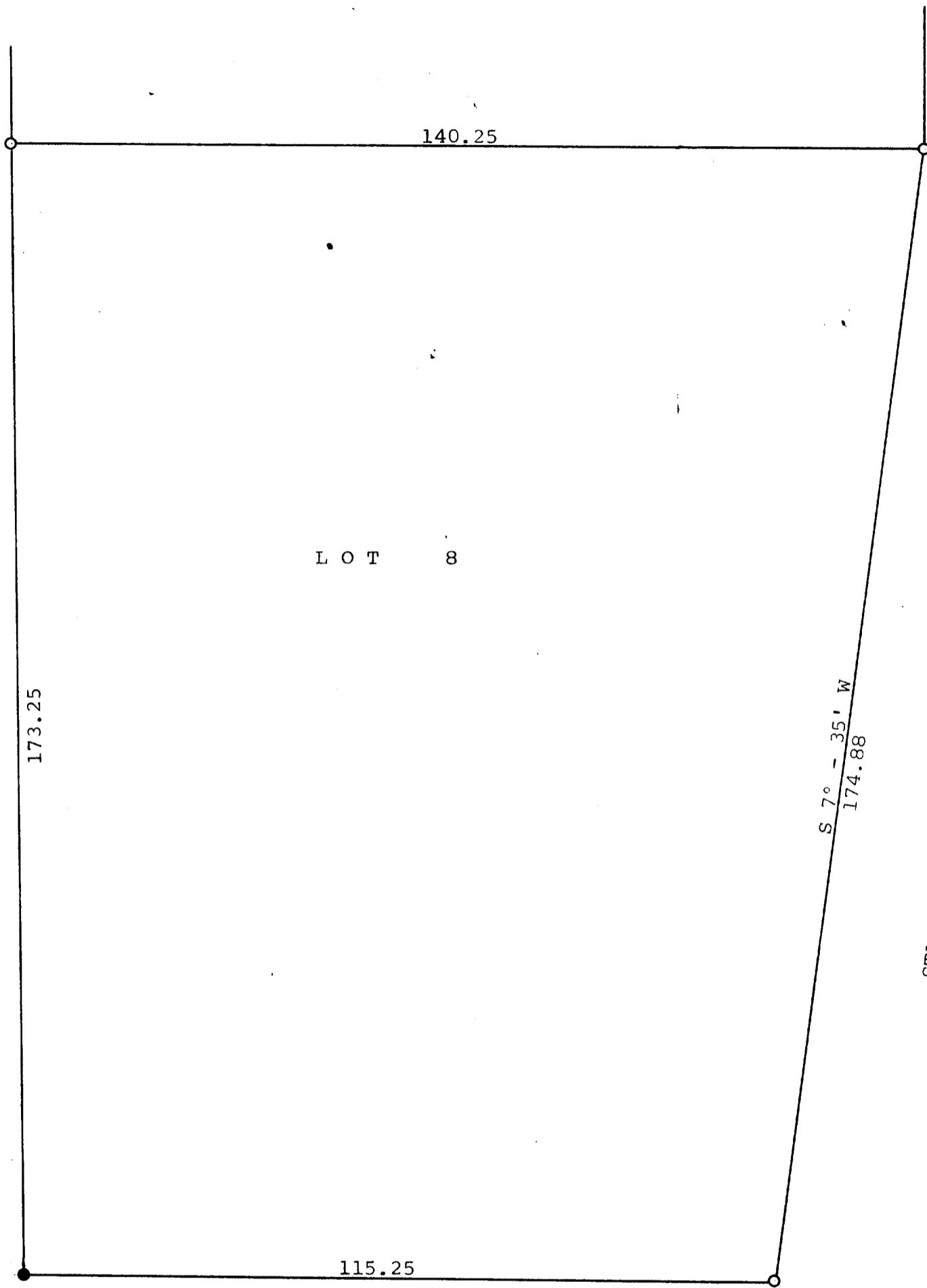
N



Scale - 1" = 20'  
○ = Iron Pipe  
● = Concrete Monument

STREET

MILL



STATE TRUNK HIGHWAY NO. 36

DEWEY

AVENUE

Plat of survey of Lot 8, Block 3, C. L. Douglas Subdivision, Part of Assessor's Plat No. 1, Village of Fontana, Walworth County, Wisconsin. August 21, 1969

*George T. Dunham*  
George T. Dunham, Surveyor

5-122

STFV-203