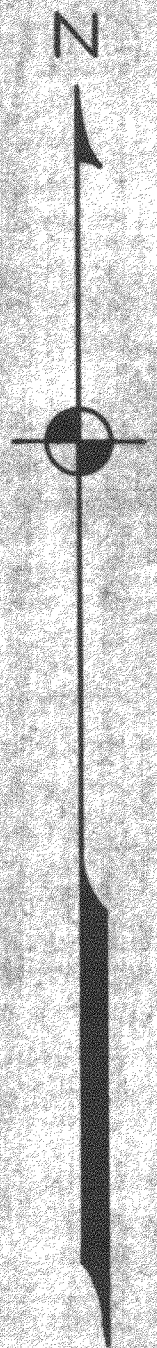
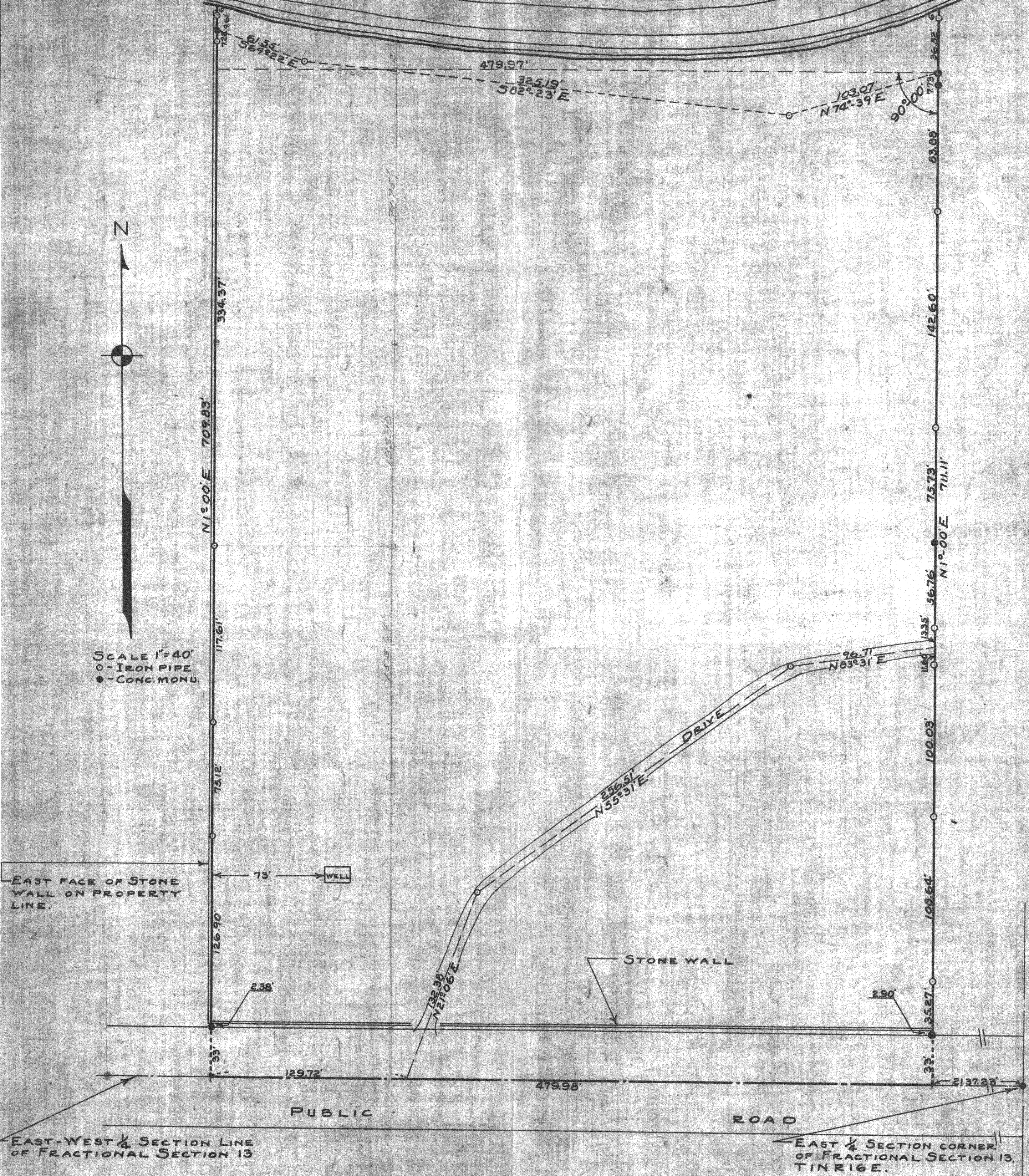


GENEYA

LAKE



SCALE 1"=40'  
○- IRON PIPE  
●- CONC. MONU.



PLAT OF SURVEY OF LAND LOCATED IN THE NORTH  
1/2 OF FRACTIONAL SECTION 13, TIN RIDGE OF WALWORTH  
COUNTY WISCONSIN.  
OCT. 1940  
*Lloyd Jensen*  
COUNTY SURVEYOR

5-110

STFV-89, 90, 91 + 92