

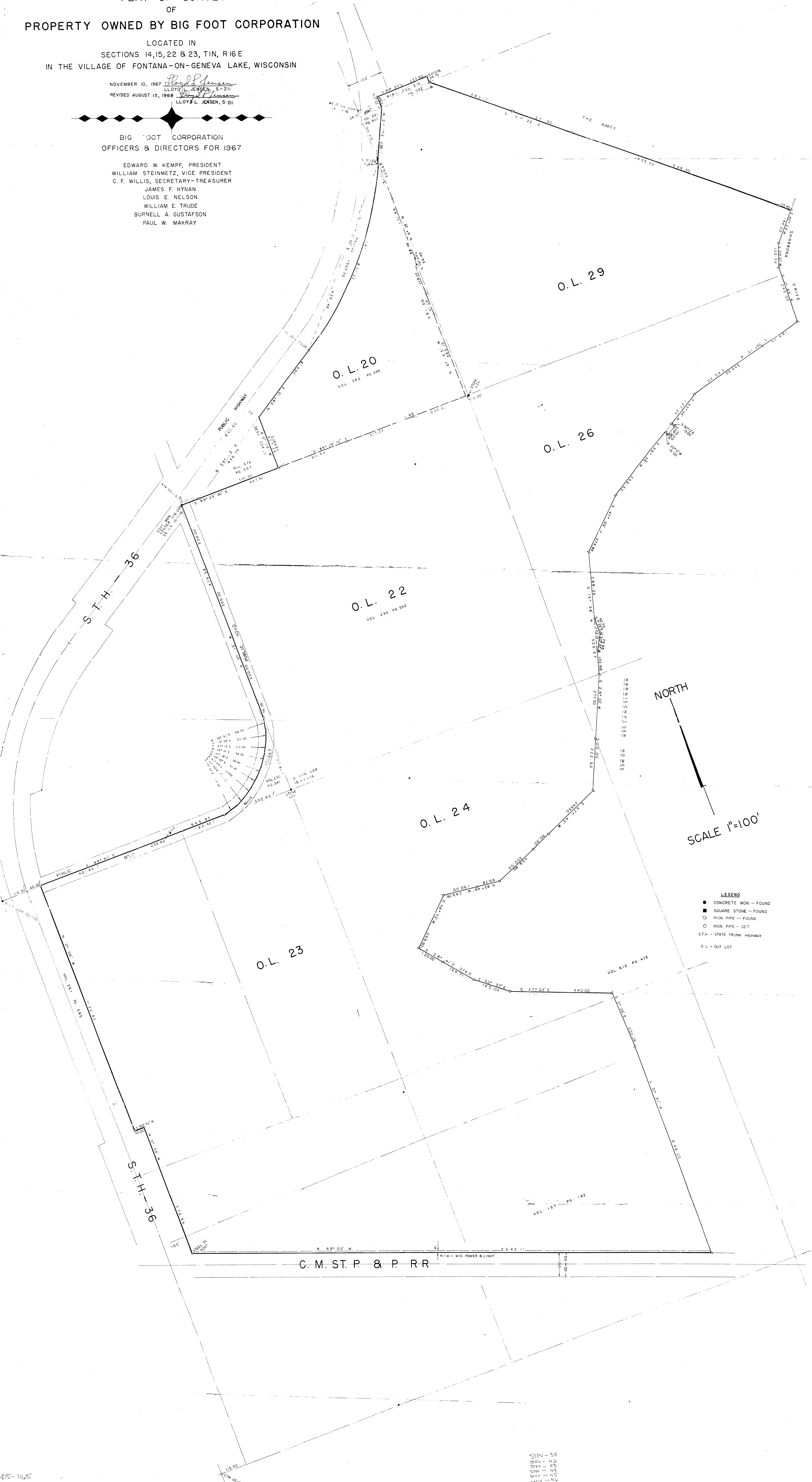
PLAT OF SURVEY
OF
PROPERTY OWNED BY BIG FOOT CORPORATION

LOCATED IN
SECTIONS 14, 15, 22 & 23, T1N, R16E
IN THE VILLAGE OF FONTANA-ON-GENEVA LAKE, WISCONSIN

NOVEMBER 10, 1967
LLOYD L. JENSEN, S-211
REVISED AUGUST 15, 1968
LLOYD L. JENSEN, S-211

BIG FOOT CORPORATION
OFFICERS & DIRECTORS FOR 1967

EDWARD W. KEMPF, PRESIDENT
WILLIAM STEINMETZ, VICE PRESIDENT
C. F. WILLIS, SECRETARY-TREASURER
JAMES F. HYNAN
LOUIS E. NELSON
WILLIAM E. TRUDE
BURNELL A. GUSTAFSON
PAUL W. MAKRAY



- LEGEND**
- CONCRETE MON. — FOUND
 - SQUARE STONE — FOUND
 - IRON PIPE — FOUND
 - IRON PIPE — SET
 - ST.H. - STATE TRUNK HIGHWAY
 - O.L. - OUT LOT

SFN - 34
SFN - 42
SFN - 43
SFN - 44
SFN - 45
SFN - 46