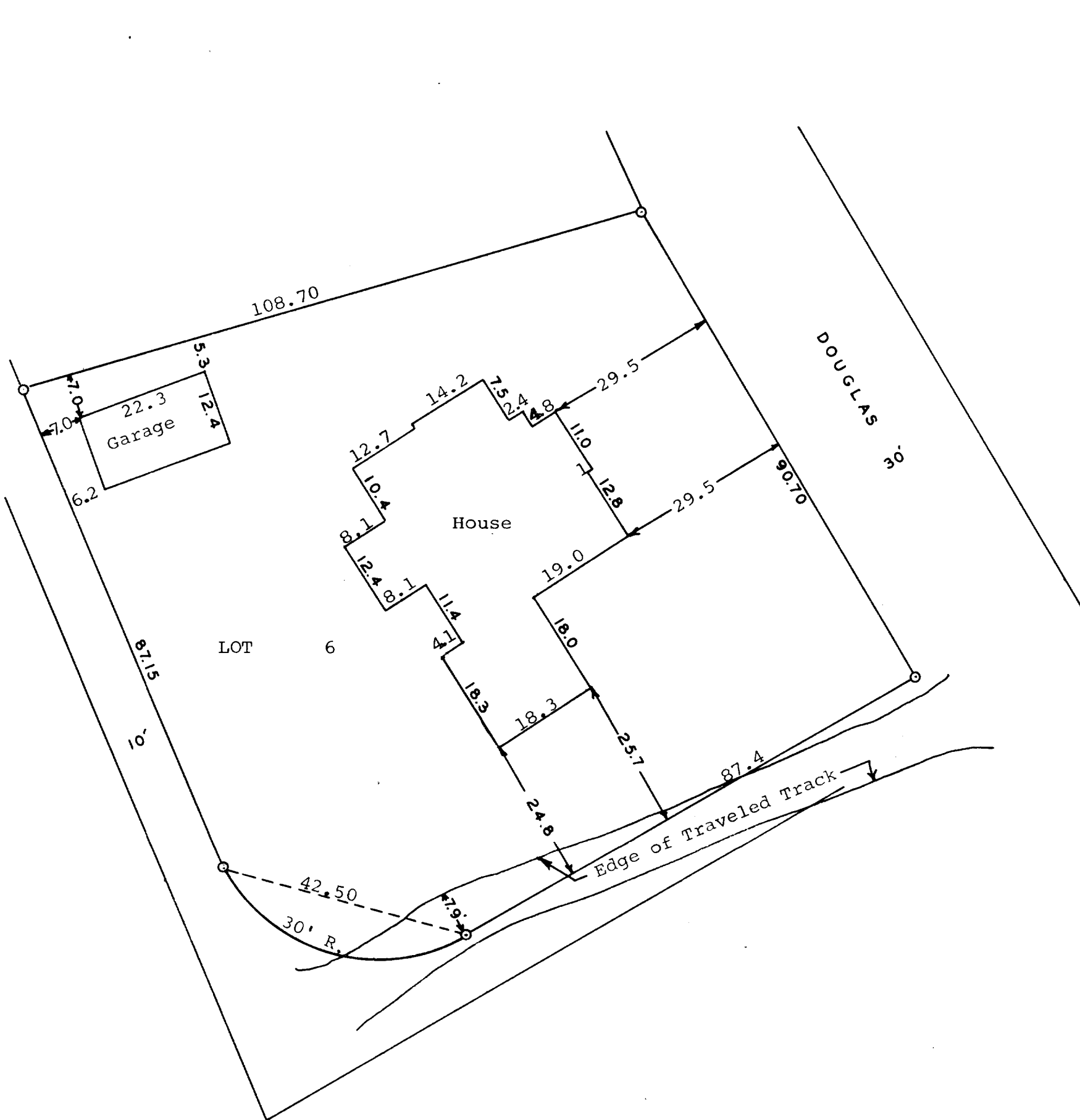


GEORGE T. DUNHAM  
SURVEYING & SUBDIVIDING  
DELAVER, WISCONSIN



N

Scale - 1" = 20'  
O = Iron Pipe

STATE OF WISCONSIN) SS  
WALWORTH COUNTY )

I, George T. Dunham, Surveyor, certify that I have surveyed the property described as follows,  
Lot 6, Block "C" in Country Club Estates Subdivision  
Unit No. 3, located in the Village of Fontana, Walworth County, Wisconsin.

and the above plat is an accurate survey and a true representation thereof and correctly shows the exterior boundary lines and location of buildings on said property and the correct measurements thereof.  
July 25, 1968

*George T. Dunham*  
George T. Dunham, Surveyor

5-109

SC03-36