

85

Sept. 19 & 20,

Surveyed lots 1 & 2 B. 3,  
Glenwood Springs by request  
of Wm Best,

See record in Field Book  
#AAA, Page 55, & Blue Print  
6 original iron stks found  
on W. line Block 16, All  
O.K.

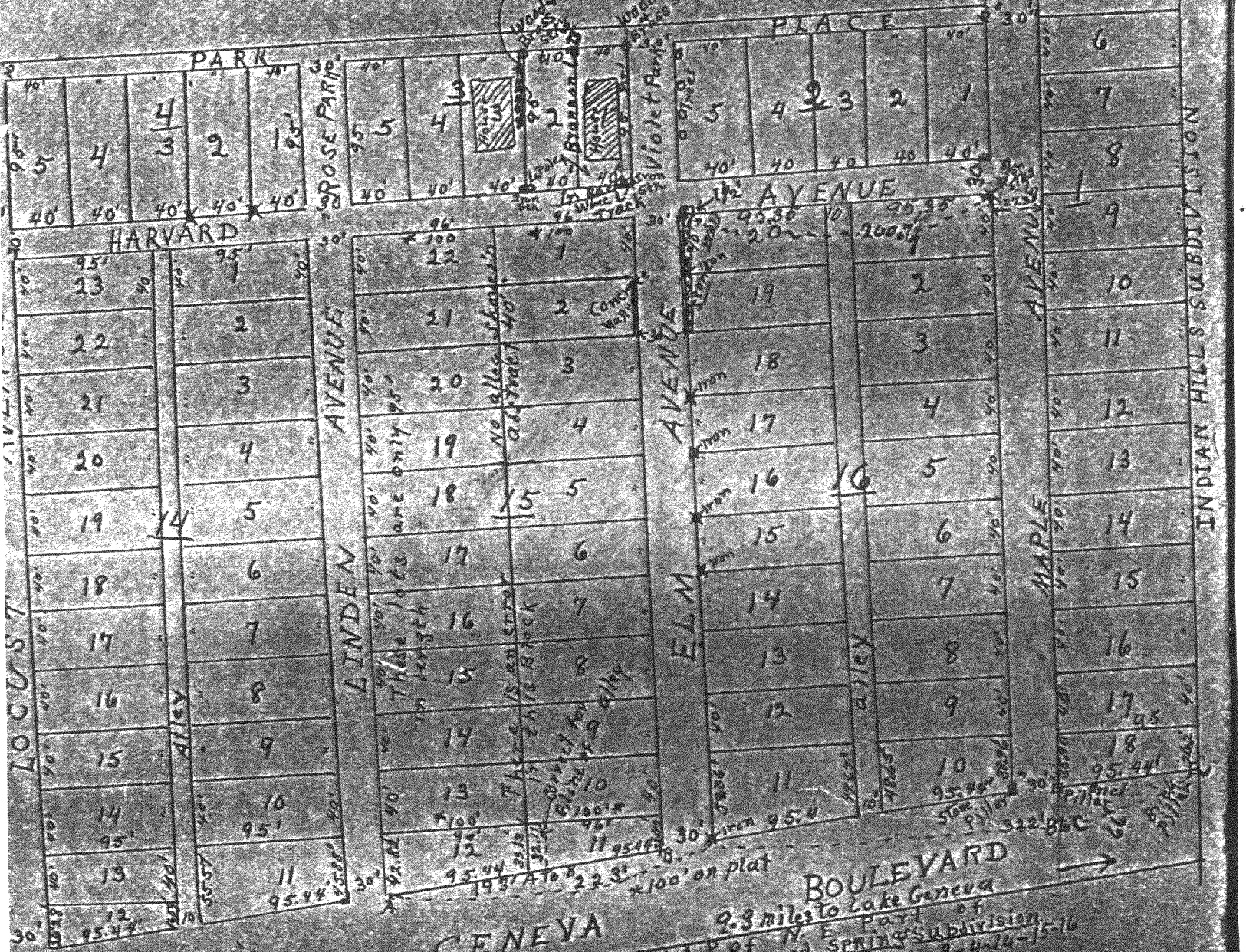
Found original iron stks at  
N.E. Cor. Lot 1, Block 16.

and also iron pipe,  
Run west ~~line~~ Block 16  
& 2 to Park Place,

Checked over for corners  
of 1 & 2 Block 3,

and set iron stks at S.E.  
Cor. of 1 & S.W. Cor. of 2  
And Brass & Wood stks  
at N. corners

See Record in AAAA  
and Blueprint



GENEVA 2.3 miles to Lake Geneva  
 Scale 100 to 1" MAP of N.E. Part of  
 Glenwood Springs Subdivision  
 Blocks 1, 2, 3-4-14-15-16

CERTIFICATE

This is to certify that by request of W. F. Best, Lake Geneva, Wis. We have surveyed and staked Lots 1 & 2, Block 3, Glenwood Springs Subdivision, Lake Geneva, Wis., as hereon shown. Lots are 40' x W. and 95' N. & S. surveyed as one lot. No house is over the line but a few pieces of shrubbery are partly over the West line. Iron stks are set at S corners and brass staks at N corners of this 2 lots. STK. at S.W. cor. lot 2, Block 3 at W. side Elm pole. 3 the marked X were found and used in this survey.

J. G. Skeels, Reg. C. E.  
 Bessie M. Palmer, ASST.  
 Lake Geneva, Wis.

Sept. 19 4 20, 1933.

Geneva, Wis. 14) Block 3

5-106 sh ✓