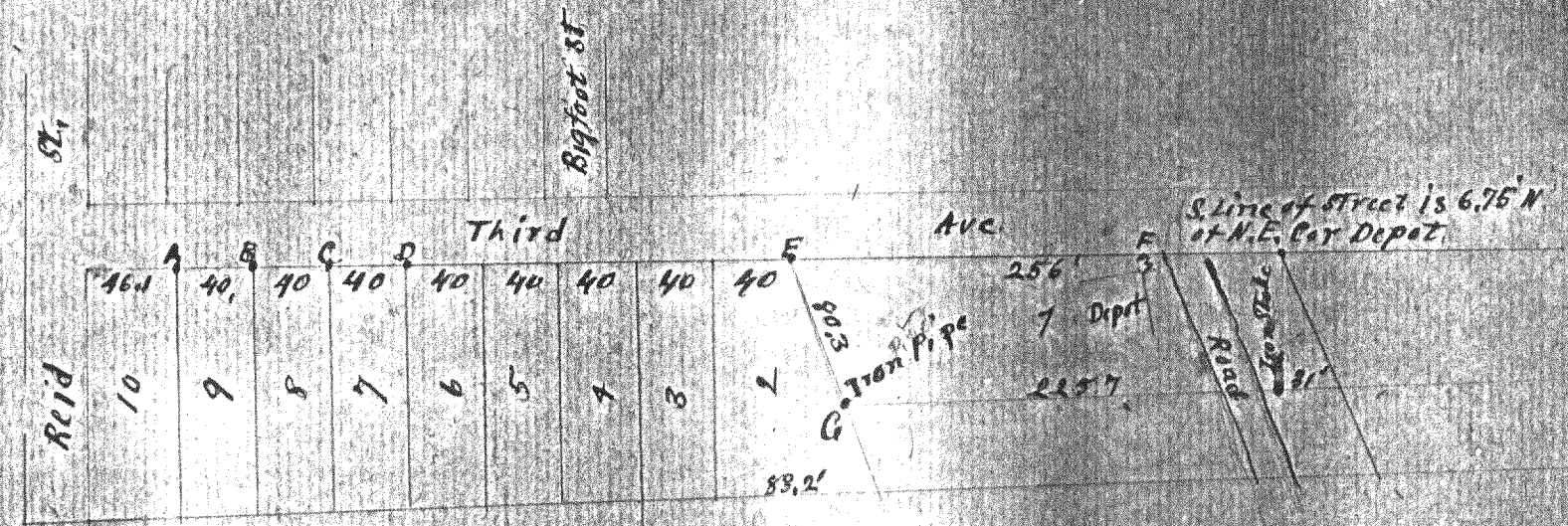


Sta. 1-10 REID & PA. RAILS ALL TO RAILROAD PARK



Remarks. At lot corners A, B & C evidence of stakes were found
 At " " D remains of stake found
 At " " E nothing found. Established same by point
 of intersection of lines A, D a line 200' E of D and
 80.3' from iron pipe at corner G.
 Point F on S. line of street established by extending line
 through corners A, B, C & D and point E on a right line.
 Surveyed July 11 '07

N. E. Haskins
 Surveyor

5-106-H