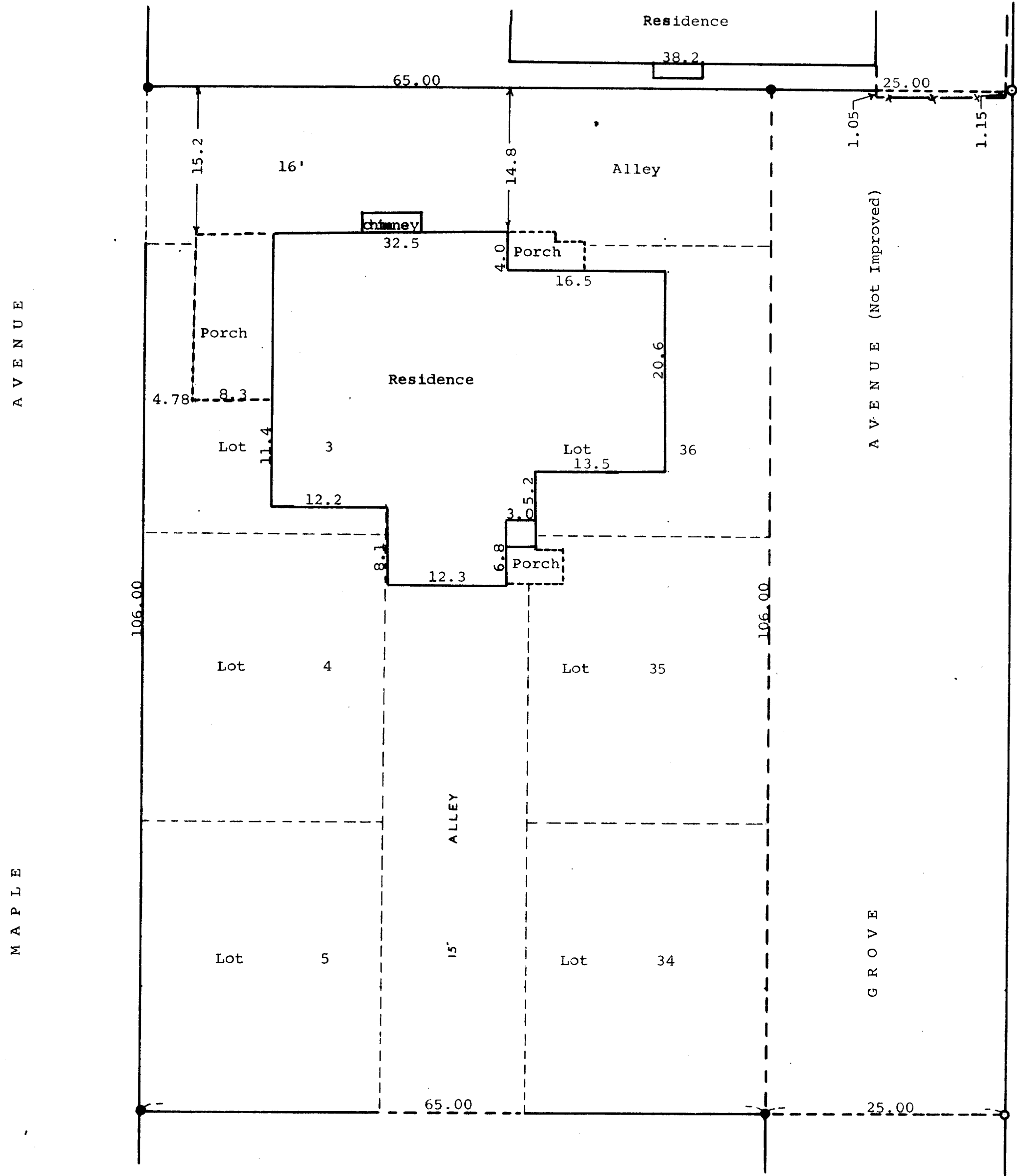


GEORGE T. DUNHAM
SURVEYING & SUBDIVIDING
DELAVAN, WISCONSIN



Scale - 1" = 20'
 ○ = Iron Pipe
 ● = Concrete Monument



Plat of survey of Lots 3, 4, 5, 34, 35, 36, in the Addition to Glenwood Springs located in the Village of Fontana on Geneva Lake, Walworth County, Wisconsin.
 January 8, 1965

George T. Dunham
 George T. Dunham, Surveyor