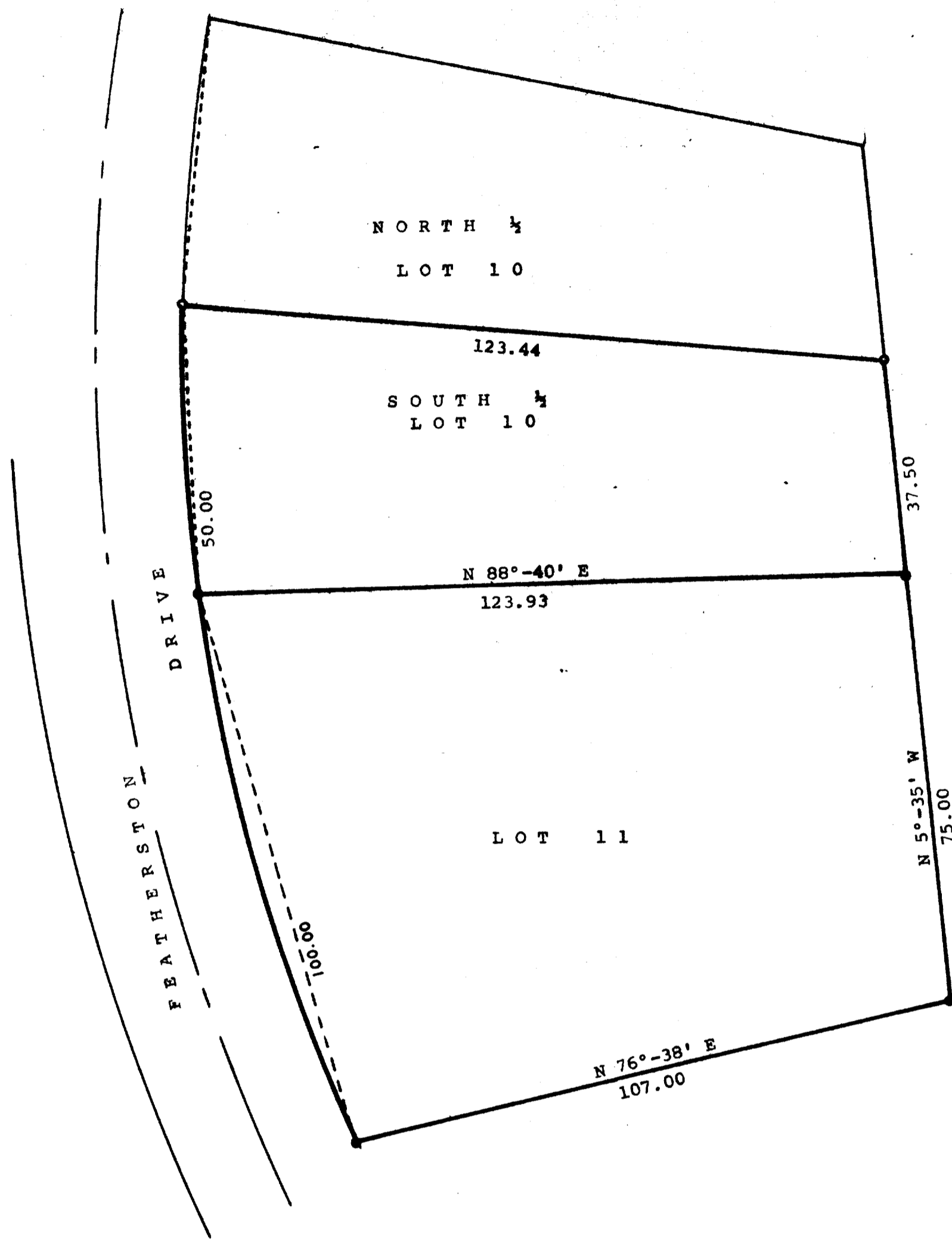


GEORGE T. DUNHAM
 SURVEYOR & ENGINEER
 DELAVAN, WISCONSIN



Scale - 1" = 20'
 ● = Concrete Monument
 ○ = Iron Pipe

Plat of survey of Lot 11 and the south 1/2 of Lot 10, Addition "A" to the Country Club Estates located in the Village of Fontana, Walworth County, Wisconsin.
 April 23, 1973

George T. Dunham
 George T. Dunham, Surveyor

