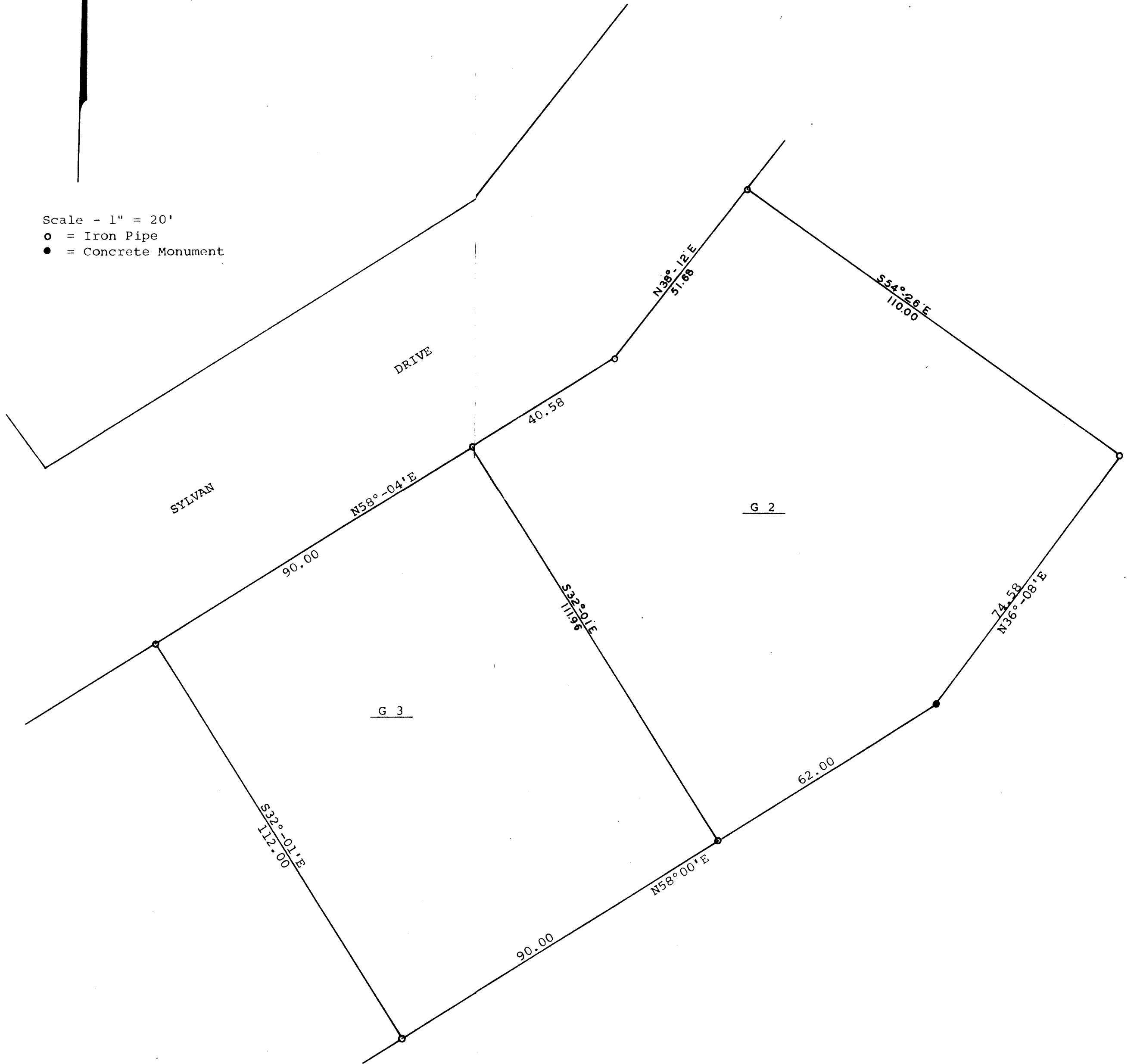


GEORGE T. DUNHAM  
 SURVEYING & SUBDIVIDING  
 DELAVAN, WISCONSIN

N



Scale - 1" = 20'  
 ○ = Iron Pipe  
 ● = Concrete Monument



Plat of survey of Lots G 2 and G 3 in Addition G  
 to Country Club Estates, Village of Fontana, Walworth  
 County, Wisconsin.  
 August 12, 1971

*George T. Dunham*  
 George T. Dunham, Surveyor

