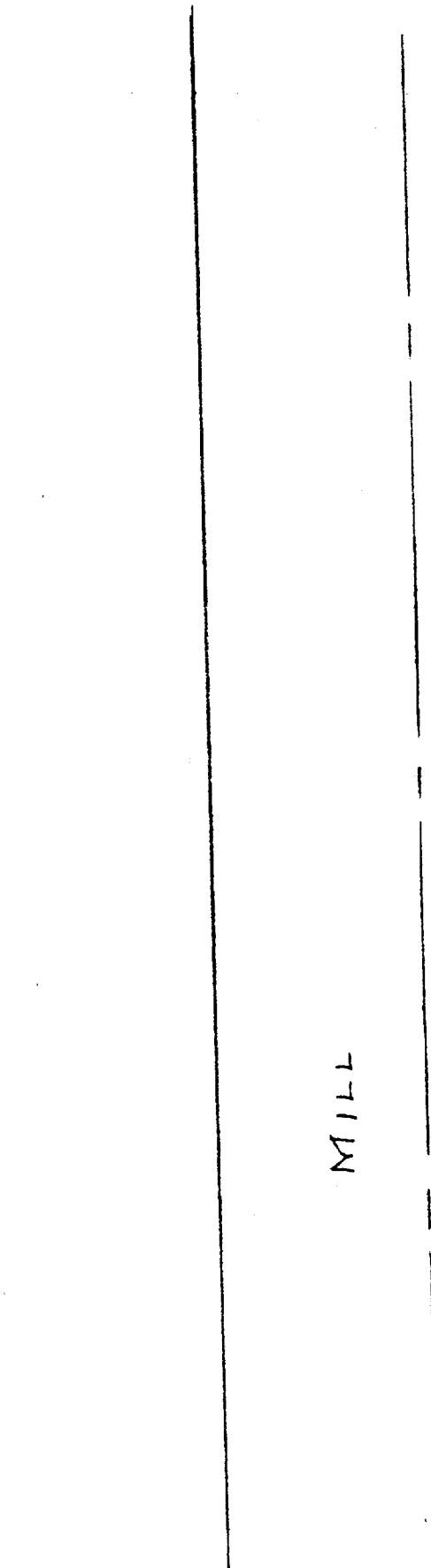


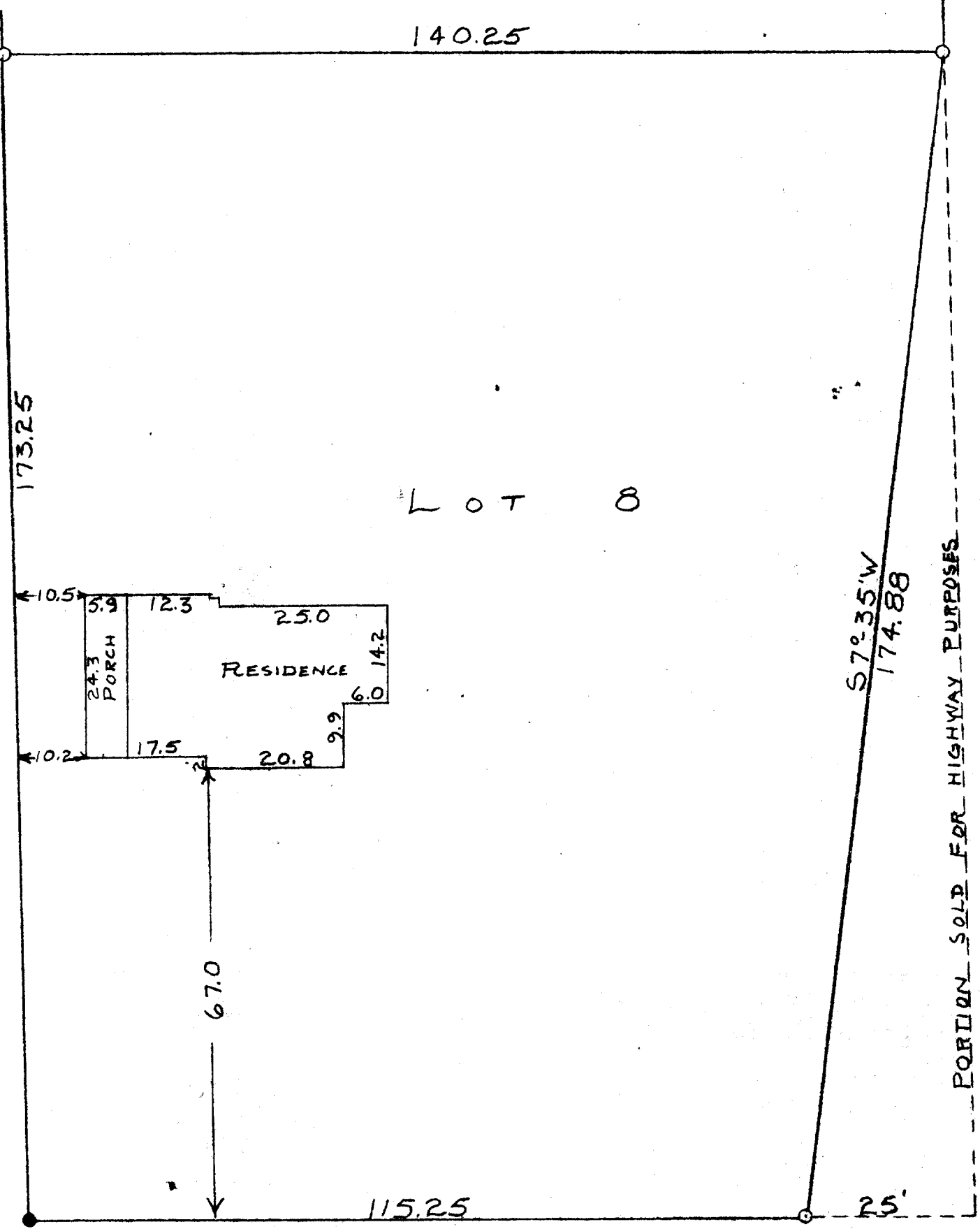
N



SCALE-1"=20'
O=IRON PIPE
●=CONC. MONU

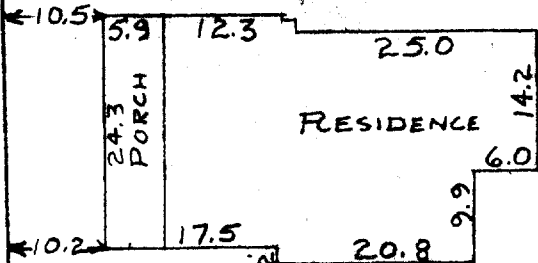


STREET



LOT 8

67.0



PORTION SOLD FOR HIGHWAY PURPOSES

STATE TRUNK HIGHWAY No. 36

DEWEY

AVENUE

PLAT OF SURVEY OF LOT 8, BLOCK 3, C.L. DOUGLAS SUBDIVISION, PART OF ASSESSOR'S PLAT NO. 1, VILLAGE OF FONTANA, WALWORTH COUNTY, WISCONSIN OCT. 14, 1958

George T. Dunham
GEORGE T. DUNHAM, SURVEYOR
DELAVER, WISCONSIN

STFV-209

5-19