

GEORGE T. DUNHAM
SURVEYING & SUBDIVIDING
DELAVAN, WISCONSIN

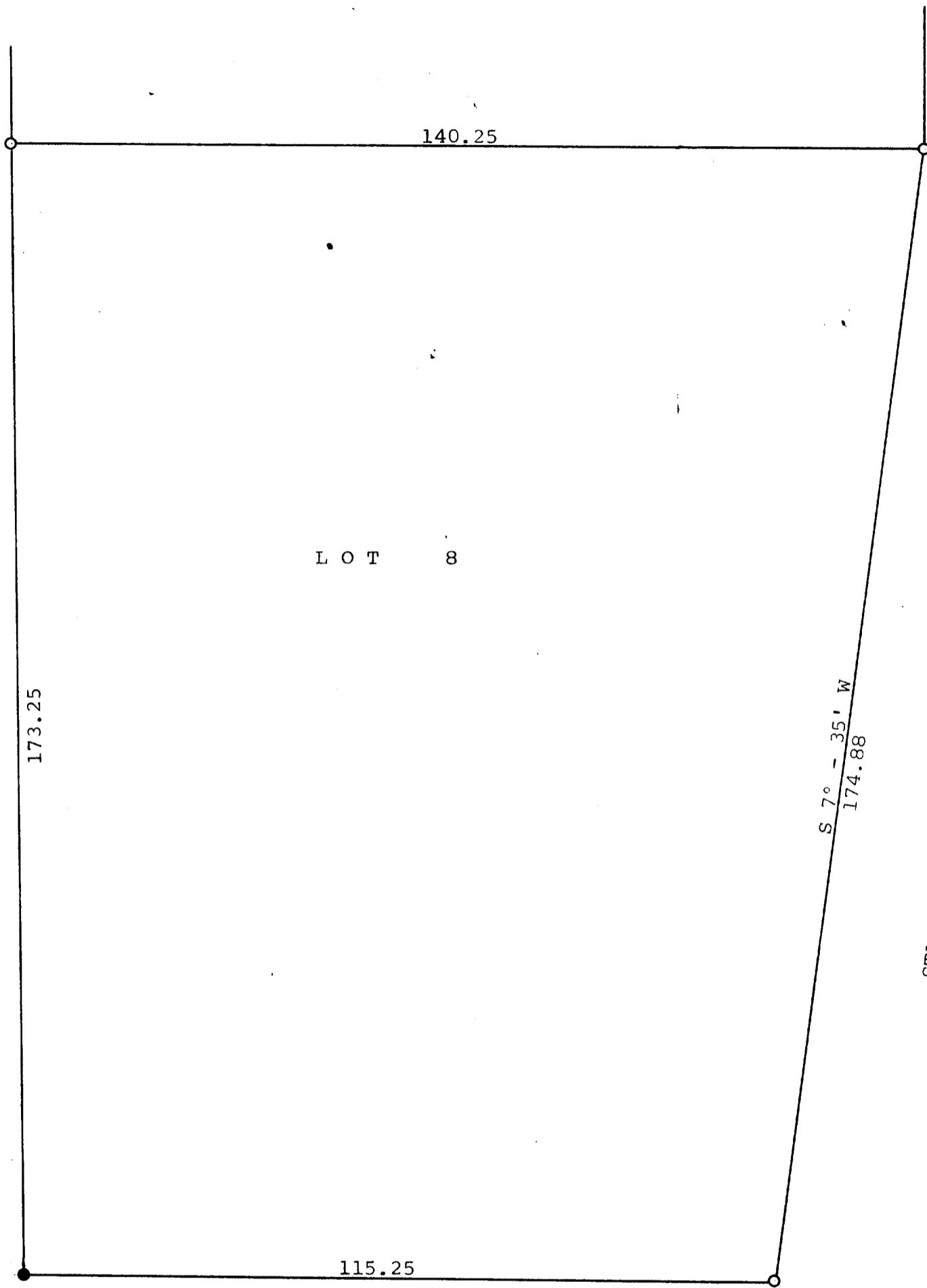
N



Scale - 1" = 20'
○ = Iron Pipe
● = Concrete Monument

STREET

MILL



STATE TRUNK HIGHWAY NO. 36

DEWEY

AVENUE

Plat of survey of Lot 8, Block 3, C. L. Douglas Subdivision, Part of
Assessor's Plat No. 1, Village of Fontana, Walworth County, Wisconsin.
August 21, 1969

George T. Dunham
George T. Dunham, Surveyor

5-122

STFV-203