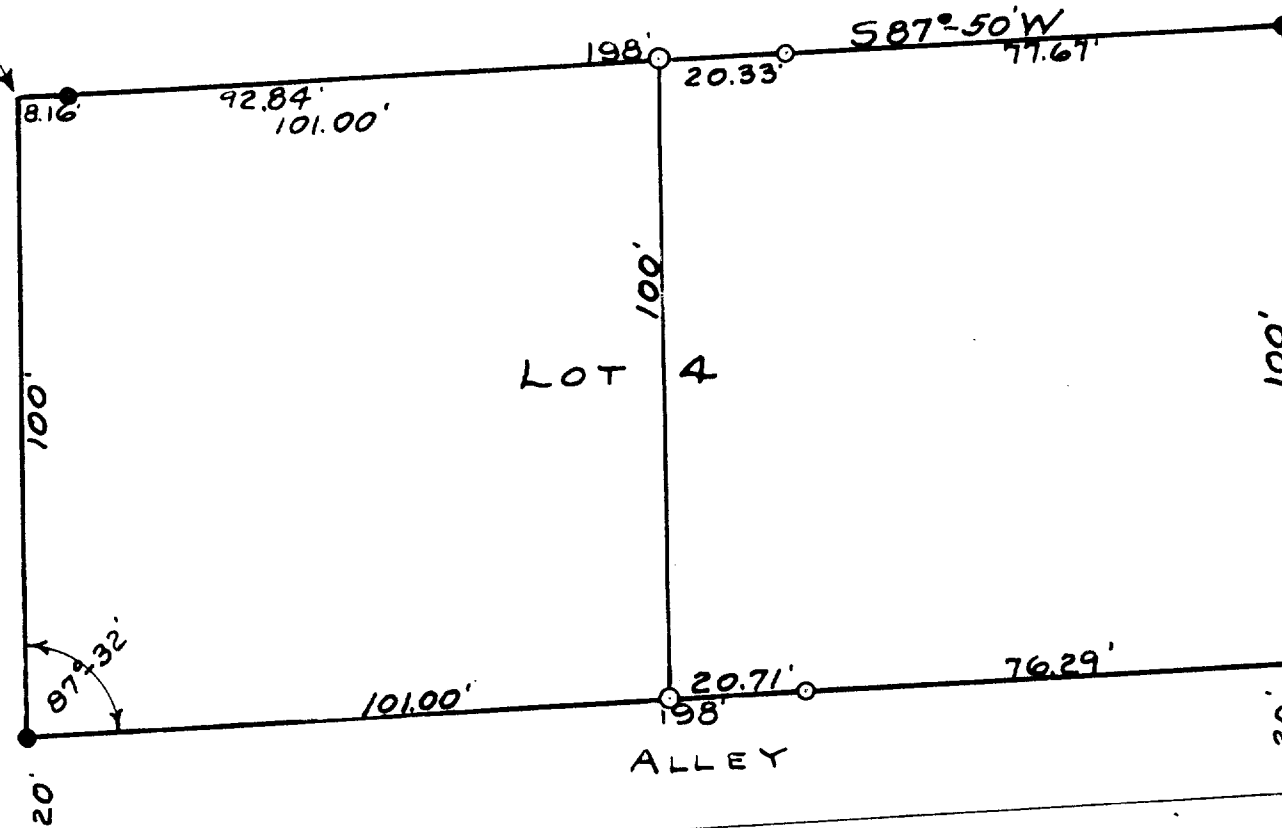


SPENCER STREET 66 FEET WIDE

SPIKE IN ROOT OF TREE AT CORNER



SCALE 1"=30'
 O-IRON PIPE
 ●-CONC. MONU.

WALWORTH STREET

PLAT OF SURVEY OF LOT 4 OF ORICIA
 OGDEN'S ADDITION TO THE CITY OF ELKHORN,
 WALWORTH COUNTY WISCONSIN.

Floyd Jensen
 COUNTY SURVEYOR

AUGUST 1945
 REVISED-DECEMBER 1959