

BENCH MARK
ELEVATIONS ARE REFERENCED TO NAVD 88 DATUM.

BENCHMARK #1
ARROW NUT ON HYDRANT, LOCATED IN THE SOUTHEAST CORNER OF FAIR AVENUE AND NORTH JACKSON STREET. ELEVATION = 1027.31

BENCHMARK #2
SPIKE IN POWER POLE, LOCATED ON THE SOUTH SIDE OF FAIR AVENUE AND BEING APPROXIMATELY 275 FEET EAST OF NORTH JACKSON STREET. ELEVATION = 1027.86

BENCHMARK #3
SOUTH FLANGE BOLT ON HYDRANT, BEING APPROXIMATELY 20 FEET EAST OF THE NORTHEAST CORNER OF THE JACKSON ELEMENTARY SCHOOL BUILDING. ELEVATION = 1026.88

UNDERGROUND UTILITIES

THESE RECORD DRAWINGS HAVE BEEN PREPARED, IN PART, ON THE BASIS OF INFORMATION COMPILED AND FURNISHED BY OTHERS. THE SURVEYOR AND ARCHITECT WILL NOT BE RESPONSIBLE FOR ANY ERRORS OR OMISSIONS WHICH HAVE BEEN INCORPORATED INTO THIS DOCUMENT AS A RESULT.

SOME UTILITIES HAVE BEEN LOCATED BY MAPS PROVIDED BY OTHERS - LOCATIONS ARE APPROXIMATE. PRIVATE UTILITIES MAY EXIST BUT ARE NOT SHOWN ON MAP. CONTACT DIGGERS HOTLINE FOR LOCATIONS.

FIELD VERIFY SANITARY AND STORM SEWER PIPE SIZE AND LOCATION.

UNDERGROUND UTILITIES SHOWN ON THIS MAP ARE BASED IN PART ON MARKINGS BY DIGGERS HOTLINE. (TICKET #20152509474)

W 1/4 CORNER SEC 31-3-17
2640.21' - SW 1/4 - 1391.91'
WESTLINE - SW 1/4 - 1248.30'
N 00°54'16" W
SW CORNER SEC 31-3-17

DESCRIPTION

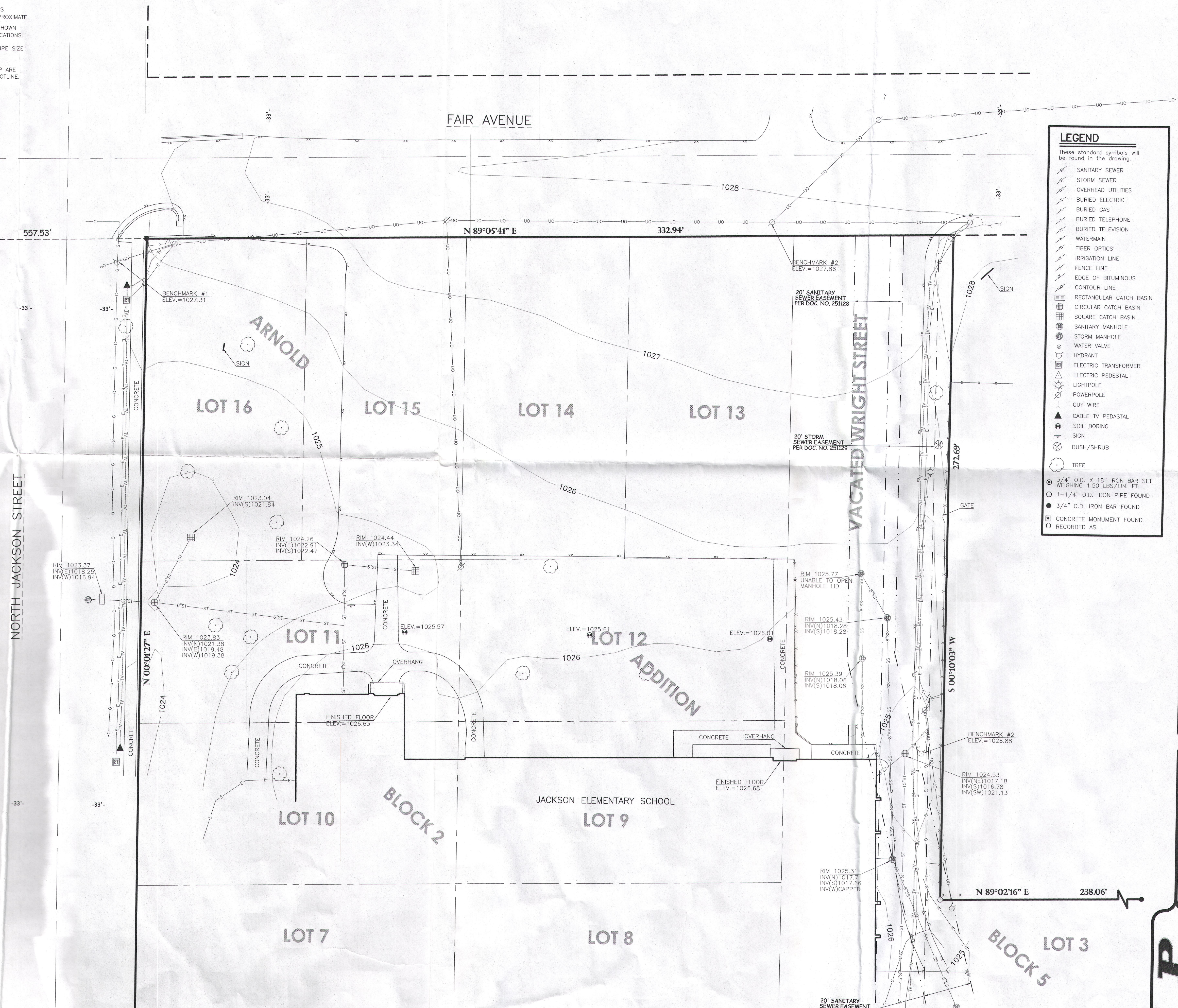
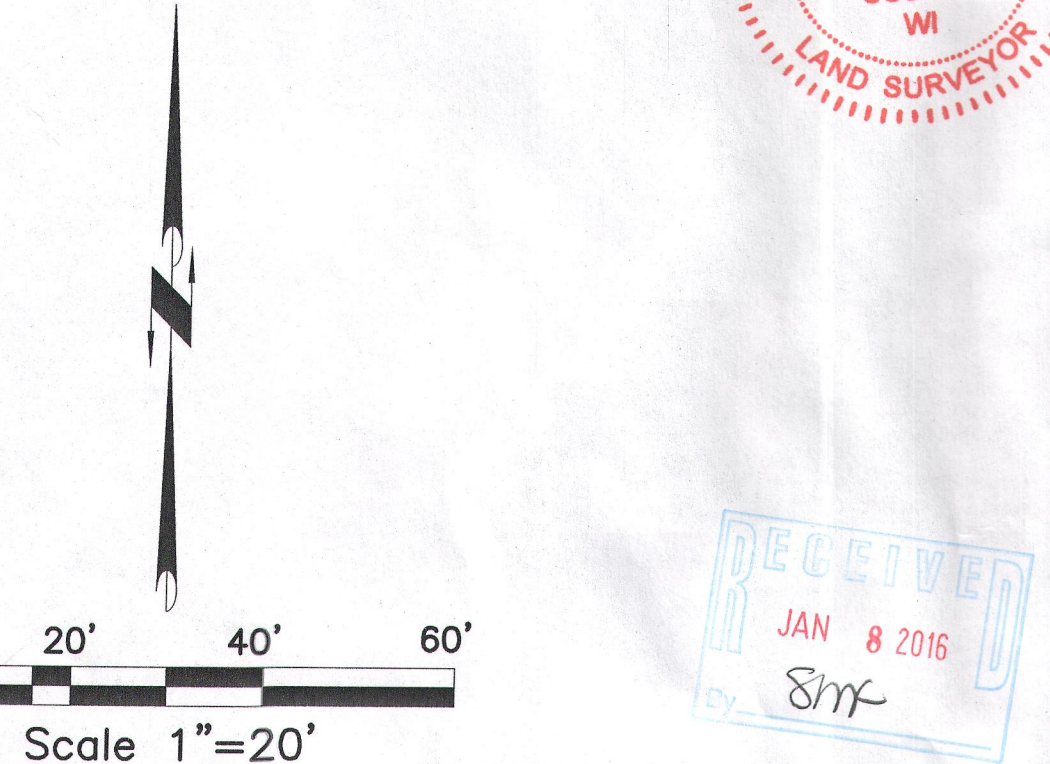
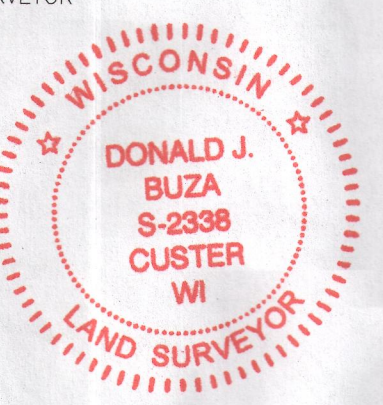
LOCATED IN BLOCK 2 OF ARNOLD ADDITION AND VACATED WRIGHT STREET, BEING LOCATED IN THE SOUTHWEST 1/4 OF THE SOUTHWEST 1/4 OF SECTION 31, TOWNSHIP 3 NORTH, RANGE 17 EAST, CITY OF ELKHORN, WALWORTH COUNTY, WISCONSIN.

SURVEYOR'S CERTIFICATE

I, DONALD J. BUZA, PROFESSIONAL LAND SURVEYOR DO HEREBY CERTIFY THAT THIS IS A TRUE AND CORRECT COPY OF A TOPOGRAPHICAL SURVEY AS DONE UNDER MY DIRECTION ON JUNE 22-23, 2015.

DATED THIS 10th DAY OF SEPTEMBER, 2015

DONALD J. BUZA (W 2338)
PROFESSIONAL LAND SURVEYOR



- LEGEND**
- These standard symbols will be found in the drawing.
- SANITARY SEWER
 - STORM SEWER
 - OVERHEAD UTILITIES
 - BURIED ELECTRIC
 - BURIED GAS
 - BURIED TELEPHONE
 - BURIED TELEVISION
 - WATERMAIN
 - FIBER OPTICS
 - IRRIGATION LINE
 - FENCE LINE
 - EDGE OF BITUMINOUS
 - CONTOUR LINE
 - RECTANGULAR CATCH BASIN
 - CIRCULAR CATCH BASIN
 - SQUARE CATCH BASIN
 - SANITARY MANHOLE
 - STORM MANHOLE
 - WATER VALVE
 - HYDRANT
 - ELECTRIC TRANSFORMER
 - ELECTRIC PEDESTAL
 - LIGHTPOLE
 - POWERPOLE
 - GUY WIRE
 - CABLE TV PEDESTAL
 - SOIL BORING
 - SIGN
 - BUSH/SHRUB
 - TREE
 - 3/4" O.D. X 18" IRON BAR SET WEIGHING 1.50 LBS/LIN. FT.
 - 1-1/4" O.D. IRON PIPE FOUND
 - 3/4" O.D. IRON BAR FOUND
 - CONCRETE MONUMENT FOUND
 - RECORDED AS

REVISIONS

T.P.	9-10-1
CHECKED: DONALD J. BUZA	
DRAWN: TRAVIS	
DATE: 7-3-15	
PROJECT NO.: 15.468	

TOPOGRAPHIC MAP

**ELKHORN AREA SCHOOL DISTRICT
JACKSON ELEMENTARY SCHOOL
CITY OF ELKHORN**

Civil Engineering
Land Surveying
Landscape Architecture

5709 Windy Drive, Suite D
Stevens Point, WI 54481

FOR