

ABERNATHY and ASSOCIATES
Kenneth B. Abernathy Jr.

Wisconsin Registered Land Surveyor S-1594

PLAT OF SURVEY

WETLAND DELINEATION FOR JACKSON CREEK

LOCATED IN THE SOUTHEAST 1/4 OF SECTION 7
TOWN 2 NORTH, RANGE 17 EAST, CITY OF
ELKHORN, WALWORTH COUNTY, WISCONSIN.

OWNERS: EUGENE AND RUSSELL BOGER
N4229 COUNTY ROAD "H"
ELKHORN, WI. 53121

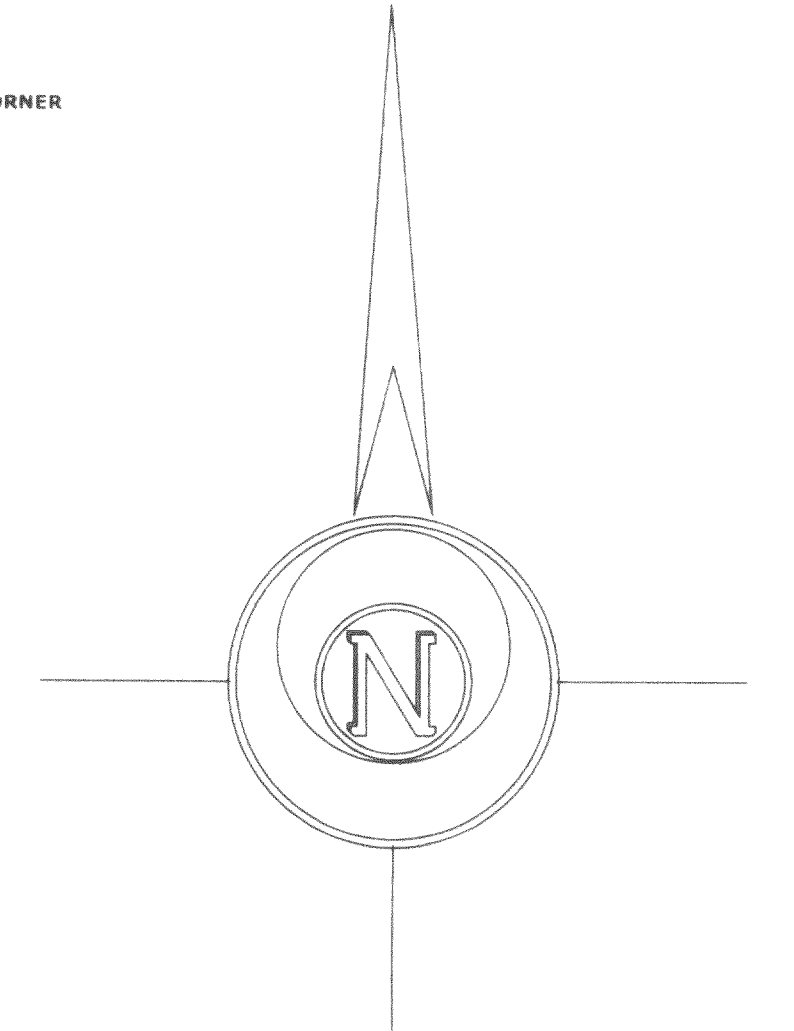
W4056 BRAY RD.
ELKHORN, WI. 53121
PHONE: (262) 723-4260 (OFFICE)
(262) 723-7209 (FAX)
Email: abernathy@elknet.net

LEGAL DESCRIPTION FOR JACKSON CREEK WETLANDS

A wetlands area located in the Southeast 1/4 of Section 7, Town 2 North, Range 17 East, City of Elkhorn, Walworth County, Wisconsin, described as follows: Commence at the Southeast corner of said Section 7; THENCE North 1°28'36" West along the east line of said section, 108.80 feet to the point of beginning;

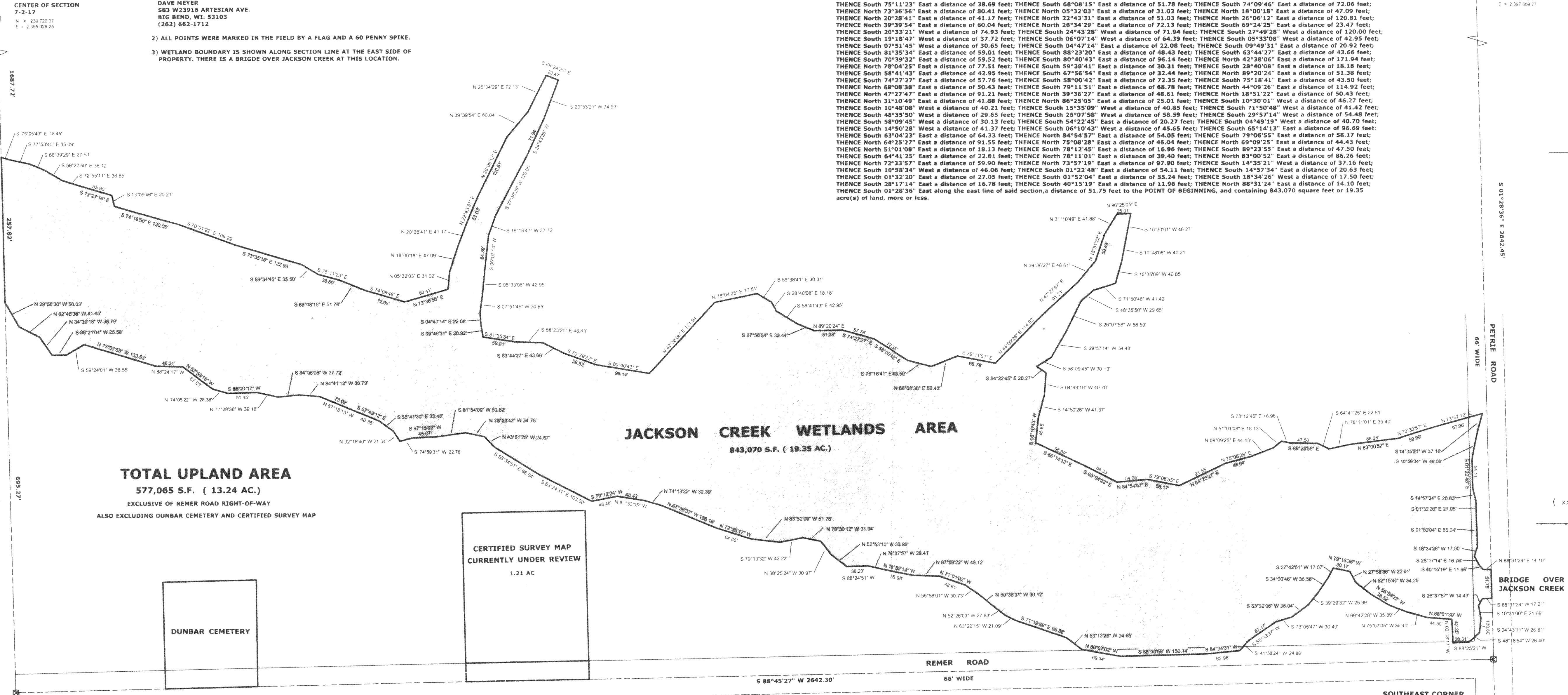
THENCE South 88°31'24" West a distance of 17.21 feet; THENCE South 26°33'57" West a distance of 14.43 feet; THENCE South 10°31'00" East a distance of 21.66 feet; THENCE South 04°43'11" West a distance of 26.61 feet; THENCE South 48°18'54" West a distance of 26.40 feet; THENCE South 88°25'21" West a distance of 28.31 feet; THENCE North 02°18'17" West a distance of 42.20 feet; THENCE North 86°01'30" West a distance of 44.50 feet; THENCE North 75°07'05" West a distance of 36.40 feet; THENCE North 68°42'28" West a distance of 35.39 feet; THENCE North 58°58'22" West a distance of 38.52 feet; THENCE North 52°15'40" West a distance of 34.25 feet; THENCE North 27°58'36" West a distance of 22.61 feet; THENCE North 79°15'38" West a distance of 30.17 feet; THENCE South 27°42'51" West a distance of 17.07 feet; THENCE South 34°00'46" West a distance of 36.56 feet; THENCE South 39°29'32" West a distance of 23.99 feet; THENCE South 53°32'06" West a distance of 36.04 feet; THENCE South 73°05'47" West a distance of 30.40 feet; THENCE South 55°33'37" West a distance of 57.17 feet; THENCE South 41°58'25" West a distance of 24.88 feet; THENCE South 84°34'31" West a distance of 62.96 feet; THENCE South 88°30'59" West a distance of 150.14 feet; THENCE North 80°07'02" West a distance of 69.34 feet; THENCE North 53°13'28" West a distance of 34.85 feet; THENCE North 71°19'59" West a distance of 95.86 feet; THENCE North 63°22'15" West a distance of 21.09 feet; THENCE North 52°26'03" West a distance of 27.83 feet; THENCE North 50°38'31" West a distance of 30.12 feet; THENCE North 55°58'01" West a distance of 30.73 feet; THENCE North 71°01'02" West a distance of 48.61 feet; THENCE North 87°59'22" West a distance of 48.12 feet; THENCE North 78°52'14" West a distance of 55.98 feet; THENCE North 76°37'57" West a distance of 26.41 feet; THENCE South 88°24'51" West a distance of 30.23 feet; THENCE North 52°53'10" West a distance of 33.82 feet; THENCE North 58°25'24" West a distance of 30.97 feet; THENCE North 78°30'12" West a distance of 31.94 feet; THENCE South 79°13'32" West a distance of 42.23 feet; THENCE North 83°52'09" West a distance of 51.78 feet; THENCE North 72°25'17" West a distance of 64.85 feet; THENCE North 67°38'37" West a distance of 106.16 feet; THENCE North 74°13'22" West a distance of 32.39 feet; THENCE North 32°18'40" West a distance of 21.34 feet; THENCE North 59°41'30" West a distance of 33.48 feet; THENCE North 63°24'31" West a distance of 103.00 feet; THENCE North 58°34'51" West a distance of 96.04 feet; THENCE North 43°51'25" West a distance of 24.67 feet; THENCE North 78°23'42" West a distance of 34.75 feet; THENCE South 81°54'00" West a distance of 50.62 feet; THENCE South 87°15'03" West a distance of 45.07 feet; THENCE South 74°59'31" West a distance of 22.76 feet; THENCE North 32°18'40" West a distance of 21.34 feet; THENCE North 59°41'30" West a distance of 33.48 feet; THENCE North 67°49'12" West a distance of 40.35 feet; THENCE North 67°18'13" West a distance of 73.02 feet; THENCE North 84°41'12" West a distance of 36.79 feet; THENCE South 84°08'08" West a distance of 37.72 feet; THENCE North 77°28'36" West a distance of 39.18 feet; THENCE South 88°21'17" West a distance of 51.45 feet; THENCE North 74°05'22" West a distance of 28.38 feet; THENCE North 52°58'19" West a distance of 67.03 feet; THENCE North 88°24'17" West a distance of 48.31 feet; THENCE North 73°07'55" West a distance of 133.53 feet; THENCE South 59°24'01" West a distance of 36.55 feet; THENCE South 89°21'04" West a distance of 25.58 feet; THENCE North 34°30'18" West a distance of 38.79 feet; THENCE North 62°48'38" West a distance of 41.45 feet; THENCE North 29°58'30" West a distance of 50.03 feet; THENCE North 01°28'27" West a distance of 257.83 feet; THENCE South 78°05'40" East a distance of 18.43 feet; THENCE South 77°53'40" East a distance of 35.09 feet; THENCE South 66°39'29" East a distance of 27.53 feet; THENCE South 59°27'50" East a distance of 36.12 feet; THENCE South 72°55'11" East a distance of 36.85 feet; THENCE South 73°27'18" East a distance of 55.90 feet; THENCE South 13°09'46" East a distance of 20.21 feet; THENCE South 74°18'50" East a distance of 120.06 feet; THENCE South 70°01'22" East a distance of 106.28 feet; THENCE South 73°33'16" East a distance of 122.93 feet; THENCE South 59°34'45" East a distance of 35.50 feet; THENCE South 75°11'23" East a distance of 38.69 feet; THENCE South 68°08'15" East a distance of 51.78 feet; THENCE South 74°09'46" East a distance of 72.06 feet; THENCE North 73°36'56" East a distance of 80.41 feet; THENCE North 05°32'03" East a distance of 31.02 feet; THENCE North 18°00'18" East a distance of 47.09 feet; THENCE North 20°28'41" East a distance of 41.17 feet; THENCE North 22°43'31" East a distance of 51.03 feet; THENCE North 26°06'12" East a distance of 120.81 feet; THENCE North 39°39'54" East a distance of 60.04 feet; THENCE North 26°34'29" East a distance of 72.13 feet; THENCE South 69°24'25" East a distance of 23.47 feet; THENCE South 20°33'21" West a distance of 74.93 feet; THENCE South 24°43'28" West a distance of 71.94 feet; THENCE South 27°48'28" West a distance of 120.00 feet; THENCE South 19°18'47" West a distance of 37.72 feet; THENCE South 06°07'14" West a distance of 64.39 feet; THENCE South 05°33'08" West a distance of 43.85 feet; THENCE North 73°56'54" East a distance of 59.01 feet; THENCE South 88°23'20" East a distance of 48.43 feet; THENCE North 63°44'27" East a distance of 43.66 feet; THENCE North 70°39'32" East a distance of 59.52 feet; THENCE South 80°40'43" East a distance of 96.14 feet; THENCE North 42°38'06" East a distance of 171.94 feet; THENCE North 78°04'25" East a distance of 77.51 feet; THENCE South 59°38'41" East a distance of 30.31 feet; THENCE North 28°40'08" East a distance of 18.18 feet; THENCE South 58°41'43" East a distance of 42.95 feet; THENCE South 67°56'54" East a distance of 32.44 feet; THENCE North 89°20'24" East a distance of 51.28 feet; THENCE South 74°27'27" East a distance of 57.76 feet; THENCE South 58°00'42" East a distance of 72.35 feet; THENCE South 75°18'41" East a distance of 43.50 feet; THENCE North 68°08'39" East a distance of 50.43 feet; THENCE South 79°11'51" East a distance of 68.78 feet; THENCE North 44°09'26" East a distance of 114.92 feet; THENCE North 47°27'47" East a distance of 91.21 feet; THENCE North 39°36'37" East a distance of 48.61 feet; THENCE North 18°15'32" East a distance of 50.45 feet; THENCE North 31°10'49" East a distance of 41.88 feet; THENCE North 86°25'05" East a distance of 25.01 feet; THENCE South 10°30'01" West a distance of 46.27 feet; THENCE North 10°48'08" West a distance of 40.21 feet; THENCE South 15°35'09" West a distance of 40.85 feet; THENCE South 71°50'48" West a distance of 41.42 feet; THENCE South 48°35'50" West a distance of 29.65 feet; THENCE South 26°07'58" West a distance of 58.59 feet; THENCE South 29°57'14" West a distance of 54.48 feet; THENCE South 58°09'45" West a distance of 30.13 feet; THENCE South 54°22'45" East a distance of 20.27 feet; THENCE South 04°49'19" West a distance of 40.70 feet; THENCE South 14°50'28" West a distance of 41.37 feet; THENCE South 06°10'43" West a distance of 45.65 feet; THENCE South 65°14'13" West a distance of 96.69 feet; THENCE South 63°04'23" East a distance of 64.33 feet; THENCE North 84°54'37" East a distance of 54.05 feet; THENCE South 78°06'55" East a distance of 58.17 feet; THENCE North 64°25'27" East a distance of 91.55 feet; THENCE North 75°08'28" East a distance of 46.04 feet; THENCE North 69°09'25" East a distance of 44.43 feet; THENCE North 07°51'08" East a distance of 18.13 feet; THENCE South 78°12'45" East a distance of 16.96 feet; THENCE South 89°23'55" East a distance of 47.50 feet; THENCE South 64°45'25" East a distance of 22.81 feet; THENCE North 78°11'01" East a distance of 39.40 feet; THENCE North 83°00'52" East a distance of 86.26 feet; THENCE North 72°33'57" East a distance of 59.90 feet; THENCE North 73°57'19" East a distance of 97.90 feet; THENCE South 14°35'21" West a distance of 37.16 feet; THENCE South 10°58'34" West a distance of 46.06 feet; THENCE South 01°22'48" East a distance of 54.11 feet; THENCE South 14°57'34" West a distance of 20.63 feet; THENCE South 01°32'20" East a distance of 27.05 feet; THENCE South 01°32'04" East a distance of 55.24 feet; THENCE South 18°34'26" West a distance of 17.50 feet; THENCE South 28°17'14" West a distance of 16.78 feet; THENCE South 40°15'19" East a distance of 11.96 feet; THENCE North 88°31'24" West a distance of 14.10 feet; THENCE South 01°28'36" East along the east line of said section, a distance of 51.75 feet to the POINT OF BEGINNING, and containing 843,070 square feet or 19.35 acre(s) of land, more or less.

Horizontal Datum is based on the Wisconsin State Plane Coordinate System Grd. South Zone, all bearings are referred to Grid North.



Legend

- FOUND IRON PIPE
- FOUND IRON ROD
- FOUND BRASS CAPPED MONUMENT
- FOUND CONCRETE MONUMENT
- CHISEL CUT IN CONCRETE
- SET IRON ROD, 24" LONG, WEIGHING 1.5 LBS./LINEAL FT., 3/4" DIA.
- SET IRON ROD, 30" LONG, WEIGHING 4.5 LBS./LINEAL FT., 1-11/16" DIA.
- (xxxx) RECORDED AS DIMENSION
- EXISTING FENCE



TOTAL UPLAND AREA

577,065 S.F. (13.24 AC.)

EXCLUSIVE OF REMER ROAD RIGHT-OF-WAY

ALSO EXCLUDING DUNBAR CEMETERY AND CERTIFIED SURVEY MAP

CERTIFIED SURVEY MAP
CURRENTLY UNDER REVIEW
1.21 AC.

SOUTH 1/4 CORNER
SEC. 7-2-17
N = 237,080.13
E = 2,395,096.19

SOUTHEAST CORNER
7-2-17
N = 237,137.82
E = 2,397,797.82

SCALE: 1" = 100 FEET

"I hereby certify that the above described property has been surveyed by me or under my direction and that the above map is a true representation thereof and shows the size and location of the property, its exterior boundaries, the location of all visible structures and dimensions of all principal buildings thereon, boundary fences, apparent easements, roadways and visible encroachments, if any."
"This survey is made for the use of the present owners of the property, and also those who purchase, mortgage, or guarantee the title thereto within one year from the date hereof."

KENNETH B. ABERNATHY, JR.
WISCONSIN REGISTERED LAND SURVEYOR, S-1594

Date: SEPT. 24, 2003 Job No. 03.912

